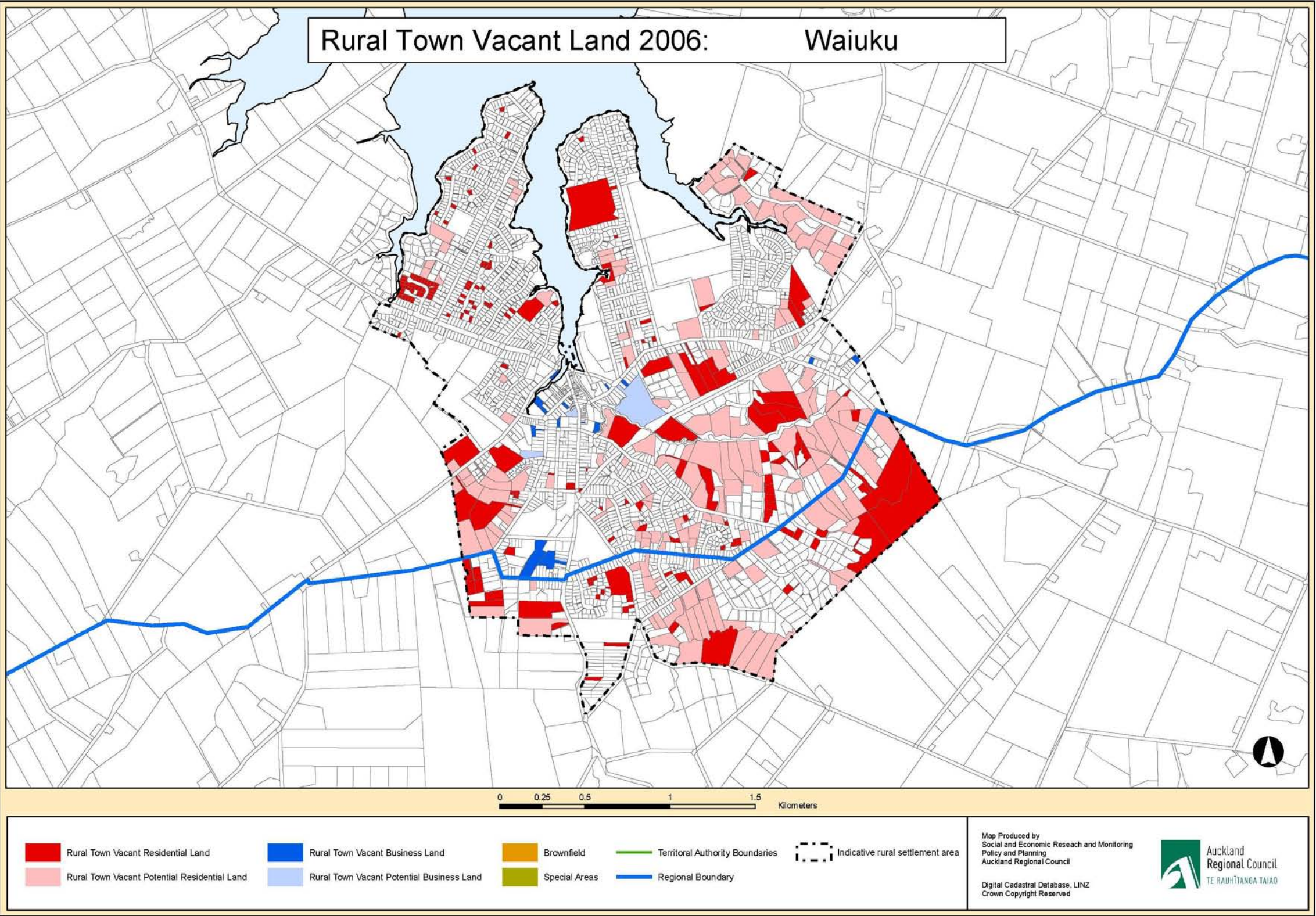


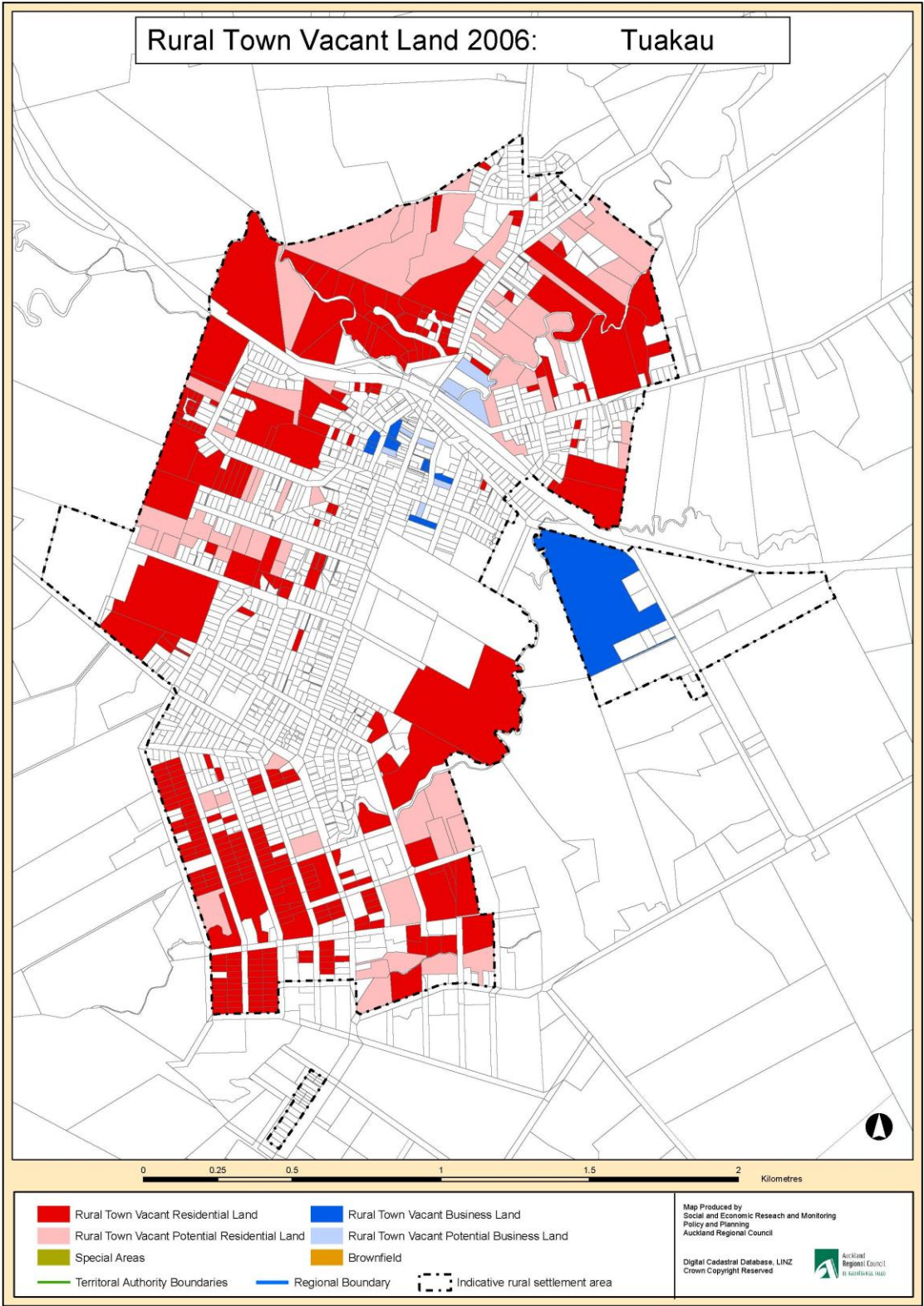
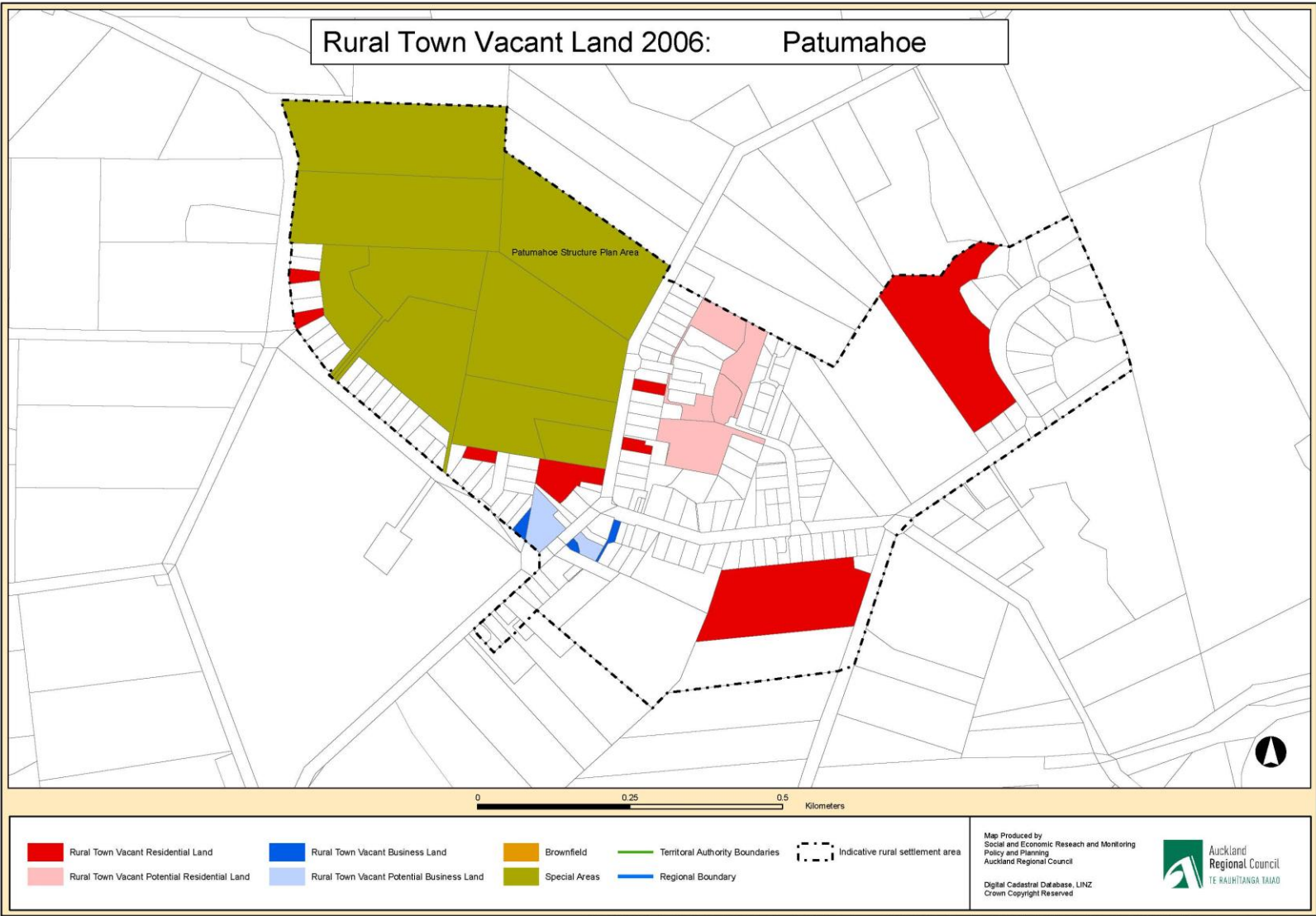
Map 46: Waiuku



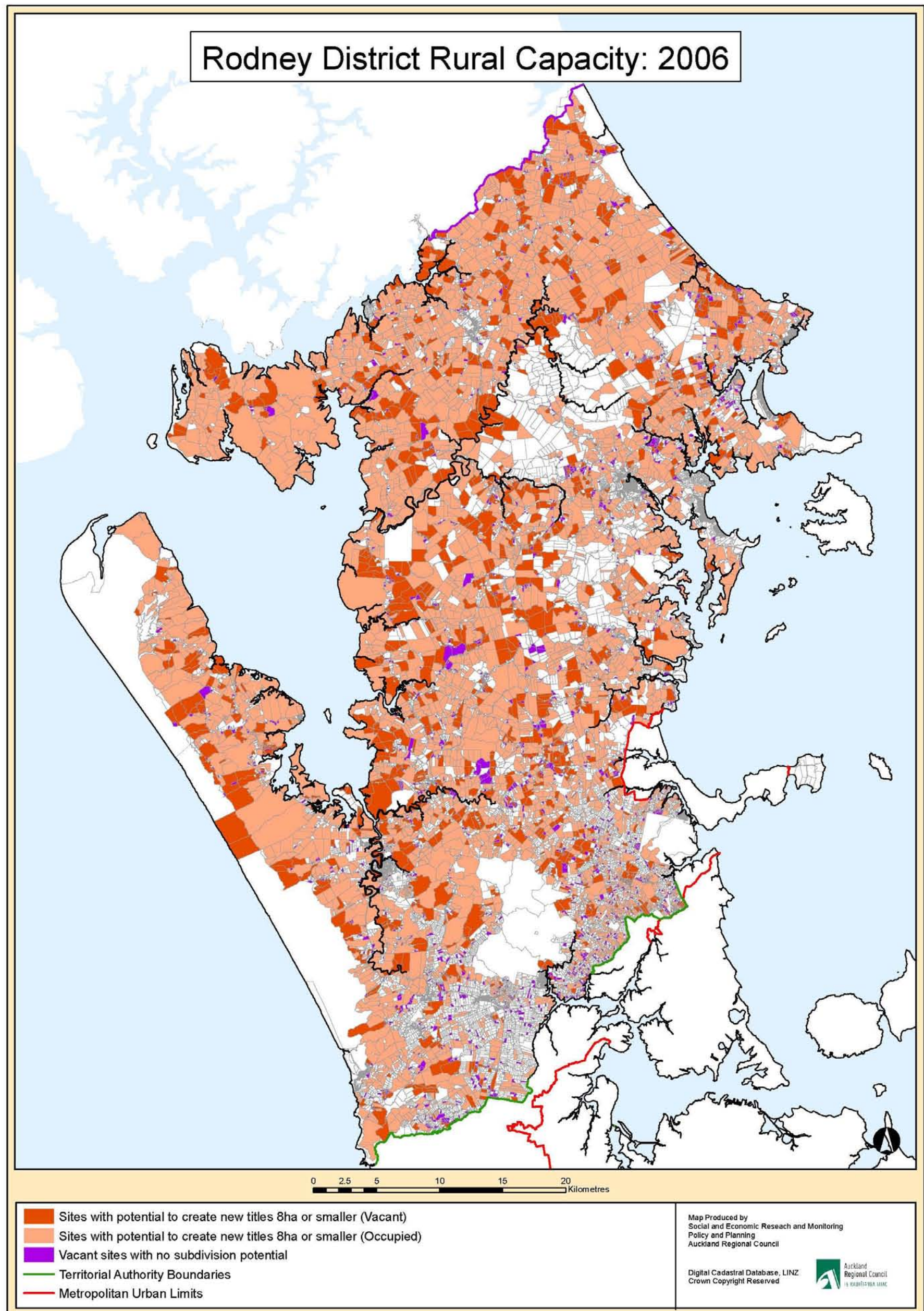
File: 28/01/2010 Craig F. J:\SECTION\PolicyPlanning\MonitoringResearch\Project\UrbanCapacities2006\MXDs\FINAL Rural Towns 20100128\Rural Town Capacity Landscape.mxd



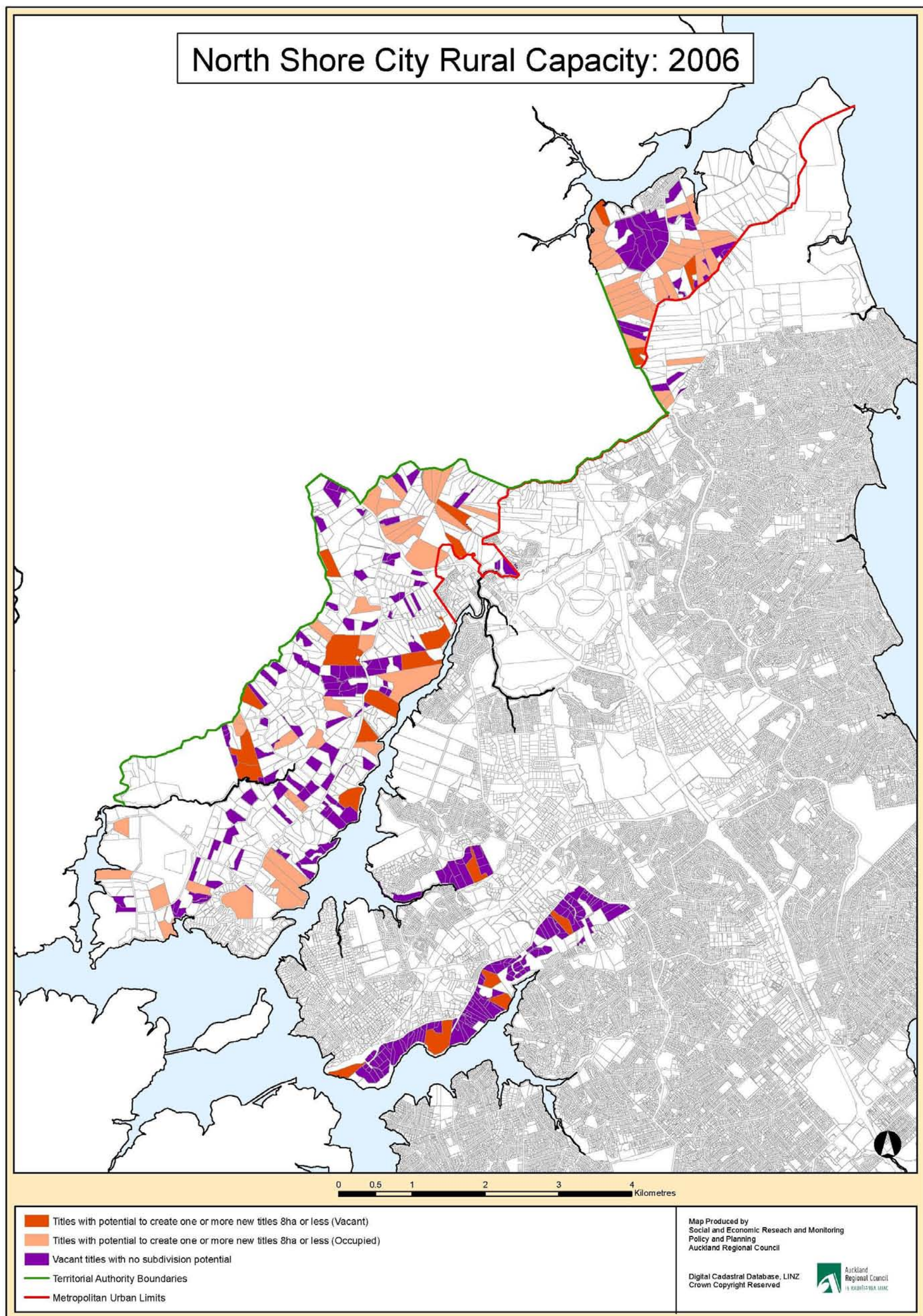
Franklin District Rural Townships and Coastal Settlements: Vacant Land 2006  
Map 47 and 48: Patumahoe and Tuaka



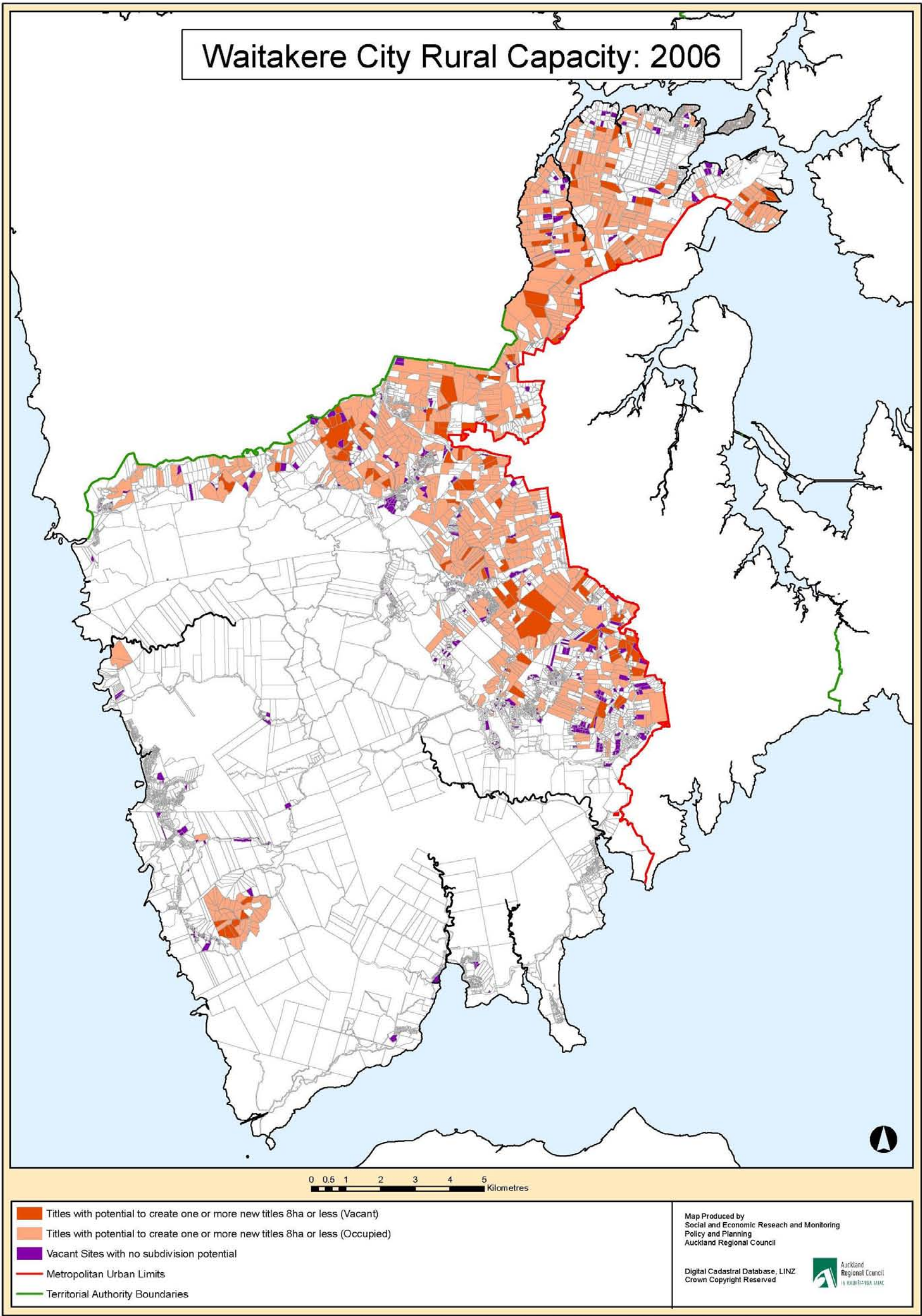






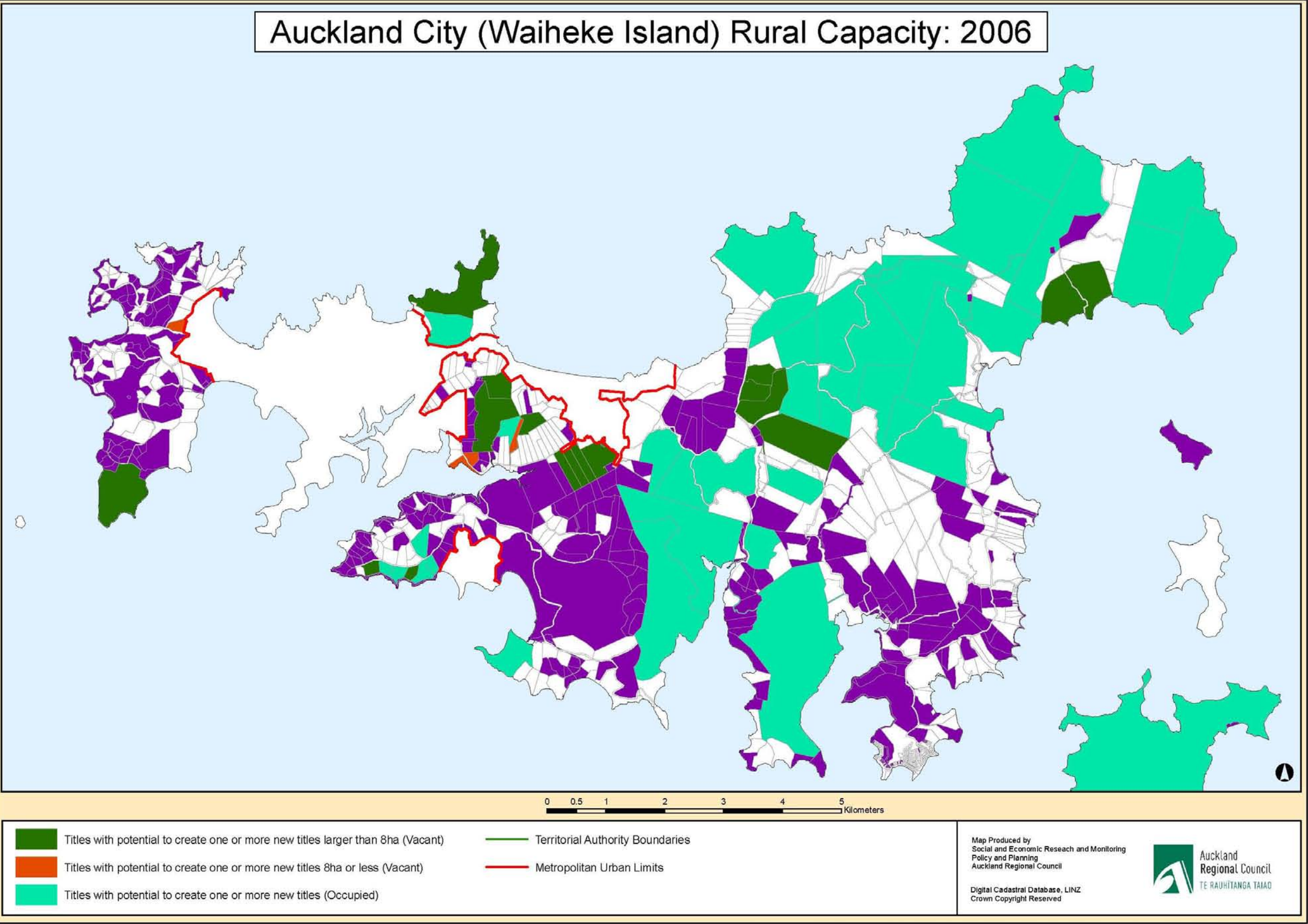






File: 09/05/2008 CraigF J:\SECTION\Policy\Planning\MonitoringResearch\Project\RuralCapacities2006\WXDs\FINAL\_Waitakere\_Rural\_Capacities\_2006.mxd

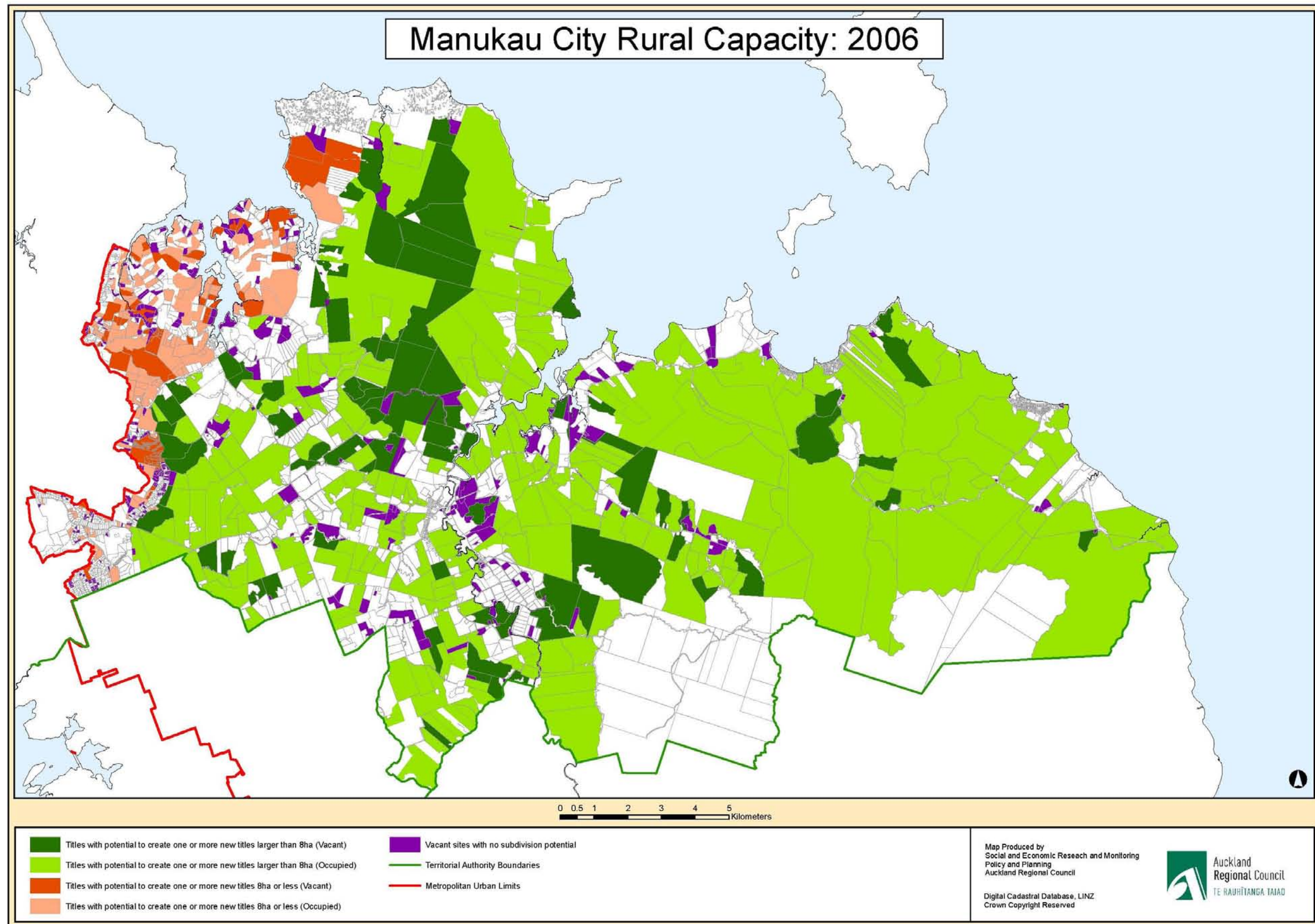




File: 20/05/08 Craig F. J:\SECTION\PolicyPlanning\MonitoringResearch\Project\RuralCapacities2006\WXS\FINAL\_Auckland\_Rural\_Capcities\_2006.mxd

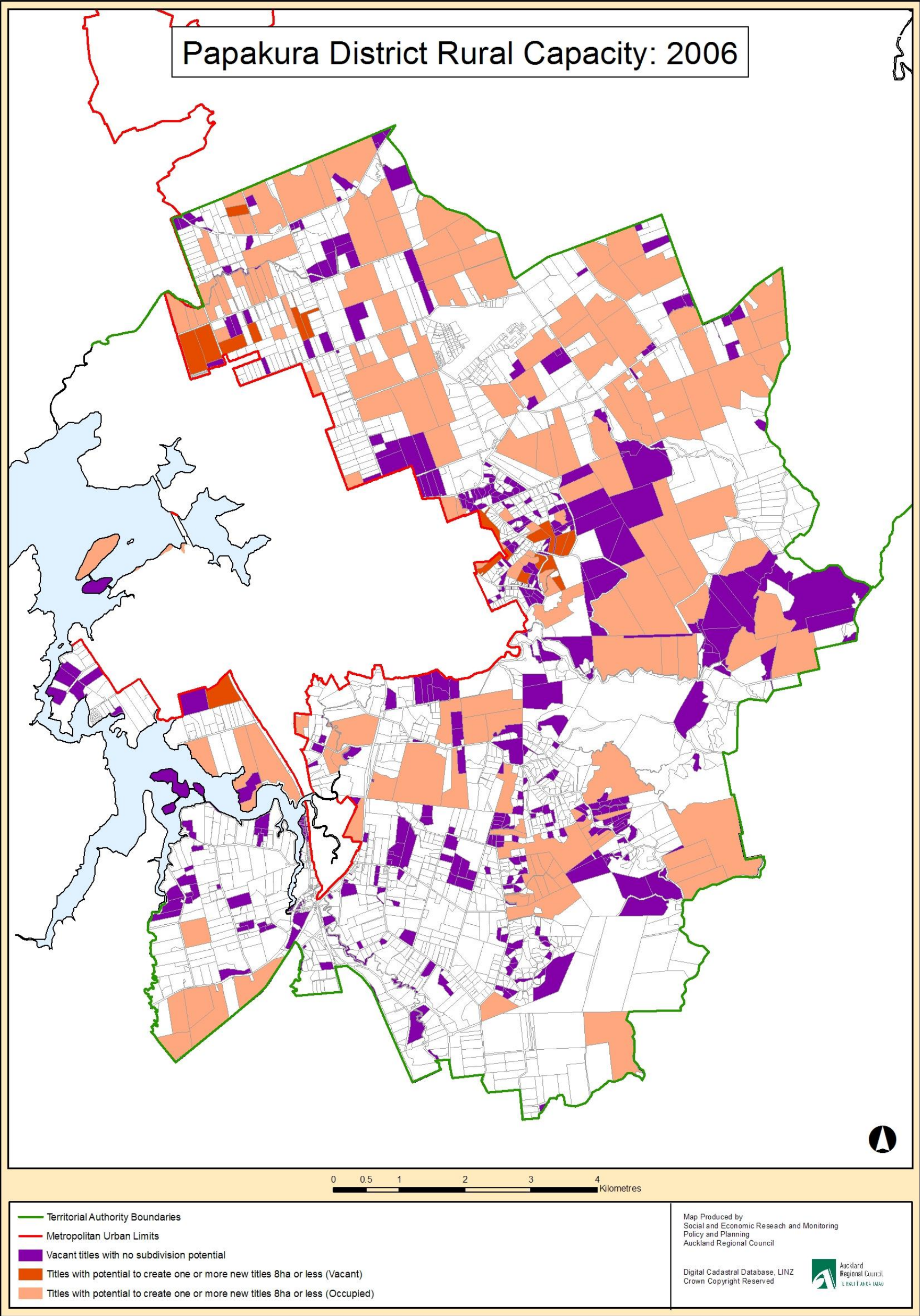


Map 53: Manukau City Rural Area Capacity: 2006





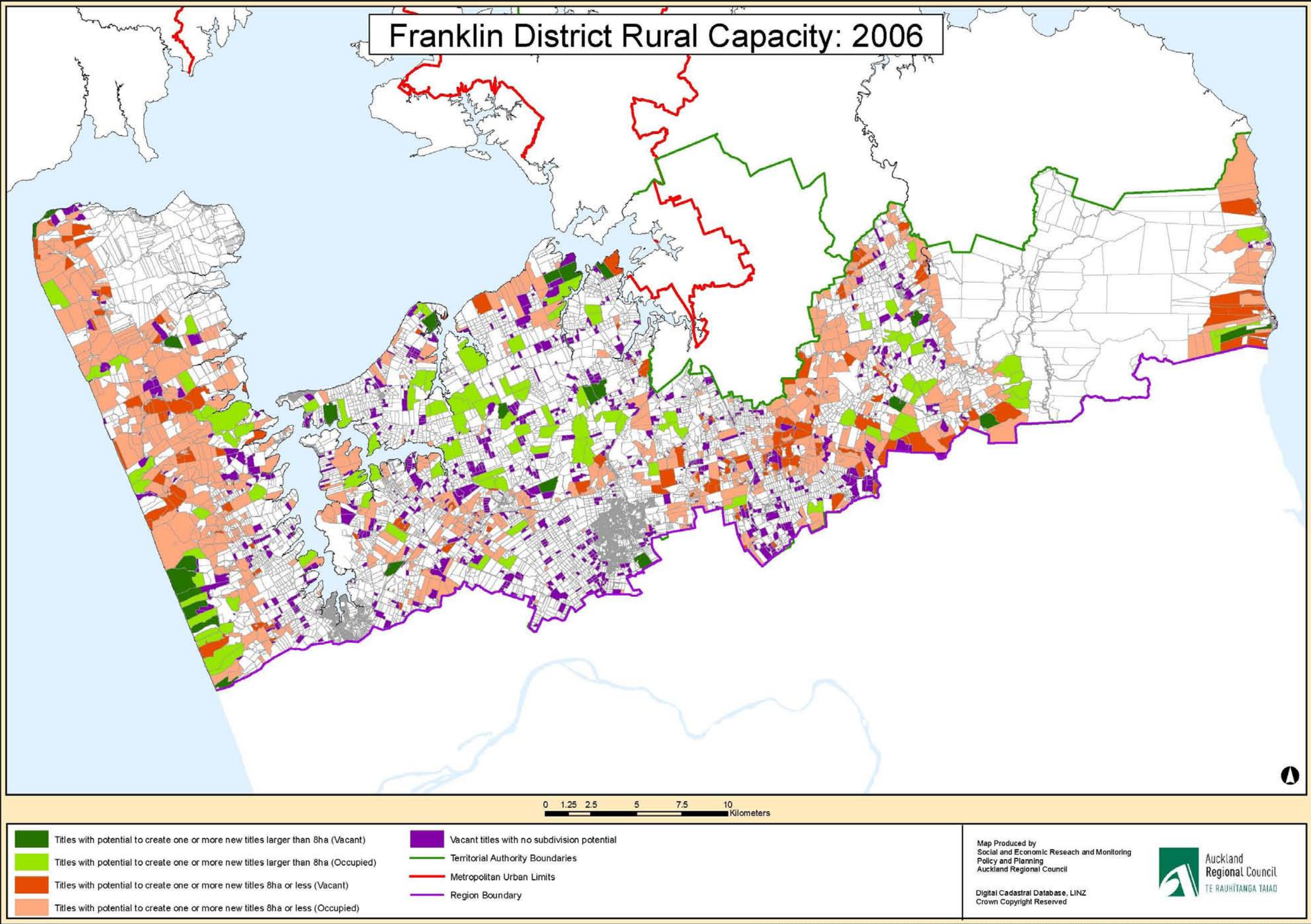
Map 54: Papakura District Rural Area Capacity: 2006



File: 10/02/2010 CraigF J:\SECTION\PolicyPlanning\MonitoringResearch\Project\RuralCapacities2006\MXD\2009 MXDS\FINAL\_Papakura\_Rural\_Capcities\_2006\_20100210.mxd



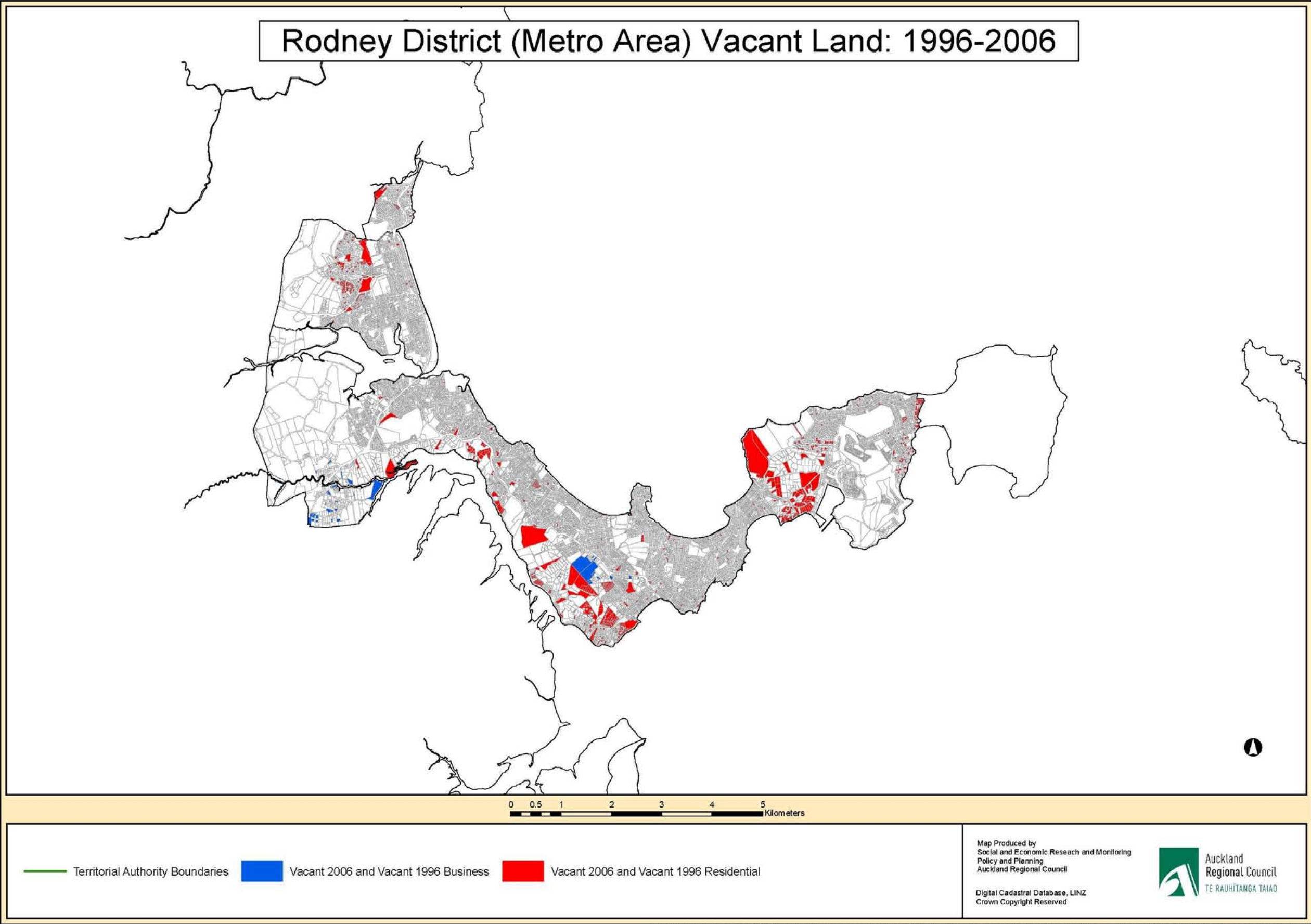
Map 55: Franklin District Rural Area Capacity: 2006



File: 09/05/08 Craig J:\SECTION\PolicyPlanningMonitoringResearch\Project\RuralCapacities2006\MXD\FINAL\_Franklin\_Rural\_Capcties\_2006.mxd



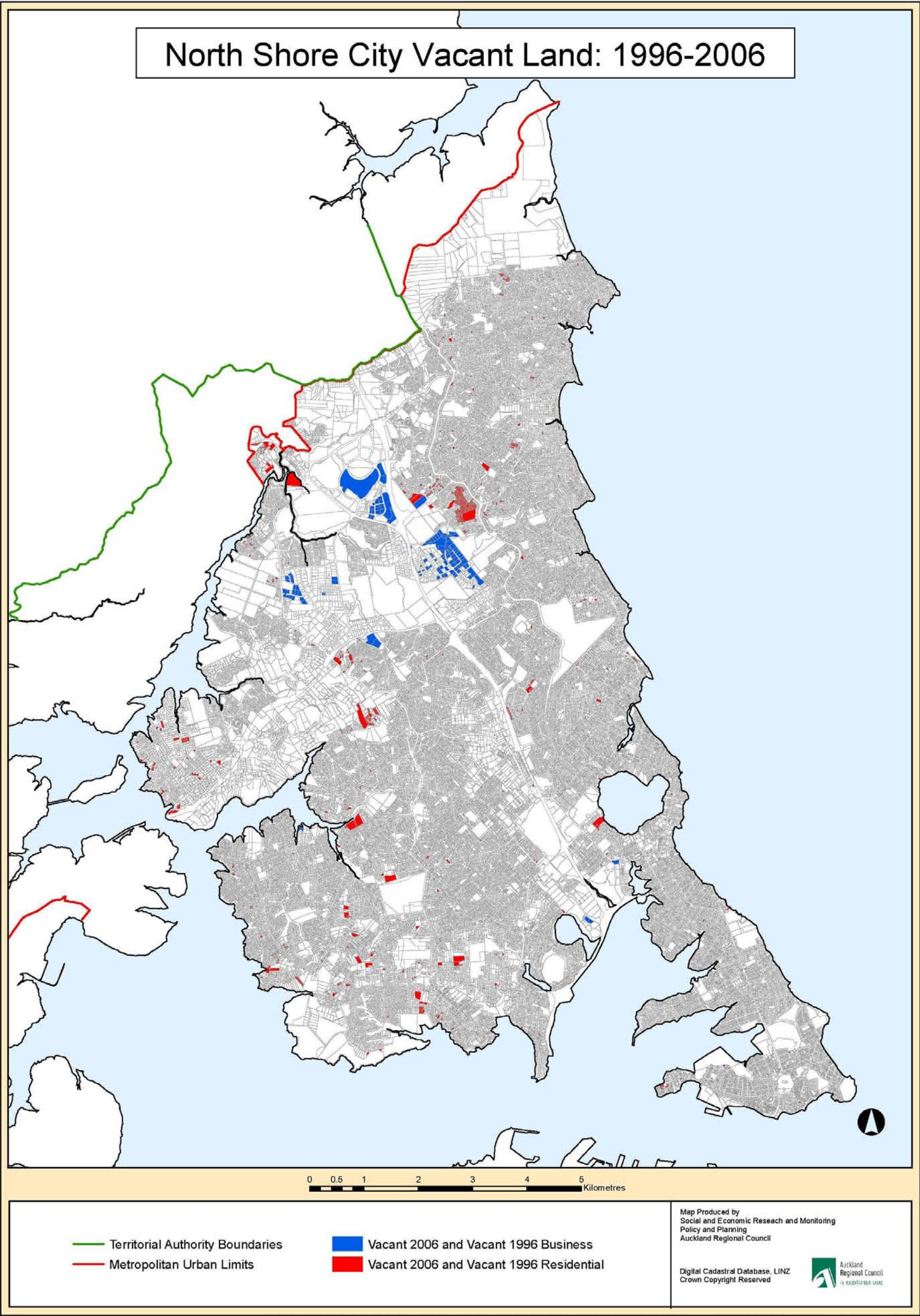
Map 56: Rodney District Land Vacant 1996 to 2006



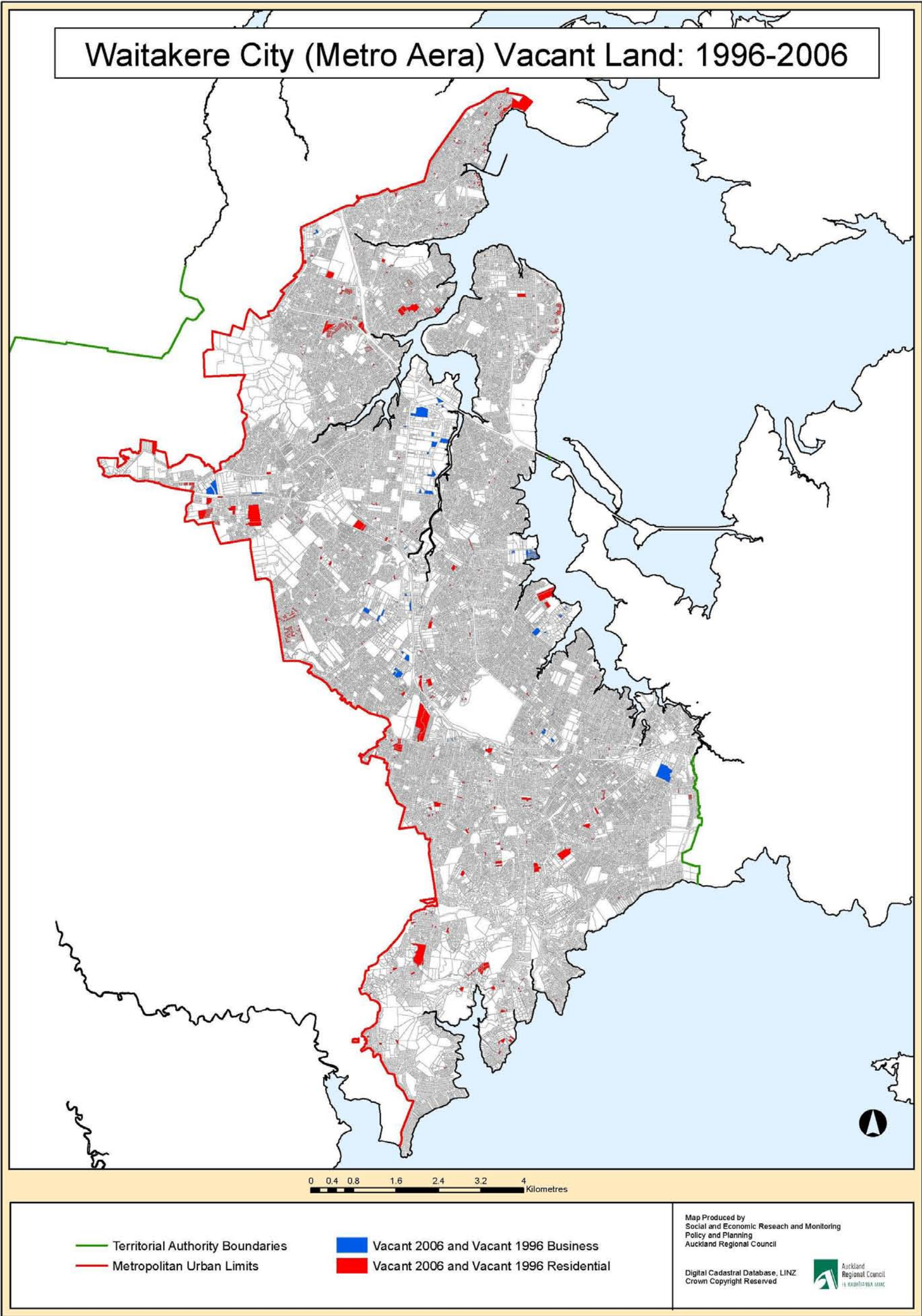
File: 23/11/2009 CraigF J:\SECTION\Policy\Planning\MonitoringResearch\Project\UrbanCapacities2006\IXDs\Historical Vacancy Maps 2009\1123\Historical Vacancy\_Rodney\_A3.mxd



Map 57: North Shore City Land Vacant 1996 to 2006

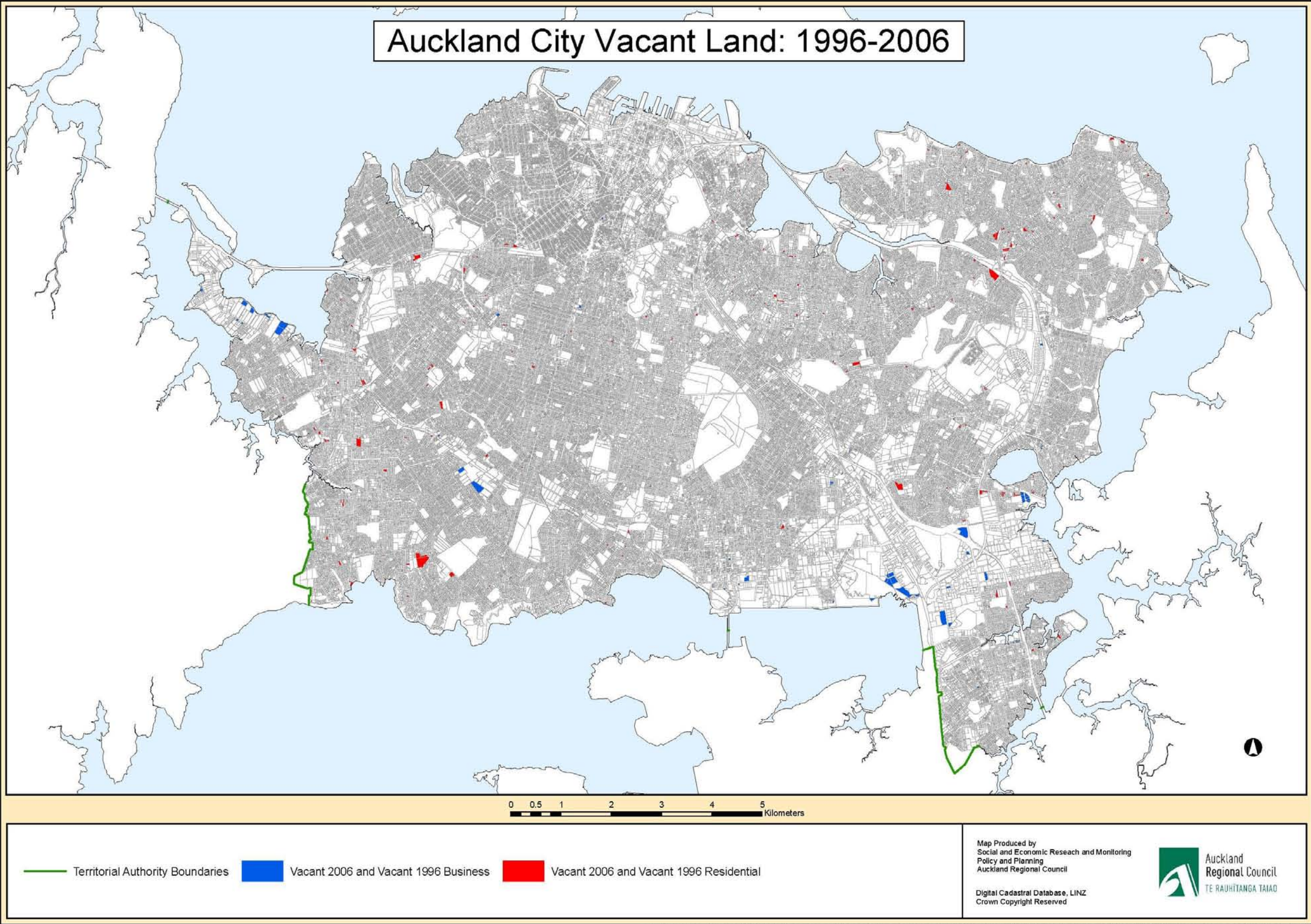






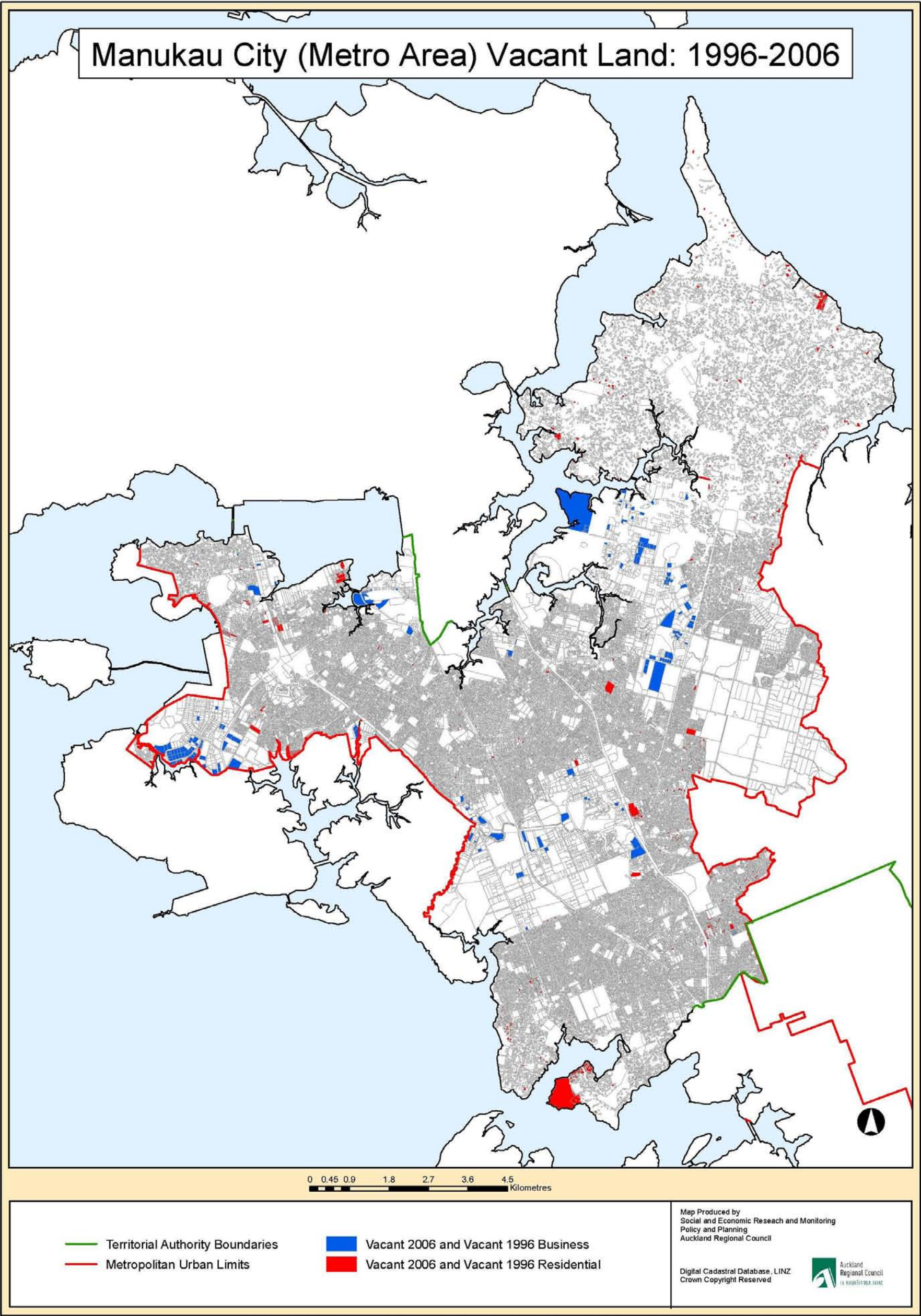


Map 59: Auckland City Land Vacant 1996 and 2006

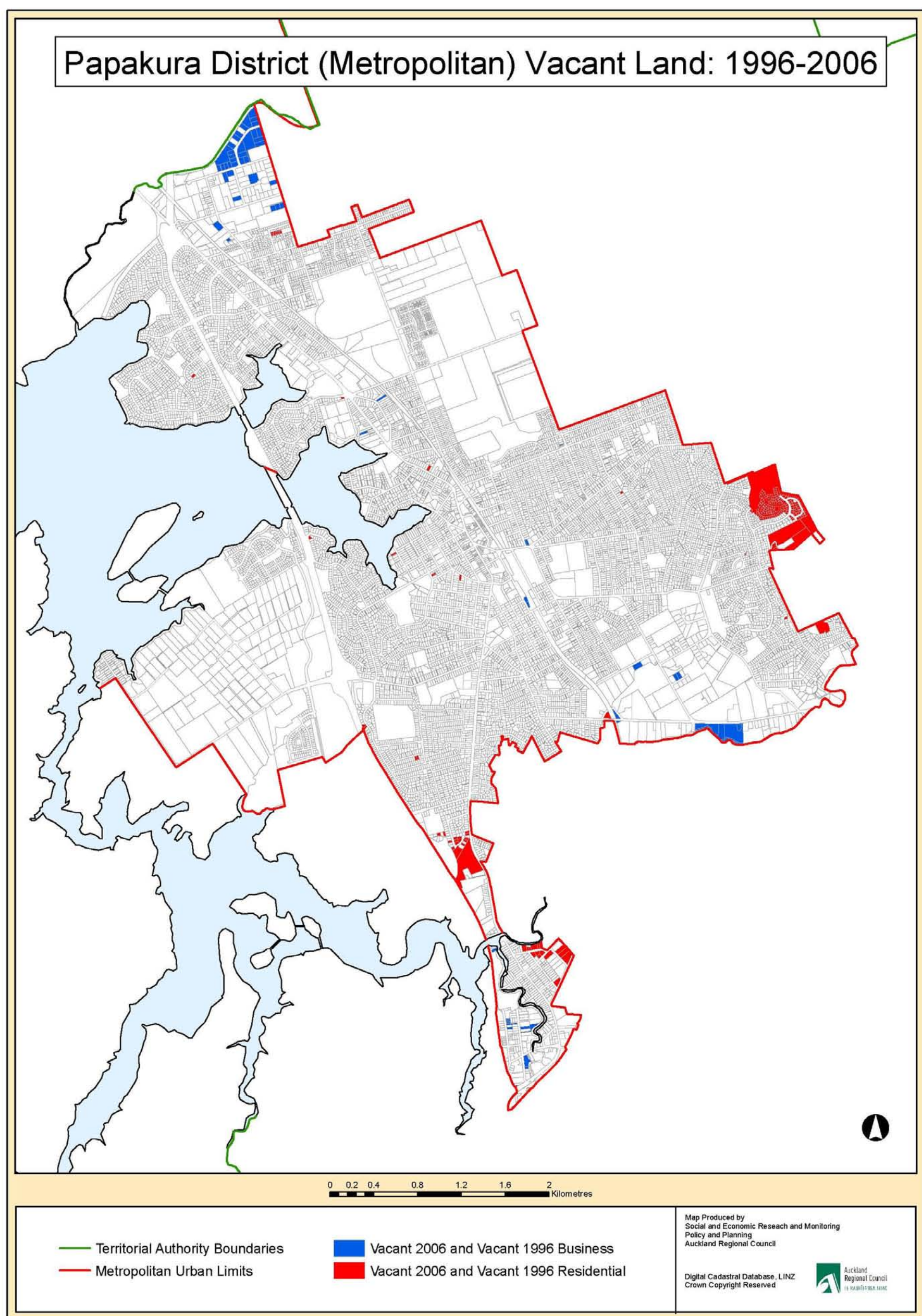


File: 23/11/2009: CraigF: J:\SECTION\PolicyPlanningMonitoringResearch\Project\UrbanCapacities2006\WXDs\Historical Vacancy Maps 2009\1123\Historical Vacancy\_Auckland\_A3.mxd











Map 62: Auckland Regional Freight Network 2010

