

Marine Water Quality Annual Report 2012

November 2013

Technical Report 2013/051

Auckland Council

Technical Report 2013/051

ISSN 2230-4525 (Print)

ISSN 2230-4533 (Online)

ISBN 978-1-927302-29-3 (Print)

ISBN 978-1-927302-30-9 (PDF)

This report has been peer reviewed by the Peer Review Panel using the Panel's terms of reference

Submitted for review on 30 September 2013

Review completed on 12 November 2013

Reviewed by one reviewer

Approved for Auckland Council publication by:

A handwritten signature in black ink, appearing to read 'G. Holland', with a horizontal line drawn across the middle of the signature.

Name: Greg Holland

Position: Manager, Research Investigations and Monitoring Unit

Date: 12 November 2013

Recommended citation:

Walker, J and Vaughan, M (2013). Marine water quality annual report 2012.

Auckland Council technical report, TR2013/051

© 2013 Auckland Council

This publication is provided strictly subject to Auckland Council's copyright and other intellectual property rights (if any) in the publication. Users of the publication may only access, reproduce and use the publication, in a secure digital medium or hard copy, for responsible genuine non-commercial purposes relating to personal, public service or educational purposes, provided that the publication is only ever accurately reproduced and proper attribution of its source, publication date and authorship is attached to any use or reproduction. This publication must not be used in any way for any commercial purpose without the prior written consent of Auckland Council. Auckland Council does not give any warranty whatsoever, including without limitation, as to the availability, accuracy, completeness, currency or reliability of the information or data (including third party data) made available via the publication and expressly disclaim (to the maximum extent permitted in law) all liability for any damage or loss resulting from your use of, or reliance on the publication or the information and data provided via the publication. The publication, information, and data contained within it are provided on an "as is" basis.

Marine Water Quality Annual Report 2012

Jarrod Walker

Melanie Vaughan

Research, Investigations and Monitoring Unit

Auckland Council

Table of Contents

1.0	Executive Summary	1
2.0	Introduction	2
2.1	Report content	4
3.0	Methods	5
3.1	Programme design	5
3.2	Water quality parameters.....	8
3.3	Programme changes	8
3.4	Quality control, data storage and analysis	9
3.5	Reports	9
4.0	Results and discussion	11
4.1	Box plots.....	12
4.2	Marine Water Quality Index	19
4.3	Data tables	21
5.0	References.....	38
6.0	Acknowledgements.....	39
Appendix A	Physico-chemical measures	40
Appendix B	Water Quality Indices.....	41

List of Figures

Figure 1-1 The relationship between sediment contaminants, coastal water quality and shellfish contaminant monitoring programmes.....	4
Figure 2-1 Location of the 36 marine quality monitoring sites	7
Figure 3-1 Spatial patterns in conductivity, salinity and pH.	12
Figure 3-2 Spatial patterns in turbidity, suspended sediment, and chlorophyll <i>a</i>	13
Figure 3-3 Spatial patterns in nitrite, nitrate and ammonia.	14
Figure 3-4 Spatial patterns in total kjedahl nitrogen and total nitrogen.	15
Figure 3-5 Spatial patterns in total phosphorous and soluble reactive phosphorous.....	16
Figure 3-6 Spatial patterns in enterococci.	17
Figure 3-7 Spatial patterns in two indices of dissolved oxygen (ppm and % saturation) and sea surface temperature.....	18

List of Tables

Table 3-1	Marine water quality sites sorted from north to south, grouped by location.....	6
Table 4-1	Water quality index and the resultant water quality class..	20
Table 4-2	Electrical conductivity (mS.cm^{-1})	21
Table 4-3	Salinity (ppt)	22
Table 4-4	pH (pH units)	23
Table 4-5	Turbidity (NTU).....	24
Table 4-6	Suspended sediment (mg/L)	25
Table 4-7	Chlorophyll <i>a</i> (mg/L).....	26
Table 4-8	Nitrite (mg N/L).....	27
Table 4-9	Nitrate (mg N/L).....	28
Table 4-10	Ammonia (mg N/L).....	29
Table 4-11	Total kjedahl nitrogen (mg N/L).....	30
Table 4-12	Total nitrogen (by calculation, mg N/L)	31
Table 4-13	Total phosphorus (mg/L).....	32
Table 4-14	Soluble reactive phosphorus (mg/L)	33
Table 4-15	Enterococci (CFU/100ml).....	34
Table 4-16	Dissolve oxygen (% saturation)	35
Table 4-17	Dissolved oxygen (ppm)	36
Table 4-18	Temperature ($^{\circ}\text{C}$).....	37
Table A-1	Summary of marine water quality parameters, detection limits, analytical methods and two sources of data collection.	40
Table B-1	The seven water quality parameters, and their objectives, used to produce the water quality indices.....	42

1.0 Executive Summary

The Auckland Council operates a long-term saline water quality monitoring programme throughout the region. The objectives of this monitoring include State of the Environment reporting, identification of environmental issues and the assessment of the efficiency of council policy initiatives and strategies. This report documents any changes made to the monitoring programme and provides a summary of the data collected during the 2012 calendar year.

Water quality is assessed monthly at 36 sites, divided into 6 geographically distinct runs around the region, using a combination of field based and laboratory tested parameters. The results are presented as box plots, which display the variation in the measured parameters at each of the sites, and in tables which provide a statistical summary of each parameter at each site.

The data has been used to produce water quality indices, which allows for sites to be assigned a water quality class and ranked. This is the first year where a three-year average has been used to calculate the water quality indices. This analysis provides a simple form of results to be communicated from complex water quality data. The 2012 data indicates that Mahurangi Heads has the best water quality in the region, and Brighams Creek had the lowest ranked water quality. Nineteen sites changed water quality class from their 2011 classification.

2.0 Introduction

The marine environment in the Auckland region encompasses two oceans, four major harbours, and numerous estuaries. This wide variety of marine habitats supports a diverse range of plants and animals, including seaweeds, invertebrates (e.g. sponges and kina), mangroves, seagrass, shellfish, marine mammals, fish and sea birds.

The aesthetics, use, and health of near coastal waters are influenced by the quality of freshwater that runs from the land through streams, rivers and the stormwater system. The microbiological contamination of beaches after heavy rainfall and the sedimentation of harbours and estuaries (ARC, 2009) illustrate the connections between inland and coastal waters, and the sensitivity of these ecosystems.

The marine water quality programme is designed to meet the following objectives:

- Satisfy the Auckland Council's Resource Management Act 1991 section 35 obligations with respect to state of the environment reporting.
- Contribute to the need to maintain and enhance the quality of the environment monitoring (Local Government Act (2002)).
- Help inform the efficacy and efficiency of policy initiatives and strategies.
- Assist with the identification of large scale and/or cumulative impacts of contaminants associated with varying land uses and disturbance regimes and link these to particular activities.
- Provide baseline, regionally representative data to support the resource consent process and compliance monitoring.
- Answering queries from the public, and promote awareness of water quality issues.

This programme fits under the "Natural Environment and Heritage" component of the Auckland Council's Long-term Community Plan 2009-19. A key issue for the region is to manage the effects of growth and development on our natural environment. This includes balancing the needs for environmental protection with Auckland's social, economic and cultural well being and aspirations for our coastal resources and marine animal and plant life.

Specific objectives include managing and minimising the effects of present and future urban and rural development, growth, and intensification across the region. The water quality parameters provide information on the condition of the region's marine environment, and feedback on management actions. This is necessary to confirm that Auckland Council's management strategies are effective in sustaining ecosystem functions and uses. By achieving this outcome we are working towards achieving Auckland Council's aspiration of being:

- "The world's most liveable city"

Information from the marine water quality programme is also used to measure the success of several strategic directives in the Auckland Plan including: Directive 7.10 "Manage land to support the values of waterbodies by protecting them where they are high and reviving them where they are degraded" and Directive 7.12 "Protect coastal areas - particularly those with high values - from the impacts of use and development, and enhance degraded areas" (Auckland Council, 2012).

The marine water quality programme monitors water quality across the Auckland Region. Information obtained is also used in conjunction with ecological and contaminant data to provide an integrated overview of the physical, chemical, and biological condition of the region's marine environment (Figure 2-1), the four marine monitoring programmes include:

- The marine water quality programme monitors natural occurring parameters, some of which can become elevated in association with natural variations in ocean hydrodynamics, land erosion and biological wastes (organic material and faecal contaminants) in the water column.
- The shellfish contaminant monitoring programme indirectly monitors chemical contaminants in the water column. Direct measurement of chemical contaminants in water is unreliable because concentrations are commonly below analytical detection limits, and they vary widely due to water movement and the patchy nature of inputs. However, some plants and animals accumulate contaminants over time, even when ambient levels in the water column are relatively low. The tissues of oysters and mussels therefore provide an integrated measure of ambient chemical contaminant levels in the water column.
- The sediment contaminant monitoring programme monitors chemical contaminant levels in estuarine and harbour sediments. Many contaminants attach to particulate material which settles out of the water column and accumulates in depositional zones. These contaminants can be toxic to the benthic organisms that live in these sediments. Reduced sediment quality may impact on the ecological health of an area by reducing sensitive species and favouring tolerant species.
- The benthic ecology programme monitors temporal changes in specific sediment dwelling, ecological communities in the Mahurangi, Waitemata, Kaipara and Manukau Harbours and East Coast estuaries.

Further details of the programmes can be found in the Marine Monitoring Plan (Carbines et al, 2013).

Collectively, these programmes provide consistent, long-term information on the quality of Auckland's coastal environment. These programmes are strengthened further by the streams and rivers monitoring programme which monitor similar parameters to those in the marine water quality programme. This alignment enables trends in the marine environment and the freshwater environment to be compared allowing the determination (to a certain degree) of the source of some water quality parameters.

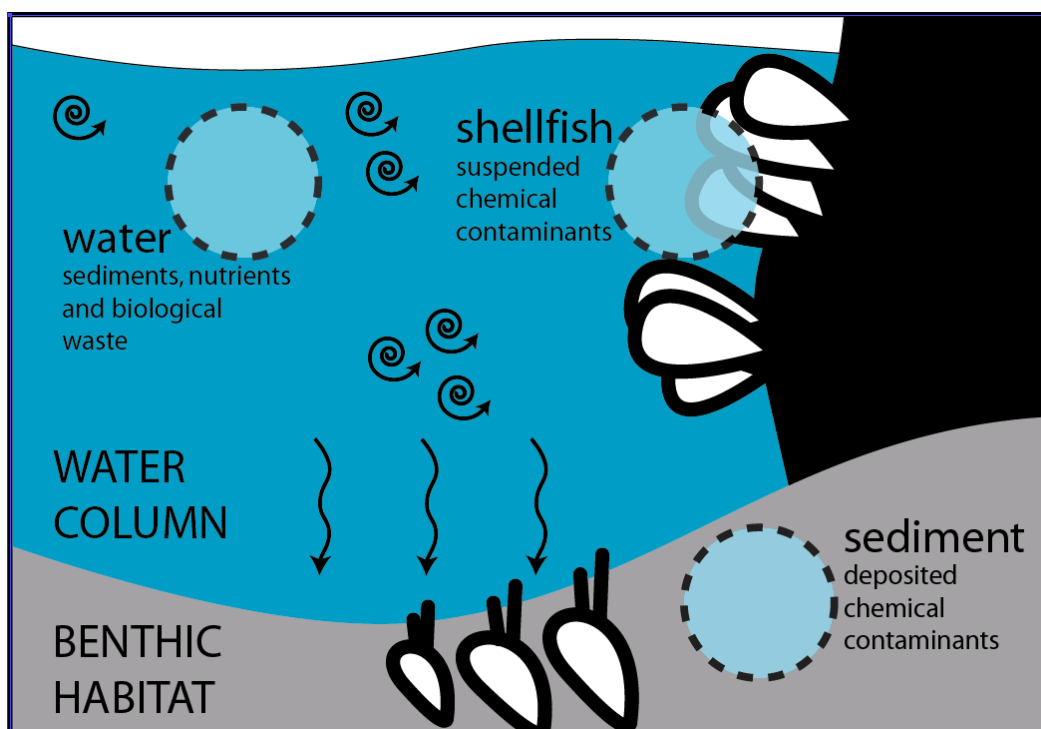


Figure 2-1 The relationship between sediment contaminants, coastal water quality and shellfish contaminant monitoring programmes.

2.1 Report content

This report provides 12-months of summary data from the 2012 calendar year collected from 36 monitoring sites across the Auckland region (Figure 3-1), and includes summary statistics tabulated by parameter grouped by spatial proximity, and water quality indices.

3.0 Methods

3.1 Programme design

Sampling of surface waters for marine water quality monitoring is undertaken monthly by Auckland Council technical officers, predominantly by helicopter. This enables sites spread over a broad area to be collected within a narrow time frame due to tidal constraints (these constraints are described below). Sites where water samples are not collected using a helicopter include, the Upper Waitemata Harbour sites which are sampled by boat, and the Tamaki Estuary sites which are sampled from land. At each site, water samples are collected from the surface waters (the top 1 m) by lowering a 2 litre plastic bottle and 500ml glass bacteria bottle into the water. The 2 litre plastic and glass bacteria bottles are sent to Watercare Laboratory Services (WLS) and analysed for chemical compounds (see Appendix A) and enterococci.

Sampling is divided into 6 geographically distinct runs, summarised below. Routine water quality monitoring locations are summarised in Table 3-1 and illustrated in Figure 3-1.

- 8 sites in Manukau Harbour;
- 7 sites in the inner Hauraki Gulf and outer Waitemata Harbour;
- 7 sites in Kaipara Harbour;
- 3 sites in Mahurangi Harbour;
- 2 sites in Tamaki Estuary;
- 2 sites in the Tamaki Strait (1 site in Turanga Estuary and 1 site at the mouth of the Wairoa River).
- 8 sites in the Upper Waitemata Harbour.

Temporal variation is avoided as much as possible by maintaining a consistent sampling time relative to tidal cycle. Samples are collected approximately 30mins–3hrs hours after high tide for the Kaipara Harbour, Waitemata Harbour and Hauraki Gulf sites and 2.5–4 hours after high tide for the Manukau Harbour. This avoids introducing diurnal variation to the dataset and improves the power of long-term trend detection

Table 3-1 Marine water quality sites sorted from north to south, grouped by location. Spatial reference is NZTM coordinates and the year which sampling at each site started are also listed.

Site	Location	Easting	Northing	Start
Goat Island	East Coast	1761835	5984910	1993
Ti Point	East Coast	1760222	5978524	1991
Mahurangi Heads	East Coast	1754382	5959892	1993
Dawsons Creek	East Coast	1753554	5966410	1993
Orewa	East Coast	1753273	5949612	1991
Browns Bay	East Coast	1757934	5935780	1991
Shelly Beach	Kaipara Harbour	1723526	5951872	1991
Kaipara River	Kaipara Harbour	1726372	5946975	2009
Makarau estuary	Kaipara Harbour	1728450	5953472	2009
Omokoiti beacon	Kaipara Harbour	1718659	5961178	2009
Kaipara Heads	Kaipara Harbour	1709351	5970137	2009
Tauhoa Channel	Kaipara Harbour	1717979	5969681	2009
Hoteo River	Kaipara Harbour	1726690	5967497	2009
Chelsea	Waitemata Harbour	1753944	5922872	1991
Whau Creek	Waitemata Harbour	1748289	5920291	1991
Henderson Creek	Waitemata Harbour	1746712	5923648	1991
Hobsonville Jetty	Waitemata Harbour	1749321	5927317	1993
Waimarie Road	Waitemata Harbour	1746213	5929089	1993
Rarawaru Creek	Waitemata Harbour	1744434	5928653	1993
Confluence	Waitemata Harbour	1743962	5929039	1993
Paremoremo Ski Club	Waitemata Harbour	1745746	5930178	1993
Rangitopuni Creek	Waitemata Harbour	1742836	5929868	1993
Brighams Creek	Waitemata Harbour	1742758	5928019	1993
Lucas Creek	Waitemata Harbour	1750045	5932471	1993
Tamaki	Tamaki Estuary	1769372	5917448	1992
Panmure	Tamaki Estuary	1765295	5913934	1992
Turanga Estuary	Tamaki Strait	1774464	5914091	2009
Wairoa River	Tamaki Strait	1786443	5909850	2009
Grahams Beach	Manukau Harbour	1749651	5888082	1987
Clarks Beach	Manukau Harbour	1748630	5897349	1987
Waiuku Town Basin	Manukau Harbour	1753690	5878187	2012
Shag Point	Manukau Harbour	1748379	5908452	1987
Puketutu Point	Manukau Harbour	1753877	5908724	1987
Weymouth	Manukau Harbour	1764925	5897672	1987
Mangere Bridge	Manukau Harbour	1758588	5910714	1987
Manukau Heads	Manukau Harbour	1708915	5970600	2009



Figure 3-1 Location of the 36 marine quality monitoring sites

Monitoring sites were selected to provide information on:

- Water quality across a disturbance gradient from high to low;
- A range of exposure levels including open coast, sheltered coast, harbours, large estuaries and tidal creeks;
- The main harbours and large estuaries;
- Areas with a variety of adjacent land uses, ranging from urban/industrial to rural;

3.2 Water quality parameters

The water quality of the region's coastal environment is determined by measuring 19 parameters. Some parameters are measured in the field but most are analysed in the laboratory (see Table A-1, Appendix A). The number and type of parameters has varied since the programme's inception as new technology became more affordable, instrument sensitivity improved and the programme objectives were modified.

3.3 Programme changes

The monitoring programme was last reviewed in June 2005. Following this review biological oxygen demand (BOD) was dropped in July 2005 from the list of analytical laboratory tests due to laboratory analysis consistently returning results at the laboratory detection limit (<2ppm) and no improved methodology from WaterCare Laboratory Services Ltd being forthcoming upon request. The measurement of water clarity using Secchi disk also ceased in July 2005 due to the difficulty of accurately estimating Secchi disk readings from the helicopter. Turbidity (measured in NTU) was deemed to be a useful approximate surrogate.

In November 2008 a hand held multi-parameter water probe was introduced to the programme. The hand held probe (YSI 556 MPS) is able to take in situ measures of salinity, conductivity, temperature, and two dissolved oxygen readings (% saturation and concentration recorded in mg. L⁻¹). Previous to this, these parameters were measured in the lab by WLS.

In January 2009 six new sites in the Kaipara Harbour were added to this programme. In addition, one site at the Manukau Heads, one site at Turanga estuary and one site at the mouth of the Wairoa River were also added. An additional site, Waiuku Town Basin was added to the programme in August 2012. These additional sites allow for greater coverage of the coastal waters of the Auckland region.

Faecal coliforms were deleted from the list of laboratory tests in 2009 as Enterococci is considered a more appropriate bacteria indicator in marine waters. Also, total nitrogen (TN) was added to the list of chemical variables as it can be calculated from the current nitrogen species analysed at the WLS.

3.4 Quality control, data storage and analysis

Quality control is undertaken in accordance with Auckland Council's internal standards, including procedures for the collection, transport and storage of samples, and methods for data verification and quality assurance to ensure consistency across the monitoring programme. Samples are analysed under contract to the Auckland Council by Watercare Laboratory Services Ltd (WLS), an IANZ accredited laboratory. Analytical methods follow the "Standard Methods for the Examination of Water and Wastewater" 22nd Edition (APHA, 2012). All field and laboratory data are stored in the Auckland Council's water quality archiving database (HYDSTRA) and complies with ISO 9001:2008 accreditation.

The data is collated and used to produce;

- Box plots which display variation in the measured parameters at each of the sites. The boxplots were produced using the software package SigmPlot version 12.0, using the default percentile functions. The boxes represent the inter-quartile range (25th and 75th percentile) and the whiskers represent the 5th and 95th percentiles. The median is shown as a line within each box.
- Summary tables which provide a statistical summary of each parameter at each site. These have been produced using Statistica version 10.
- Water Quality Indices have been produced using the data for seven water quality parameters to allow a water quality class to be assigned to each site. Indices are classed as Poor, Fair, Good and Excellent. These were produced using an excel workbook produced by the Canadian Council of Ministers of the Environment (2001). The application of this method to the council's water quality data is described in Appendix B.

3.5 Reports

This is the 22nd data report since the inception of the monitoring programme, and it is the sixth time since 2000 that the data has been reported separately from the rivers, streams and lakes water quality monitoring programmes. Previous reports described in the list of references can be obtained by contacting Auckland Council on (09) 301 0101, or in electronic format from Auckland Council's website under 'Technical publications and research':

<http://www.aucklandcouncil.govt.nz/en/planspoliciesprojects/reports/technicalpublications>

A comprehensive trend analysis is conducted approximately every five years, with the last report published in 2008 (Scarsbrook 2008, TP2008/005) and a previous report published in 1999 (Vant and Lee, 1998). Auckland Regional Council's State of the Auckland Region Report 2009 briefly summarises water quality issues, including an assessment of the ecological health of the region's marine resources and land use pressures (ARC, 2009).

The marine water quality monitoring programme is also reviewed approximately every five years. Recent reviews were conducted concurrently with the last trend analysis in 2008 (Scarsbrook 2008, TP2008/005). A number of recommendations were made in this report along with detailed

analysis of long-term changes in water quality for the Auckland region. This report is available on the Auckland Council web site.

A specific review of the Mahurangi Harbour, Upper Waitemata Harbour and Tamaki Estuary was last undertaken in 2001 (Wilcock and Kemp, 2001).

4.0 Results and discussion

Data from the 2012 calendar year are presented as box plots to display the ranges over which water quality parameter results were recorded. These plots also show the variations in the water quality parameters among sites and locations and the data are summarised in tables in section 4.3. Data tables contain summary statistics (sample sizes, maximum/minimum, means and standard error). For box plots and data tables, sites are grouped by location (e.g. all sites within the Manukau Harbour are grouped) and then listed from north to south. Water indices produced using the data. A more comprehensive state of the environment and trends water quality report will be reported in 2014.

4.1 Box plots

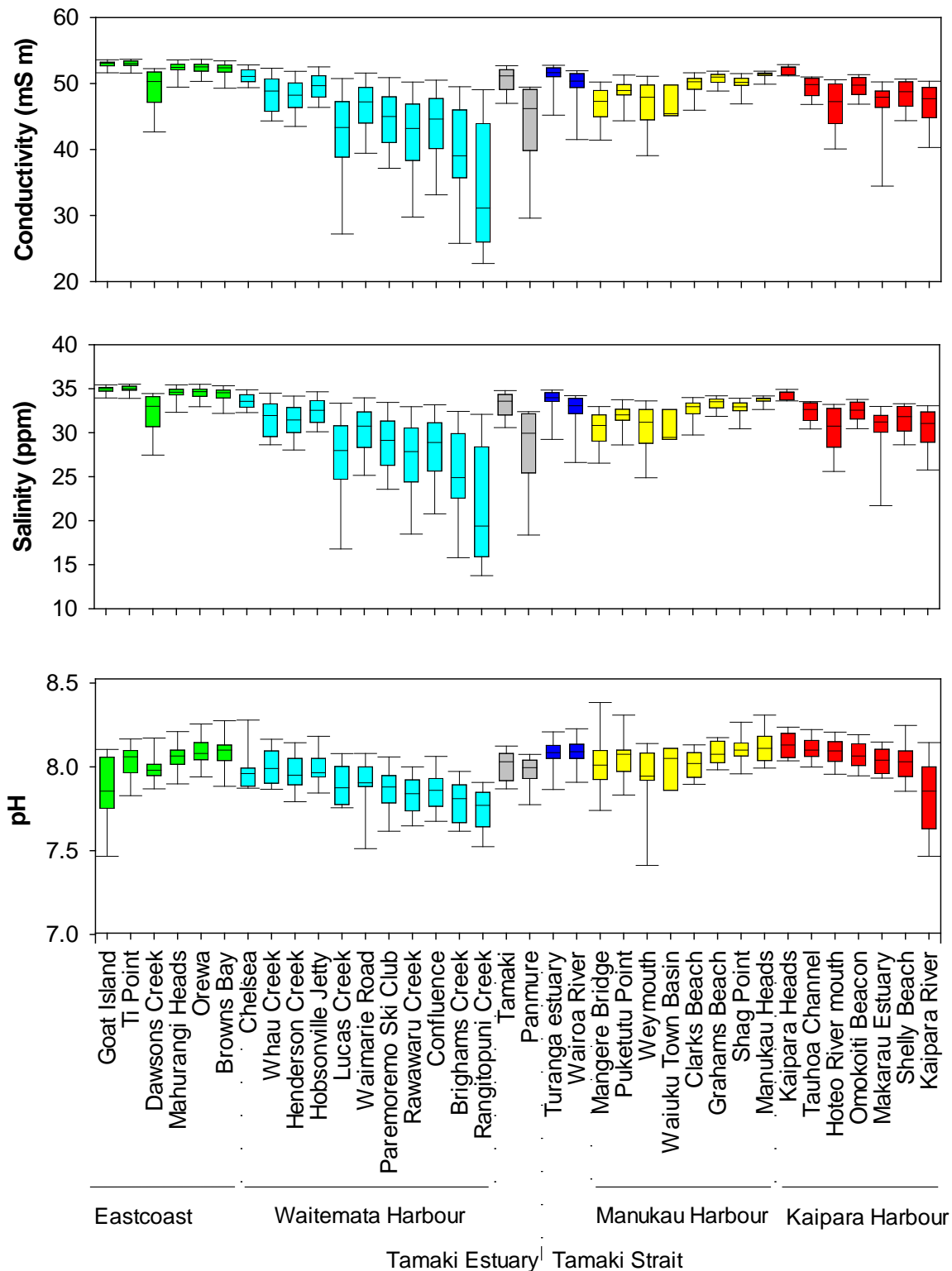


Figure 4-1 Spatial patterns in conductivity, salinity and pH. Boxes represent the median, 25th and 75th percentiles while whiskers are 5th and 95th percentiles for data collected from January 2012 to December 2012. Percentiles values calculated using the standard method in SigmaPlot (v12).

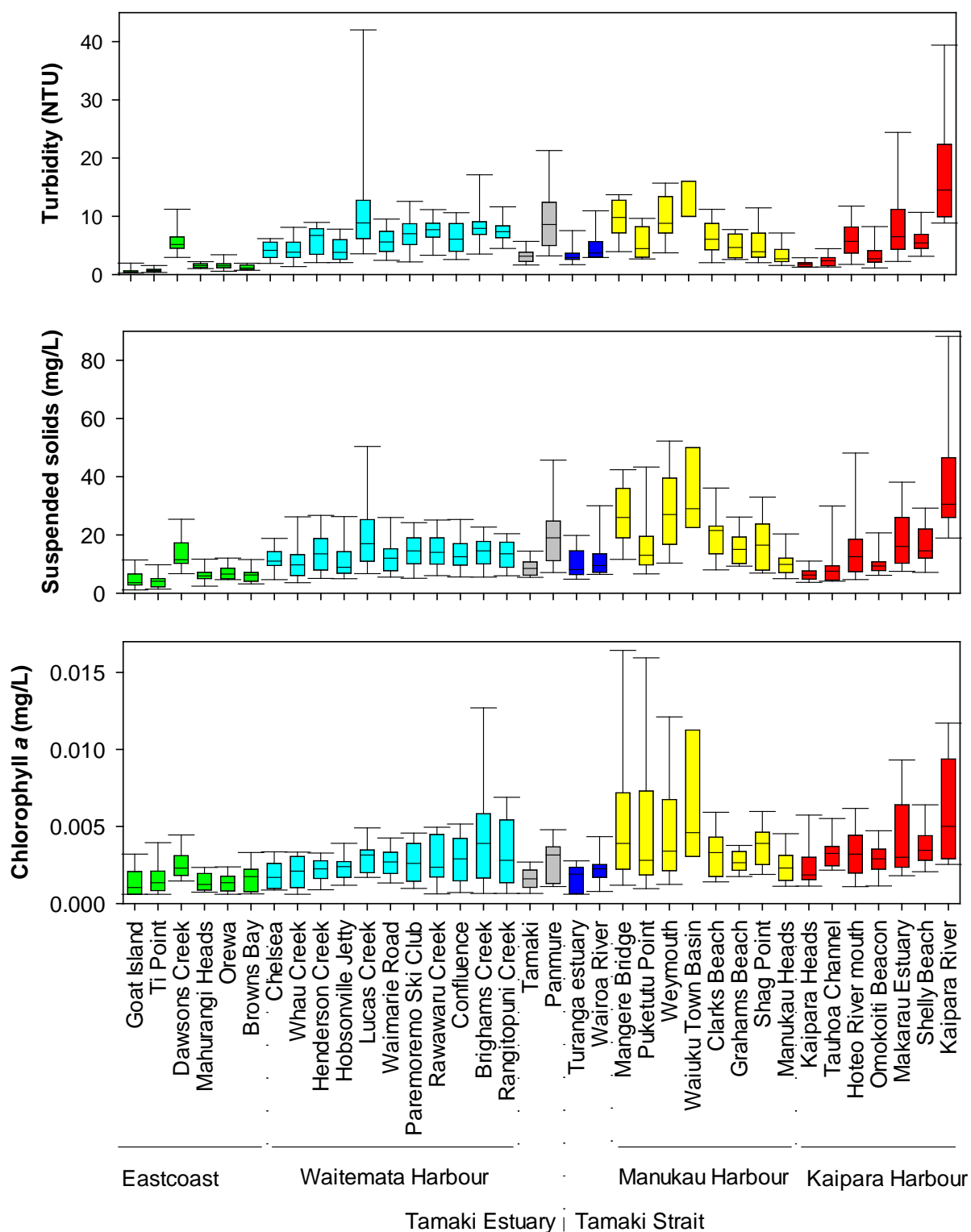


Figure 4-2 Spatial patterns in turbidity, suspended sediment, and chlorophyll a. Boxes represent the median, 25th and 75th percentiles while whiskers are 5th and 95th percentiles for data collected from January 2012 to December 2012. Percentiles values calculated using the standard method in SigmaPlot (v12).

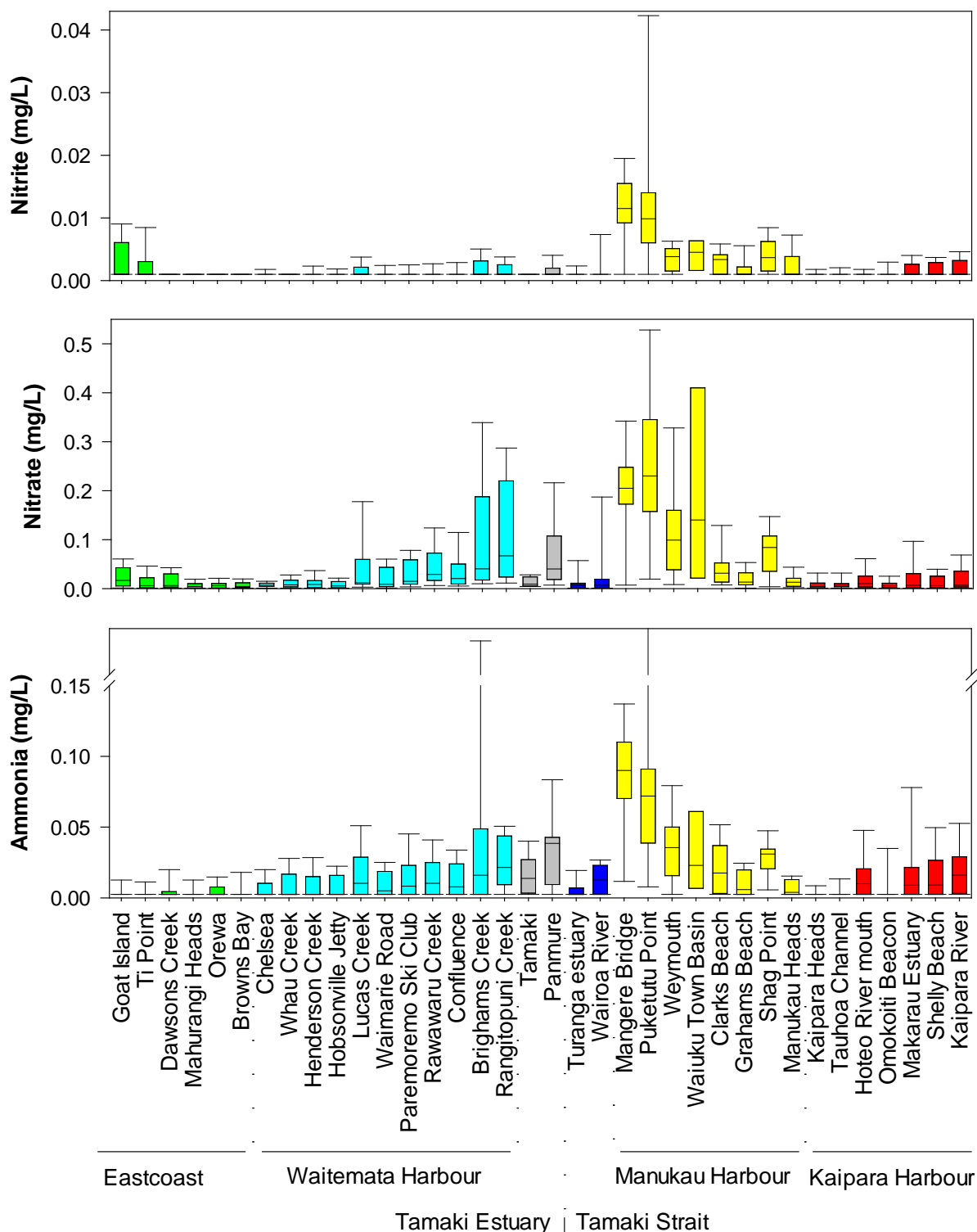


Figure 4-3 Spatial patterns in nitrite, nitrate and ammonia. Boxes represent the median, 25th and 75th percentiles while whiskers are 5th and 95th percentiles for data collected from January 2012 to December 2012. Percentiles values calculated using the standard method in SigmaPlot (v12). Note the scale break in the y-axis of the ammonia plot.

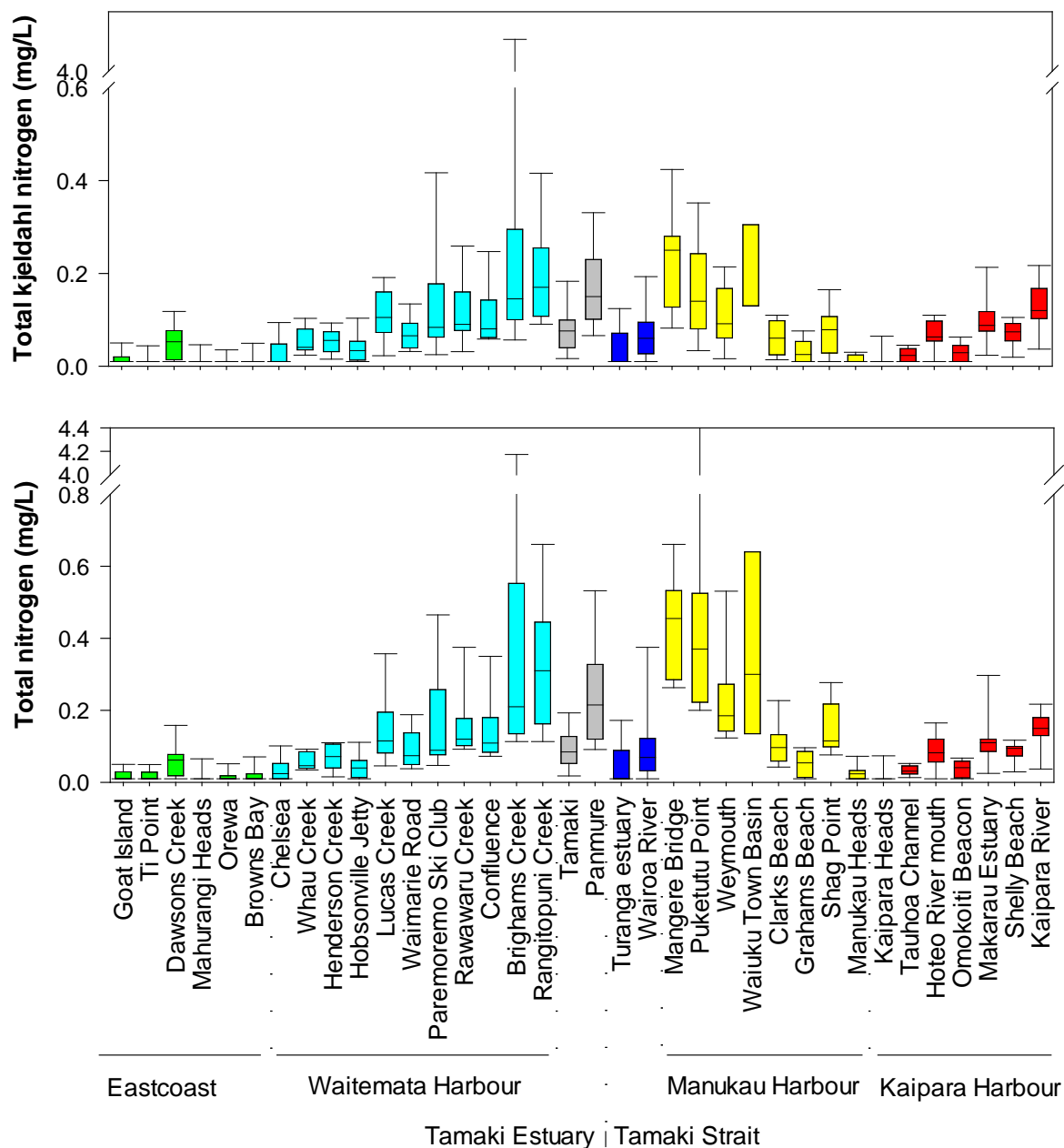


Figure 4-4 Spatial patterns in total kjeldahl nitrogen and total nitrogen. Boxes represent the median, 25th and 75th percentiles while whiskers are 5th and 95th percentiles for data collected from January 2012 to December 2012. Percentiles values calculated using the standard method in SigmaPlot (v12). Note the scale break in the y-axis of both plots.

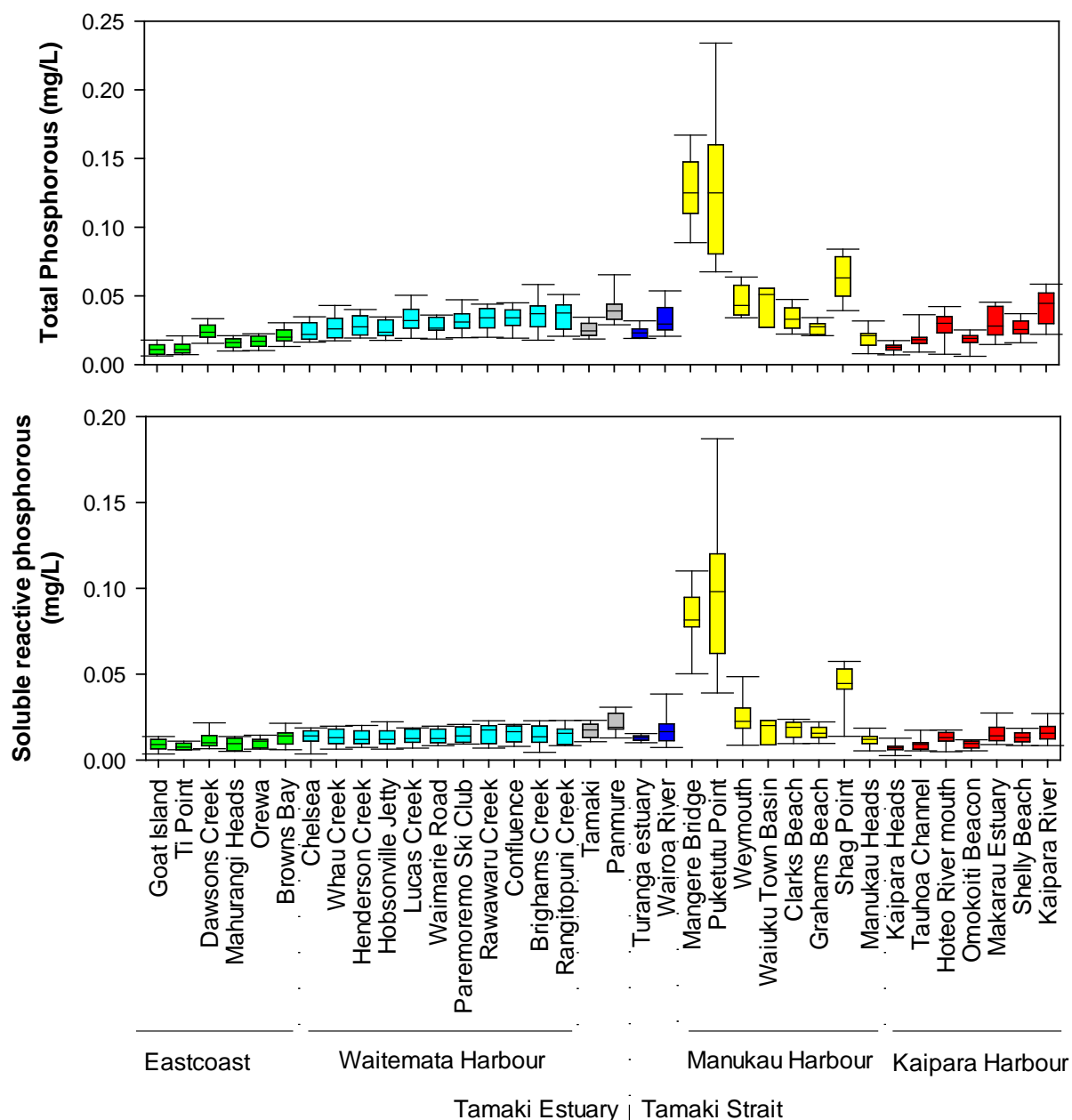


Figure 4-5 Spatial patterns in total phosphorous and soluble reactive phosphorous. Boxes represent the median, 25th and 75th percentiles while whiskers are 5th and 95th percentiles for data collected from January 2012 to December 2012. Percentiles values calculated using the standard method in SigmaPlot (v12).

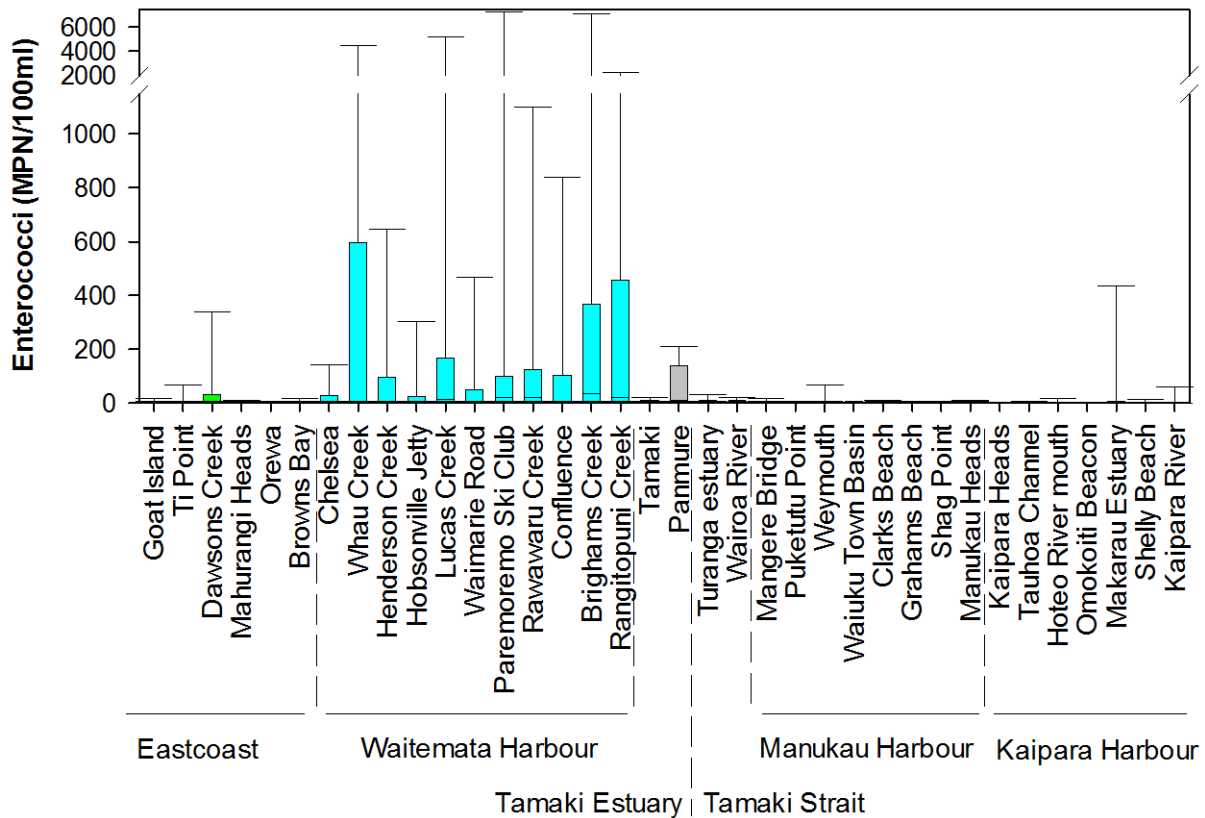


Figure 4-6 Spatial patterns in enterococci. Boxes represent the median, 25th and 75th percentiles while whiskers are 5th and 95th percentiles for data collected from January 2012 to December 2012. Percentiles values calculated using the standard method in SigmaPlot (v12). Note the scale break in the y-axis of the plot.

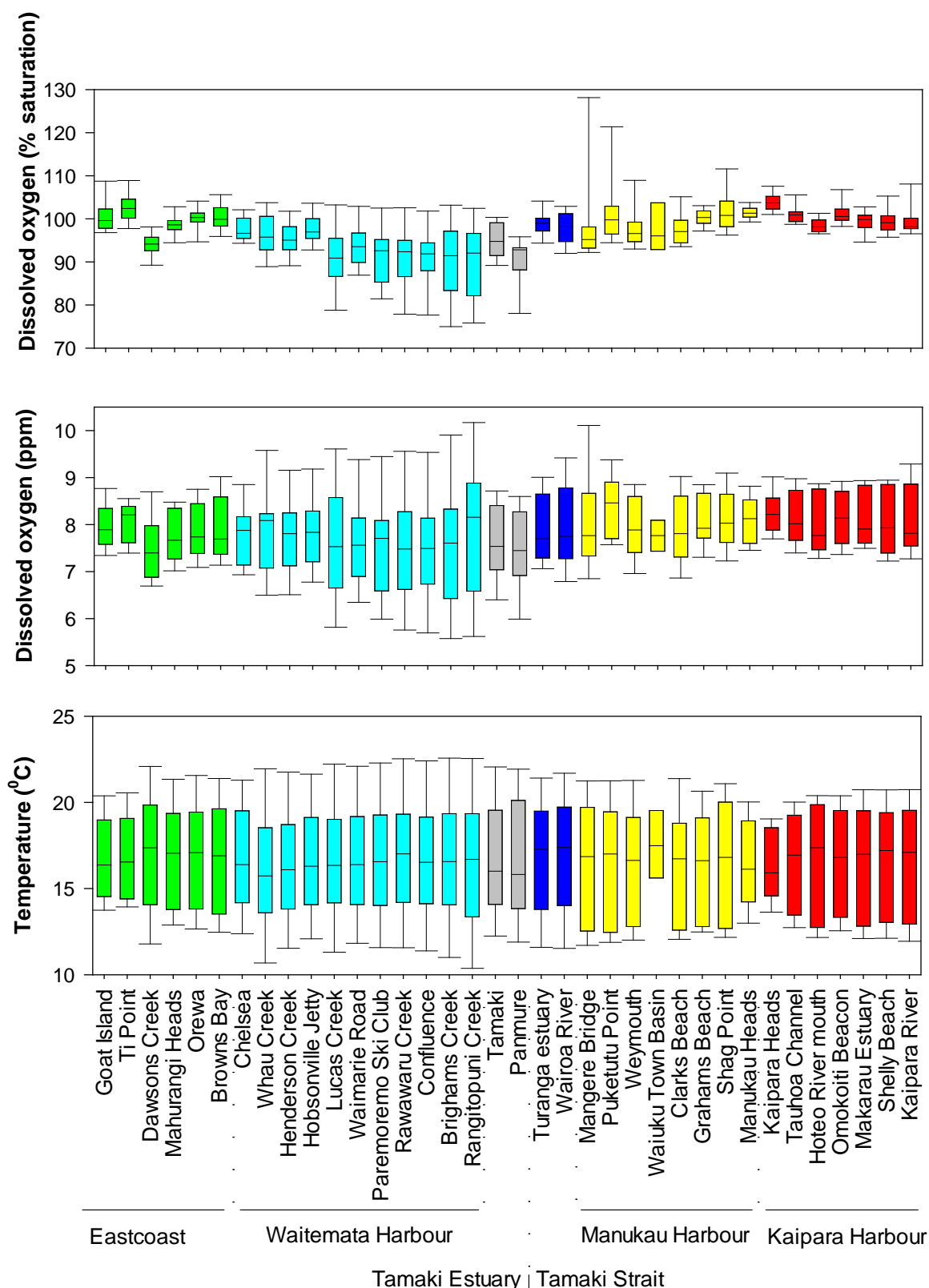


Figure 4-7 Spatial patterns in two indices of dissolved oxygen (ppm and % saturation) and sea surface temperature. Boxes represent the median, 25th and 75th percentiles while whiskers are 5th and 95th percentiles for data collected from January 2012 to December 2012. Percentile values calculated using the standard method in SigmaPlot (v12).

4.2 Marine Water Quality Index

Using the methodology described in Appendix B and first applied in the 2009 annual water quality report, water quality indices and classes were generated for each of the 36 sites (Table 4-1). The water quality indices for 2012 present an average of three years of data (2010, 2011 and 2012), differing from previous reports that present a single year's data. This approach has been adopted to eliminate any inter annual variations from environmental changes such as input from development, heavy rain fall etc.

Mahurangi Heads was the site with the best water quality in 2012, maintaining the same positions as it held in 2011. The site was classed as excellent and was the only site within this category in 2012, compared to seven sites in 2011 (Walker and Vaughan, 2013b). Brighams Creek had the worst water quality of all monitoring sites in 2012, the position that was previously held by Mangere Bridge in 2010 and 2011 (Walker and Vaughan, 2013a; Walker and Vaughan, 2013b).

Nineteen sites changed water quality class from their 2011 classification (Walker and Vaughan, 2011), although this is likely to be associated with the new methodology in determining water quality indices adopted for analysing the data for this latest report. The majority of the changes were decreases in water quality with only one site (Tamaki) increasing in water quality from Poor to Fair. Of the 19 sites, six sites changed by two classes. For example a decrease in water quality from Excellent to Fair was observed in Turanga Estuary Mouth, Hobsonville Jetty and Whau Creek and Good to Poor at Omokoiti Beacon, Waimarie Road and Paremoremo Ski Club.

Of note is the change from 35% of sites having Poor water quality in 2011 to 61% in 2012. This large change is likely to be attributable to the change in methodology from a one-year to three-year data average, however this is also expected to provide a more "representative reflection" of the actual water quality indices, taking into account annual variations. Lower water quality classes can be attributed to failures to comply with quality thresholds (see Table B-1, Appendix B) for concentrations of suspended sediments, turbidity and typically one of the nutrient tests (e.g. ammoniacal nitrogen, total phosphorus or nitrate + nitrite nitrogen).

Table 4-1 Water quality index and the resultant water quality class for the sites monitored. The 2011 water quality class is also presented for inter-annual comparisons (the four indices scope, frequency, magnitude and index are discussed in Appendix B).

Site	scope	frequency	magnitude	Index	2012 class	2011 class
Mahurangi Heads	11.1	0.3	0.0	93.6	Excellent	Excellent
Orewa	22.2	0.6	0.2	87.2	Good	Excellent
Browns Bay	33.3	0.9	0.2	80.7	Good	Excellent
Goat Island	33.3	0.9	0.3	80.7	Good	Good
Ti Point	33.3	1.2	0.4	80.7	Good	Excellent
Turanga Est Mouth	44.4	1.9	2.6	74.3	Fair	Excellent
Tauhoa Channel	55.6	2.8	0.7	67.9	Fair	Good
Hobsonville Jetty	55.6	2.5	3.7	67.8	Fair	Excellent
Shelly Beach	55.6	10.3	3.3	67.3	Fair	Fair
Whau Creek	44.4	4.3	39.1	65.7	Fair	Excellent
Tamaki	44.4	3.4	48.0	62.2	Fair	Poor
Manukau Heads	66.7	4.0	1.5	61.4	Fair	Fair
Dawsons Creek	66.7	3.1	5.2	61.4	Fair	Good
Clarks Beach	66.7	12.1	6.3	60.7	Fair	Fair
Waiuku Town Basin	55.6	32.6	26.0	59.9	Poor	New site
Omokoiti Beacon	77.8	5.3	1.4	55.0	Poor	Good
Grahams Beach	77.8	6.5	3.3	54.9	Poor	Fair
Hoteo River mouth	77.8	9.7	5.5	54.6	Poor	Fair
Waimarie Road	77.8	6.5	9.1	54.6	Poor	Good
Chelsea	77.8	3.1	14.7	54.3	Poor	Poor
Makarau Estuary	77.8	14.4	11.0	53.9	Poor	Fair
Shag Point	77.8	21.3	12.9	52.8	Poor	Poor
Kaipara Heads	88.9	4.0	1.3	48.6	Poor	Fair
Henderson Creek	77.8	6.8	44.8	48.0	Poor	Fair
Paremoremo Ski Club	77.8	9.6	47.3	47.1	Poor	Good
Puketutu Point	77.8	34.9	34.4	46.9	Poor	Poor
Wairoa River Mouth	88.9	10.0	26.2	46.2	Poor	Poor
Confluence	88.9	14.8	25.9	45.9	Poor	Fair
Weymouth	88.9	27.2	20.3	45.1	Poor	Poor
Kaipara River	88.9	32.8	26.0	43.3	Poor	Poor
Mangere Bridge	88.9	43.7	37.3	38.9	Poor	Poor
Rarawaru Creek	100.0	16.7	30.7	38.8	Poor	Poor
Panmure	100.0	21.4	40.3	36.6	Poor	Poor
Lucas Creek	100.0	15.7	45.1	36.0	Poor	Fair
Rangitopuni Creek	100.0	21.9	44.3	35.6	Poor	Poor
Brighams Creek	100.0	22.8	60.9	31.1	Poor	Poor

4.3 Data tables

Table 4-2 Electrical conductivity ($\text{mS}\cdot\text{cm}^{-1}$) for data collected from January 2012 to December 2012.

Site	Count	Min	Max	Median	Mean	Standard error
Goat Island	12	51.62	53.69	53.04	52.85	0.18
Ti Point	12	51.32	53.75	53.02	52.93	0.19
Dawsons Creek	12	41.50	52.30	50.31	49.29	0.95
Mahurangi Heads	12	48.88	53.68	52.44	52.22	0.37
Orewa	12	50.15	53.79	52.52	52.33	0.30
Browns Bay	12	48.78	53.51	52.37	52.04	0.37
Chelsea	12	49.33	53.08	51.07	51.12	0.32
Whau Creek	12	44.00	52.63	48.86	48.45	0.77
Henderson Creek	12	43.12	52.33	48.22	47.94	0.76
Hobsonville Jetty	12	46.22	52.72	49.68	49.64	0.58
Lucas Creek	12	23.21	51.29	43.33	42.34	2.14
Waimarie Road	12	39.06	51.86	47.22	46.41	1.14
Paremoremo Ski Club	12	36.56	51.13	45.00	44.57	1.29
Rawawaru Creek	12	28.19	50.42	43.18	42.02	1.88
Confluence	12	31.47	50.59	44.62	43.56	1.62
Brighams Creek	12	23.95	49.81	39.04	39.51	2.20
Rangitopuni Creek	12	21.87	49.21	31.11	34.13	2.82
Tamaki	12	46.57	52.84	51.15	50.56	0.56
Panmure	12	27.82	49.50	46.19	43.71	2.01
Turanga Estuary	12	44.53	52.88	51.64	50.84	0.73
Wairoa River	12	0.46	52.00	50.21	45.27	4.18
Mangere Bridge	12	7.71	50.52	47.29	43.69	3.36
Puketutu Point	12	0.00	51.41	48.89	41.24	5.08
Weymouth	12	7.94	51.43	47.88	43.77	3.42
Waiuku Town Basin	5	0.00	49.76	45.11	29.58	10.62
Clarks Beach	12	7.93	51.75	50.08	46.28	3.52
Grahams Beach	12	8.09	51.94	50.80	47.18	3.56
Shag Point	12	8.08	51.66	50.01	46.40	3.50
Manukau Heads	12	8.19	51.89	51.37	47.69	3.59
Kaipara Heads	12	51.15	52.98	52.45	52.11	0.18
Tauhoa Channel	12	46.58	51.05	49.83	49.42	0.43
Hoteo River mouth	12	39.41	50.59	47.25	46.47	1.04
Omokoiti Beacon	12	46.66	51.47	49.75	49.49	0.44
Makarau Estuary	12	30.84	50.38	47.91	46.30	1.52
Shelly Beach	12	43.99	50.69	48.75	48.23	0.63
Kaipara River	12	38.96	50.53	47.70	46.88	0.95

Table 4-3 Salinity (ppt) for data collected from January 2012 to December 2012.

Site	Count	Min	Max	Median	Mean	Standard error
Goat Island	12	33.92	35.53	35.02	34.88	0.14
Ti Point	12	33.69	35.58	35.00	34.94	0.14
Dawsons Creek	12	26.60	34.49	33.00	32.26	0.69
Mahurangi Heads	12	31.90	35.52	34.61	34.41	0.28
Orewa	12	32.82	35.59	34.67	34.48	0.23
Browns Bay	12	31.82	35.39	34.54	34.27	0.29
Chelsea	12	32.25	35.07	33.57	33.59	0.25
Whau Creek	12	28.39	34.73	31.95	31.63	0.57
Henderson Creek	12	27.77	34.51	31.45	31.27	0.56
Hobsonville Jetty	12	29.98	34.80	32.54	32.51	0.43
Lucas Creek	12	14.08	33.73	27.97	27.30	1.50
Waimarie Road	12	24.89	34.16	30.75	30.18	0.82
Paremoremo Ski Club	12	23.15	33.61	29.13	28.85	0.93
Rawawaru Creek	12	17.41	33.09	27.86	27.06	1.33
Confluence	12	19.63	33.21	28.89	28.14	1.15
Brighams Creek	12	14.57	32.64	24.89	25.29	1.54
Rangitopuni Creek	12	13.20	32.20	19.39	21.58	1.97
Tamaki	12	30.26	34.90	33.59	33.18	0.41
Panmure	12	17.16	32.42	29.93	28.26	1.42
Turanga Estuary	12	28.76	34.93	33.97	33.39	0.54
Wairoa River	12	0.22	34.26	32.96	29.63	2.76
Mangere Bridge	12	7.71	33.19	30.77	28.65	1.98
Puketutu Point	12	0.00	33.84	31.92	27.16	3.19
Weymouth	12	7.94	33.86	31.13	28.72	2.03
Waiuku Town Basin	5	0.00	32.64	29.23	19.79	6.66
Clarks Beach	12	7.93	34.09	32.80	30.54	2.09
Grahams Beach	12	8.09	34.23	33.37	31.20	2.11
Shag Point	12	8.08	34.03	32.78	30.63	2.07
Manukau Heads	12	8.19	34.20	33.82	31.58	2.13
Kaipara Heads	12	33.61	35.01	34.57	34.33	0.14
Tauhoa Channel	12	30.23	33.56	32.64	32.35	0.32
Hoteo River mouth	12	25.10	33.23	30.74	30.21	0.76
Omokoiti Beacon	12	30.28	33.87	32.56	32.40	0.33
Makarau Estuary	12	19.17	33.08	31.22	30.11	1.08
Shelly Beach	12	28.35	33.31	31.82	31.48	0.46
Kaipara River	12	24.79	33.19	31.06	30.50	0.69

Table 4-4 pH (pH units) for data collected from January 2012 to December 2012.

Site	Count	Min	Max	Median	Mean	Standard error
Goat Island	12	7.37	8.11	7.86	7.87	0.06
Ti Point	12	7.81	8.19	8.06	8.03	0.03
Dawsons Creek	12	7.86	8.22	7.98	7.99	0.03
Mahurangi Heads	12	7.85	8.24	8.07	8.06	0.03
Orewa	12	7.91	8.28	8.08	8.09	0.03
Browns Bay	12	7.83	8.32	8.10	8.09	0.03
Chelsea	12	7.87	8.30	7.96	7.99	0.04
Whau Creek	12	7.86	8.18	7.99	8.00	0.03
Henderson Creek	12	7.75	8.18	7.95	7.97	0.03
Hobsonville Jetty	12	7.82	8.23	7.97	7.99	0.03
Lucas Creek	12	7.75	8.10	7.88	7.89	0.03
Waimarie Road	12	7.38	8.11	7.91	7.89	0.05
Paremoremo Ski Club	12	7.55	8.08	7.88	7.87	0.04
Rawawaru Creek	12	7.63	8.00	7.84	7.83	0.03
Confluence	12	7.66	8.08	7.86	7.86	0.03
Brighams Creek	12	7.61	8.00	7.81	7.79	0.04
Rangitopuni Creek	12	7.50	7.91	7.77	7.75	0.04
Tamaki	12	7.86	8.13	8.03	8.01	0.03
Panmure	12	7.72	8.08	8.00	7.97	0.03
Turanga Estuary	12	7.82	8.23	8.09	8.07	0.03
Wairoa River	12	7.86	8.23	8.09	8.09	0.03
Mangere Bridge	12	7.71	8.48	8.01	8.02	0.06
Puketutu Point	12	7.82	8.39	8.08	8.05	0.04
Weymouth	12	7.25	8.16	7.95	7.92	0.07
Waiuku Town Basin	5	0.00	8.11	7.86	6.33	1.58
Clarks Beach	12	7.89	8.14	8.02	8.01	0.02
Grahams Beach	12	7.97	8.18	8.08	8.08	0.02
Shag Point	12	7.94	8.29	8.10	8.10	0.03
Manukau Heads	12	7.99	8.36	8.11	8.12	0.03
Kaipara Heads	12	8.03	8.24	8.13	8.13	0.02
Tauhoa Channel	12	7.99	8.24	8.10	8.11	0.02
Hoteo River mouth	12	7.95	8.21	8.10	8.09	0.02
Omokoiti Beacon	12	7.94	8.21	8.07	8.07	0.02
Makarau Estuary	12	7.93	8.16	8.04	8.04	0.02
Shelly Beach	12	7.83	8.25	8.03	8.04	0.04
Kaipara River	12	7.46	8.19	7.86	7.83	0.07

Table 4-5 Turbidity (NTU) for data collected from January 2012 to December 2012.

Site	Count	Min	Max	Median	Mean	Standard error
Goat Island	12	0.23	2.44	0.40	0.60	0.17
Ti Point	12	0.34	1.60	0.67	0.75	0.11
Dawsons Creek	12	2.30	13.00	5.16	5.75	0.75
Mahurangi Heads	12	1.00	2.30	1.52	1.54	0.11
Orewa	12	0.55	3.80	1.50	1.61	0.25
Browns Bay	12	0.70	2.02	1.11	1.22	0.13
Chelsea	12	1.60	6.20	4.16	4.19	0.42
Whau Creek	12	1.10	8.97	3.84	4.20	0.61
Henderson Creek	12	2.02	9.04	6.70	5.80	0.73
Hobsonville Jetty	12	2.00	8.30	3.80	4.31	0.57
Lucas Creek	12	3.20	53.60	8.85	12.45	3.87
Waimarie Road	12	1.90	10.00	5.58	5.73	0.65
Paremoremo Ski Club	12	1.70	14.00	7.01	6.90	0.90
Rawawaru Creek	12	2.80	12.00	7.69	7.41	0.68
Confluence	12	2.20	11.00	6.07	6.42	0.77
Brighams Creek	12	2.90	20.30	7.91	8.42	1.21
Rangitopuni Creek	12	4.30	12.00	7.35	7.56	0.62
Tamaki	12	1.60	5.80	3.15	3.26	0.38
Panmure	12	2.80	24.00	8.58	9.56	1.67
Turanga Estuary	12	1.40	9.10	2.93	3.41	0.55
Wairoa River	12	2.90	11.00	3.69	5.00	0.84
Mangere Bridge	12	3.41	14.00	9.80	9.68	0.95
Puketutu Point	12	2.57	9.90	4.45	5.22	0.77
Weymouth	12	3.42	16.00	8.79	9.44	1.15
Waiuku Town Basin	5	9.90	19.00	10.00	12.38	1.76
Clarks Beach	12	1.70	12.00	6.05	6.37	0.85
Grahams Beach	12	2.56	7.90	4.63	4.83	0.56
Shag Point	12	1.91	13.00	3.90	5.23	0.91
Manukau Heads	12	1.39	8.24	2.69	3.34	0.53
Kaipara Heads	12	1.24	3.10	1.70	1.76	0.15
Tauhoa Channel	12	1.20	4.80	2.34	2.37	0.30
Hoteo River mouth	12	1.10	13.00	5.69	5.98	0.90
Omokoiti Beacon	12	0.90	9.10	2.68	3.38	0.65
Makarau Estuary	12	1.90	28.00	6.48	8.82	2.08
Shelly Beach	12	3.00	11.00	5.40	5.91	0.70
Kaipara River	12	8.80	40.00	14.50	17.91	3.10

Table 4-6 Suspended sediment (mg/L) for data collected from January 2012 to December 2012.

Site	Count	Min	Max	Median	Mean	Standard error
Goat Island	12	1.00	12.00	3.60	4.68	0.97
Ti Point	12	1.20	11.00	4.10	4.35	0.76
Dawsons Creek	12	5.80	26.00	11.50	13.80	1.75
Mahurangi Heads	12	2.20	12.00	5.90	6.31	0.82
Orewa	12	4.60	13.00	6.55	7.03	0.72
Browns Bay	12	2.90	13.00	6.25	6.21	0.76
Chelsea	12	4.60	20.00	11.00	11.29	1.26
Whau Creek	12	3.40	28.00	9.70	11.21	2.09
Henderson Creek	12	4.80	30.00	13.50	14.25	2.05
Hobsonville Jetty	12	4.70	29.00	8.90	11.46	2.02
Lucas Creek	12	5.60	60.00	17.00	20.21	4.09
Waimarie Road	12	4.70	29.00	12.00	12.74	1.87
Paremoremo Ski Club	12	4.30	26.00	14.50	14.51	1.76
Rawawaru Creek	12	4.70	26.00	14.00	14.67	1.76
Confluence	12	4.50	28.00	12.50	13.81	1.80
Brighams Creek	12	4.10	23.00	14.50	14.36	1.56
Rangitopuni Creek	12	5.30	21.00	13.50	13.23	1.41
Tamaki	12	5.40	15.00	8.50	8.95	0.86
Panmure	12	6.80	52.00	19.00	20.49	3.54
Turanga Estuary	12	4.60	21.00	8.10	10.33	1.49
Wairoa River	12	6.30	33.00	9.50	12.37	2.29
Mangere Bridge	12	9.70	43.00	26.00	26.81	2.94
Puketutu Point	12	6.00	49.00	13.00	16.78	3.45
Weymouth	12	10.00	54.00	27.00	27.92	4.07
Waiuku Town Basin	5	22.00	65.00	29.00	34.80	7.90
Clarks Beach	12	7.30	40.00	21.50	20.24	2.49
Grahams Beach	12	9.00	27.00	15.00	15.48	1.69
Shag Point	12	6.80	33.00	16.50	17.27	2.79
Manukau Heads	12	4.60	23.00	9.85	10.39	1.39
Kaipara Heads	12	3.30	11.00	6.20	6.61	0.69
Tauhoa Channel	12	4.00	32.00	7.50	10.26	2.56
Hoteo River mouth	12	3.60	58.00	12.50	15.84	4.20
Omokoiti Beacon	12	6.00	24.00	9.30	10.27	1.37
Makarau Estuary	12	6.40	39.00	16.00	19.20	3.03
Shelly Beach	12	6.90	31.00	14.50	16.63	2.11
Kaipara River	12	18.00	93.00	30.50	40.17	6.64

Table 4-7 Chlorophyll a (mg/L) for data collected from January 2012 to December 2012.

Site	Count	Min	Max	Median	Mean	Standard error
Goat Island	12	0.001	0.004	0.001	0.001	0.000
Ti Point	12	0.001	0.005	0.001	0.002	0.000
Dawsons Creek	12	0.001	0.005	0.002	0.003	0.000
Mahurangi Heads	12	0.001	0.002	0.001	0.001	0.000
Orewa	12	0.001	0.003	0.001	0.001	0.000
Browns Bay	12	0.001	0.004	0.002	0.002	0.000
Chelsea	12	0.001	0.004	0.002	0.002	0.000
Whau Creek	12	0.001	0.003	0.002	0.002	0.000
Henderson Creek	12	0.001	0.003	0.002	0.002	0.000
Hobsonville Jetty	12	0.001	0.004	0.002	0.002	0.000
Lucas Creek	12	0.002	0.005	0.003	0.003	0.000
Waimarie Road	12	0.001	0.004	0.003	0.003	0.000
Paremoremo Ski Club	12	0.001	0.005	0.003	0.003	0.000
Rawawaru Creek	12	0.001	0.005	0.002	0.003	0.000
Confluence	12	0.001	0.005	0.003	0.003	0.000
Brighams Creek	12	0.001	0.013	0.004	0.005	0.001
Rangitopuni Creek	12	0.001	0.007	0.003	0.003	0.001
Tamaki	12	0.001	0.003	0.002	0.002	0.000
Panmure	12	0.001	0.005	0.003	0.003	0.000
Turanga Estuary	12	0.001	0.003	0.002	0.002	0.000
Wairoa River	12	0.001	0.004	0.002	0.002	0.000
Mangere Bridge	12	0.001	0.020	0.004	0.005	0.001
Puketutu Point	12	0.001	0.019	0.003	0.005	0.001
Weymouth	12	0.001	0.014	0.003	0.005	0.001
Waiuku Town Basin	5	0.003	0.015	0.005	0.007	0.002
Clarks Beach	12	0.001	0.006	0.003	0.003	0.000
Grahams Beach	12	0.002	0.004	0.003	0.003	0.000
Shag Point	12	0.002	0.006	0.004	0.004	0.000
Manukau Heads	12	0.001	0.005	0.002	0.002	0.000
Kaipara Heads	12	0.001	0.007	0.002	0.002	0.000
Tauhoa Channel	12	0.002	0.006	0.003	0.003	0.000
Hoteo River mouth	12	0.001	0.007	0.003	0.003	0.000
Omokoiti Beacon	12	0.001	0.005	0.003	0.003	0.000
Makarau Estuary	12	0.002	0.009	0.003	0.004	0.001
Shelly Beach	12	0.002	0.007	0.003	0.004	0.000
Kaipara River	12	0.003	0.012	0.005	0.006	0.001

Table 4-8 Nitrite (mg N/L) for data collected from January 2012 to December 2012.

Site	Count	Min	Max	Median	Mean	Standard error
Goat Island	12	0.001	0.010	0.001	0.003	0.001
Ti Point	12	0.001	0.010	0.001	0.002	0.001
Dawsons Creek	12	0.001	0.001	0.001	0.001	NA
Mahurangi Heads	12	0.001	0.001	0.001	0.001	NA
Orewa	12	0.001	0.001	0.001	0.001	NA
Browns Bay	12	0.001	0.001	0.001	0.001	NA
Chelsea	12	0.001	0.002	0.001	0.001	0.000
Whau Creek	12	0.001	0.001	0.001	0.001	NA
Henderson Creek	12	0.001	0.002	0.001	0.001	0.000
Hobsonville Jetty	12	0.001	0.002	0.001	0.001	0.000
Lucas Creek	12	0.001	0.004	0.001	0.002	0.000
Waimarie Road	12	0.001	0.003	0.001	0.001	0.000
Paremoremo Ski Club	12	0.001	0.003	0.001	0.001	0.000
Rawawaru Creek	12	0.001	0.003	0.001	0.001	0.000
Confluence	12	0.001	0.003	0.001	0.001	0.000
Brighams Creek	12	0.001	0.006	0.001	0.002	0.000
Rangitopuni Creek	12	0.001	0.004	0.001	0.002	0.000
Tamaki	12	0.001	0.001	0.001	0.001	NA
Panmure	12	0.001	0.005	0.001	0.002	0.000
Turanga Estuary	12	0.001	0.003	0.001	0.001	0.000
Wairoa River	12	0.001	0.008	0.001	0.002	0.001
Mangere Bridge	12	0.001	0.021	0.012	0.011	0.002
Puketutu Point	12	0.001	0.054	0.010	0.013	0.004
Weymouth	12	0.001	0.006	0.004	0.004	0.001
Waiuku Town Basin	5	0.001	0.008	0.005	0.004	0.001
Clarks Beach	12	0.001	0.006	0.003	0.003	0.001
Grahams Beach	12	0.001	0.006	0.001	0.002	0.000
Shag Point	12	0.001	0.009	0.004	0.004	0.001
Manukau Heads	12	0.001	0.008	0.001	0.002	0.001
Kaipara Heads	12	0.001	0.002	0.001	0.001	0.000
Tauhoa Channel	12	0.001	0.003	0.001	0.001	0.000
Hoteo River mouth	12	0.001	0.002	0.001	0.001	0.000
Omokoiti Beacon	12	0.001	0.003	0.001	0.001	0.000
Makarau Estuary	12	0.001	0.004	0.001	0.002	0.000
Shelly Beach	12	0.001	0.004	0.001	0.002	0.000
Kaipara River	12	0.001	0.005	0.001	0.002	0.000

Table 4-9 Nitrate (mg N/L) for data collected from January 2012 to December 2012.

Site	Count	Min	Max	Median	Mean	Standard error
Goat Island	12	0.001	0.065	0.017	0.022	0.006
Ti Point	12	0.001	0.055	0.006	0.013	0.005
Dawsons Creek	12	0.001	0.045	0.006	0.014	0.005
Mahurangi Heads	12	0.001	0.021	0.004	0.006	0.002
Orewa	12	0.001	0.024	0.006	0.007	0.002
Browns Bay	12	0.001	0.022	0.004	0.007	0.002
Chelsea	12	0.001	0.015	0.007	0.007	0.001
Whau Creek	12	0.001	0.030	0.008	0.011	0.003
Henderson Creek	12	0.001	0.040	0.008	0.012	0.004
Hobsonville Jetty	12	0.001	0.023	0.005	0.008	0.002
Lucas Creek	12	0.001	0.220	0.012	0.041	0.018
Waimarie Road	12	0.001	0.063	0.009	0.021	0.006
Paremoremo Ski Club	12	0.003	0.078	0.015	0.029	0.008
Rawawaru Creek	12	0.003	0.130	0.029	0.046	0.012
Confluence	12	0.004	0.130	0.021	0.033	0.011
Brighams Creek	12	0.008	0.390	0.041	0.102	0.034
Rangitopuni Creek	12	0.010	0.290	0.067	0.118	0.031
Tamaki	12	0.004	0.028	0.009	0.013	0.003
Panmure	12	0.004	0.240	0.040	0.069	0.021
Turanga Estuary	12	0.001	0.072	0.007	0.012	0.006
Wairoa River	12	0.001	0.220	0.007	0.033	0.019
Mangere Bridge	12	0.006	0.360	0.205	0.197	0.030
Puketutu Point	12	0.007	0.570	0.230	0.247	0.045
Weymouth	12	0.005	0.370	0.099	0.118	0.030
Waiuku Town Basin	5	0.011	0.650	0.140	0.201	0.116
Clarks Beach	12	0.007	0.150	0.032	0.041	0.012
Grahams Beach	12	0.001	0.061	0.013	0.020	0.005
Shag Point	12	0.004	0.150	0.084	0.074	0.014
Manukau Heads	12	0.001	0.052	0.013	0.015	0.004
Kaipara Heads	12	0.001	0.034	0.004	0.008	0.003
Tauhoa Channel	12	0.001	0.040	0.005	0.009	0.003
Hoteo River mouth	12	0.001	0.070	0.010	0.018	0.006
Omokoiti Beacon	12	0.001	0.031	0.006	0.008	0.002
Makarau Estuary	12	0.001	0.120	0.007	0.021	0.010
Shelly Beach	12	0.001	0.043	0.006	0.013	0.004
Kaipara River	12	0.001	0.077	0.007	0.019	0.007

Table 4-10 Ammonia (mg N/L) for data collected from January 2012 to December 2012.

Site	Count	Min	Max	Median	Mean	Standard error
Goat Island	12	0.003	0.017	0.003	0.004	0.001
Ti Point	12	0.003	0.015	0.003	0.004	0.001
Dawsons Creek	12	0.003	0.023	0.003	0.005	0.002
Mahurangi Heads	12	0.003	0.017	0.003	0.004	0.001
Orewa	12	0.003	0.015	0.003	0.005	0.001
Browns Bay	12	0.003	0.018	0.003	0.005	0.002
Chelsea	12	0.003	0.020	0.003	0.007	0.002
Whau Creek	12	0.003	0.030	0.003	0.009	0.003
Henderson Creek	12	0.003	0.030	0.003	0.009	0.003
Hobsonville Jetty	12	0.003	0.023	0.003	0.008	0.002
Lucas Creek	12	0.003	0.057	0.010	0.017	0.005
Waimarie Road	12	0.003	0.026	0.005	0.010	0.003
Paremoremo Ski Club	12	0.003	0.050	0.008	0.014	0.004
Rawawaru Creek	12	0.003	0.046	0.010	0.015	0.004
Confluence	12	0.003	0.035	0.008	0.014	0.004
Brighams Creek	12	0.003	0.400	0.016	0.054	0.032
Rangitopuni Creek	12	0.003	0.053	0.022	0.025	0.005
Tamaki	12	0.003	0.044	0.014	0.016	0.004
Panmure	12	0.003	0.100	0.039	0.034	0.008
Turanga Estuary	12	0.003	0.023	0.003	0.006	0.002
Wairoa River	12	0.003	0.027	0.013	0.013	0.003
Mangere Bridge	12	0.003	0.140	0.090	0.086	0.011
Puketutu Point	12	0.003	0.180	0.072	0.073	0.013
Weymouth	12	0.003	0.085	0.036	0.035	0.007
Waiuku Town Basin	5	0.003	0.065	0.023	0.032	0.012
Clarks Beach	12	0.003	0.052	0.018	0.022	0.005
Grahams Beach	12	0.003	0.026	0.006	0.011	0.003
Shag Point	12	0.003	0.051	0.031	0.029	0.004
Manukau Heads	12	0.003	0.016	0.004	0.007	0.002
Kaipara Heads	12	0.003	0.009	0.003	0.003	0.001
Tauhoa Channel	12	0.003	0.014	0.003	0.004	0.001
Hoteo River mouth	12	0.003	0.048	0.010	0.015	0.005
Omokoiti Beacon	12	0.003	0.040	0.003	0.007	0.003
Makarau Estuary	12	0.003	0.083	0.009	0.019	0.008
Shelly Beach	12	0.003	0.055	0.009	0.015	0.005
Kaipara River	12	0.003	0.061	0.016	0.019	0.005

Table 4-11 Total kjedahl nitrogen (mg N/L) for data collected from January 2012 to December 2012.

Site	Count	Min	Max	Median	Mean	Standard error
Goat Island	12	0.000	0.050	0.010	0.017	0.005
Ti Point	12	0.000	0.050	0.010	0.013	0.004
Dawsons Creek	12	0.010	0.130	0.053	0.053	0.011
Mahurangi Heads	12	0.010	0.057	0.010	0.015	0.004
Orewa	12	0.010	0.046	0.010	0.013	0.003
Browns Bay	12	0.010	0.066	0.010	0.015	0.005
Chelsea	12	0.010	0.110	0.010	0.030	0.009
Whau Creek	12	0.021	0.110	0.041	0.054	0.008
Henderson Creek	12	0.010	0.094	0.056	0.053	0.008
Hobsonville Jetty	12	0.010	0.120	0.034	0.039	0.009
Lucas Creek	12	0.010	0.200	0.105	0.108	0.016
Waimarie Road	12	0.030	0.140	0.066	0.071	0.010
Paremoremo Ski Club	12	0.010	0.480	0.084	0.133	0.037
Rawawaru Creek	12	0.021	0.280	0.090	0.115	0.021
Confluence	12	0.058	0.280	0.081	0.108	0.019
Brighams Creek	12	0.039	5.700	0.145	0.627	0.462
Rangitopuni Creek	12	0.087	0.440	0.170	0.200	0.032
Tamaki	12	0.010	0.210	0.076	0.079	0.015
Panmure	12	0.059	0.370	0.150	0.171	0.025
Turanga Estuary	12	0.010	0.130	0.010	0.039	0.013
Wairoa River	12	0.010	0.220	0.060	0.071	0.017
Mangere Bridge	12	0.076	0.460	0.250	0.229	0.032
Puketutu Point	12	0.029	0.370	0.140	0.161	0.031
Weymouth	12	0.010	0.220	0.092	0.107	0.019
Waiuku Town Basin	5	0.130	0.310	0.130	0.200	0.043
Clarks Beach	12	0.010	0.110	0.061	0.061	0.011
Grahams Beach	12	0.010	0.080	0.025	0.034	0.007
Shag Point	12	0.010	0.180	0.079	0.076	0.015
Manukau Heads	12	0.010	0.032	0.010	0.015	0.002
Kaipara Heads	12	0.010	0.088	0.010	0.017	0.007
Tauhoa Channel	12	0.010	0.047	0.023	0.024	0.004
Hoteo River mouth	12	0.010	0.110	0.063	0.068	0.010
Omokoiti Beacon	12	0.010	0.064	0.029	0.032	0.006
Makarau Estuary	12	0.010	0.240	0.088	0.099	0.016
Shelly Beach	12	0.010	0.110	0.074	0.070	0.008
Kaipara River	12	0.010	0.220	0.120	0.128	0.016

Table 4-12 Total nitrogen (by calculation, mg N/L) for data collected from January 2012 to December 2012.

Site	Count	Min	Max	Median	Mean	Standard error
Goat Island	12	0.000	0.050	0.010	0.018	0.005
Ti Point	12	0.000	0.050	0.010	0.017	0.005
Dawsons Creek	12	0.010	0.170	0.062	0.065	0.014
Mahurangi Heads	12	0.010	0.078	0.010	0.018	0.006
Orewa	12	0.010	0.060	0.010	0.017	0.004
Browns Bay	12	0.010	0.088	0.010	0.020	0.007
Chelsea	12	0.010	0.120	0.024	0.036	0.009
Whau Creek	12	0.034	0.093	0.046	0.058	0.007
Henderson Creek	12	0.010	0.110	0.072	0.070	0.010
Hobsonville Jetty	12	0.010	0.130	0.040	0.045	0.010
Lucas Creek	12	0.040	0.390	0.115	0.148	0.029
Waimarie Road	12	0.035	0.200	0.074	0.093	0.015
Paremoremo Ski Club	12	0.038	0.540	0.089	0.162	0.042
Rawawaru Creek	12	0.092	0.390	0.120	0.161	0.029
Confluence	12	0.071	0.410	0.109	0.143	0.027
Brighams Creek	12	0.110	5.700	0.210	0.730	0.455
Rangitopuni Creek	12	0.110	0.670	0.310	0.320	0.055
Tamaki	12	0.010	0.220	0.085	0.093	0.016
Panmure	12	0.083	0.610	0.215	0.240	0.042
Turanga Estuary	12	0.010	0.190	0.010	0.048	0.017
Wairoa River	12	0.010	0.450	0.069	0.103	0.035
Mangere Bridge	12	0.260	0.670	0.455	0.437	0.041
Puketutu Point	12	0.200	0.990	0.370	0.418	0.066
Weymouth	12	0.120	0.600	0.185	0.231	0.039
Waiuku Town Basin	5	0.110	0.970	0.300	0.370	0.155
Clarks Beach	12	0.042	0.260	0.097	0.105	0.017
Grahams Beach	12	0.010	0.099	0.054	0.052	0.009
Shag Point	12	0.069	0.280	0.115	0.157	0.021
Manukau Heads	12	0.010	0.077	0.024	0.027	0.006
Kaipara Heads	12	0.010	0.093	0.010	0.018	0.007
Tauhoa Channel	12	0.010	0.053	0.031	0.034	0.004
Hoteo River mouth	12	0.010	0.180	0.082	0.085	0.014
Omokoiti Beacon	12	0.010	0.069	0.041	0.039	0.006
Makarau Estuary	12	0.010	0.360	0.110	0.120	0.024
Shelly Beach	12	0.022	0.120	0.095	0.085	0.008
Kaipara River	12	0.010	0.220	0.150	0.148	0.016

Table 4-13 Total phosphorus (mg/L) for data collected from January 2012 to December 2012.

Site	Count	Min	Max	Median	Mean	Standard error
Goat Island	12	0.006	0.019	0.011	0.011	0.001
Ti Point	12	0.007	0.023	0.011	0.012	0.001
Dawsons Creek	12	0.014	0.034	0.024	0.024	0.002
Mahurangi Heads	12	0.009	0.021	0.016	0.016	0.001
Orewa	12	0.009	0.023	0.017	0.017	0.001
Browns Bay	12	0.012	0.031	0.020	0.021	0.002
Chelsea	12	0.016	0.036	0.022	0.024	0.002
Whau Creek	12	0.017	0.046	0.026	0.027	0.003
Henderson Creek	12	0.019	0.041	0.028	0.028	0.002
Hobsonville Jetty	12	0.017	0.035	0.024	0.025	0.002
Lucas Creek	12	0.017	0.054	0.032	0.033	0.003
Waimarie Road	12	0.018	0.036	0.027	0.028	0.002
Paremoremo Ski Club	12	0.018	0.049	0.031	0.032	0.002
Rawawaru Creek	12	0.018	0.044	0.034	0.034	0.002
Confluence	12	0.018	0.047	0.034	0.033	0.002
Brighams Creek	12	0.015	0.064	0.037	0.036	0.004
Rangitopuni Creek	12	0.020	0.054	0.038	0.036	0.003
Tamaki	12	0.018	0.035	0.025	0.026	0.002
Panmure	12	0.028	0.066	0.039	0.041	0.003
Turanga Estuary	12	0.019	0.033	0.023	0.024	0.001
Wairoa River	12	0.020	0.056	0.030	0.033	0.003
Mangere Bridge	12	0.086	0.170	0.125	0.127	0.008
Puketutu Point	12	0.063	0.240	0.125	0.132	0.016
Weymouth	12	0.034	0.064	0.043	0.046	0.003
Waiuku Town Basin	5	0.013	0.059	0.051	0.043	0.008
Clarks Beach	12	0.021	0.048	0.033	0.034	0.002
Grahams Beach	12	0.021	0.035	0.028	0.027	0.001
Shag Point	12	0.035	0.084	0.063	0.063	0.005
Manukau Heads	12	0.007	0.035	0.021	0.020	0.002
Kaipara Heads	12	0.007	0.018	0.013	0.012	0.001
Tauhoa Channel	12	0.007	0.042	0.018	0.019	0.002
Hoteo River mouth	12	0.003	0.044	0.030	0.028	0.003
Omokoiti Beacon	12	0.003	0.026	0.019	0.018	0.002
Makarau Estuary	12	0.014	0.046	0.028	0.030	0.003
Shelly Beach	12	0.014	0.037	0.026	0.026	0.002
Kaipara River	12	0.022	0.060	0.045	0.041	0.004

Table 4-14 Soluble reactive phosphorus (mg/L) for data collected from January 2012 to December 2012.

Site	Count	Min	Max	Median	Mean	Standard error
Goat Island	12	0.003	0.014	0.009	0.009	0.001
Ti Point	12	0.006	0.011	0.008	0.008	0.001
Dawsons Creek	12	0.006	0.024	0.010	0.012	0.001
Mahurangi Heads	12	0.005	0.014	0.010	0.009	0.001
Orewa	12	0.006	0.015	0.011	0.010	0.001
Browns Bay	12	0.006	0.022	0.014	0.013	0.001
Chelsea	12	0.003	0.019	0.014	0.013	0.001
Whau Creek	12	0.006	0.020	0.013	0.014	0.001
Henderson Creek	12	0.007	0.021	0.012	0.013	0.001
Hobsonville Jetty	12	0.006	0.024	0.012	0.013	0.001
Lucas Creek	12	0.006	0.019	0.013	0.014	0.001
Waimarie Road	12	0.008	0.020	0.013	0.014	0.001
Paremoremo Ski Club	12	0.009	0.021	0.014	0.015	0.001
Rawawaru Creek	12	0.006	0.024	0.018	0.016	0.002
Confluence	12	0.007	0.021	0.017	0.015	0.001
Brighams Creek	12	0.003	0.024	0.014	0.014	0.002
Rangitopuni Creek	12	0.008	0.023	0.016	0.015	0.002
Tamaki	12	0.010	0.024	0.018	0.017	0.001
Panmure	12	0.011	0.031	0.019	0.021	0.002
Turanga Estuary	12	0.010	0.016	0.013	0.013	0.001
Wairoa River	12	0.006	0.045	0.017	0.018	0.003
Mangere Bridge	12	0.040	0.110	0.082	0.083	0.005
Puketutu Point	12	0.036	0.190	0.098	0.102	0.014
Weymouth	12	0.005	0.050	0.023	0.026	0.004
Waiuku Town Basin	5	0.003	0.024	0.020	0.017	0.004
Clarks Beach	12	0.008	0.024	0.019	0.018	0.001
Grahams Beach	12	0.009	0.023	0.016	0.016	0.001
Shag Point	12	0.006	0.058	0.045	0.043	0.004
Manukau Heads	12	0.005	0.020	0.012	0.012	0.001
Kaipara Heads	12	0.003	0.013	0.007	0.007	0.001
Tauhoa Channel	12	0.005	0.020	0.009	0.009	0.001
Hoteo River mouth	12	0.003	0.018	0.013	0.013	0.001
Omokoiti Beacon	12	0.005	0.012	0.010	0.009	0.001
Makarau Estuary	12	0.008	0.030	0.014	0.016	0.002
Shelly Beach	12	0.008	0.019	0.013	0.013	0.001
Kaipara River	12	0.008	0.030	0.016	0.016	0.002

Table 4-15 Enterococci (MPN/100ml) for data collected from January 2012 to December 2012.

Site	Count	Min	Max	Median	Mean	Standard error
Goat Island	12	5.00	20.00	5.00	6.25	1.25
Ti Point	12	5.00	97.00	5.00	12.67	7.67
Dawsons Creek	12	5.00	460.00	5.00	50.17	37.54
Mahurangi Heads	12	5.00	10.00	5.00	6.67	0.71
Orewa	12	5.00	5.00	5.00	5.00	NA
Browns Bay	12	5.00	20.00	5.00	6.25	1.25
Chelsea	12	5.00	180.00	5.00	26.92	14.56
Whau Creek	12	5.00	5500.00	7.50	730.83	464.47
Henderson Creek	12	5.00	700.00	7.50	117.50	67.97
Hobsonville Jetty	12	5.00	410.00	5.00	45.25	33.43
Lucas Creek	12	5.00	6900.00	15.00	712.83	572.40
Waimarie Road	12	5.00	610.00	7.50	74.42	50.00
Paremoremo Ski Club	12	5.00	10000.00	20.00	939.92	827.46
Rawawaru Creek	12	5.00	1100.00	20.00	212.08	120.33
Confluence	12	5.00	1000.00	5.00	141.42	86.98
Brighams Creek	12	5.00	9800.00	35.50	964.33	807.09
Rangitopuni Creek	12	5.00	2900.00	20.00	372.17	241.24
Tamaki	12	5.00	20.00	5.00	8.75	1.64
Panmure	12	5.00	230.00	10.00	61.75	23.36
Turanga Estuary	12	5.00	41.00	5.00	8.83	2.98
Wairoa River	12	0.00	20.00	5.00	6.67	1.98
Mangere Bridge	12	5.00	20.00	5.00	6.25	1.25
Puketutu Point	12	5.00	10.00	5.00	5.42	0.42
Weymouth	12	5.00	94.00	5.00	12.42	7.42
Waiuku Town Basin	5	5.00	5.00	5.00	5.00	NA
Clarks Beach	12	5.00	10.00	5.00	5.83	0.56
Grahams Beach	12	5.00	5.00	5.00	5.00	NA
Shag Point	12	5.00	5.00	5.00	5.00	NA
Manukau Heads	12	5.00	10.00	5.00	6.25	0.65
Kaipara Heads	12	0.00	0.85	0.85	0.78	0.07
Tauhoa Channel	12	0.85	5.00	0.85	1.96	0.53
Hoteo River mouth	12	0.00	22.00	0.85	2.96	1.75
Omokoiti Beacon	12	0.00	0.85	0.85	0.78	0.07
Makarau Estuary	12	0.00	540.00	0.85	47.82	44.76
Shelly Beach	12	0.00	17.00	0.85	2.47	1.37
Kaipara River	12	0.00	72.00	0.85	8.23	5.91

Table 4-16 Dissolve oxygen (% saturation) for data collected from January 2012 to December 2012.

Site	Count	Min	Max	Median	Mean	Standard error
Goat Island	12	96.60	110.10	100.15	101.08	1.06
Ti Point	12	97.50	109.90	102.40	102.45	1.01
Dawsons Creek	12	88.10	98.80	94.15	94.15	0.77
Mahurangi Heads	12	93.90	104.00	98.60	98.50	0.71
Orewa	12	94.60	104.30	100.30	99.99	0.85
Browns Bay	12	95.10	105.90	99.90	100.38	0.88
Chelsea	12	94.30	102.20	96.65	97.46	0.80
Whau Creek	12	88.10	104.90	95.75	96.25	1.38
Henderson Creek	12	87.80	102.30	95.05	95.48	1.13
Hobsonville Jetty	12	92.50	104.50	96.95	97.43	0.99
Lucas Creek	12	78.40	104.30	90.90	90.88	2.18
Waimarie Road	12	86.50	104.40	93.55	93.83	1.43
Paremoremo Ski Club	12	80.90	105.40	92.60	91.58	1.95
Rawawaru Creek	12	77.50	103.40	92.35	90.93	2.23
Confluence	12	77.20	103.10	91.85	90.77	2.11
Brighams Creek	12	74.20	105.00	91.45	89.79	2.62
Rangitopuni Creek	12	74.00	103.10	92.05	90.32	2.56
Tamaki	12	88.70	100.60	94.75	95.01	1.12
Panmure	12	75.70	96.60	92.80	90.11	1.65
Turanga Estuary	12	94.20	105.80	98.95	98.80	0.87
Wairoa River	12	90.90	103.30	98.10	97.80	1.05
Mangere Bridge	12	91.90	140.80	95.20	99.07	3.84
Puketutu Point	12	94.40	126.20	99.75	101.84	2.53
Weymouth	12	92.60	112.80	96.60	97.69	1.52
Waiuku Town Basin	5	0.00	106.10	95.50	78.04	19.65
Clarks Beach	12	93.40	106.00	97.05	97.68	1.11
Grahams Beach	12	96.60	103.50	100.30	100.33	0.54
Shag Point	12	95.50	114.70	100.80	101.62	1.45
Manukau Heads	12	98.90	104.00	101.30	101.47	0.42
Kaipara Heads	12	100.90	107.70	103.70	103.78	0.62
Tauhoa Channel	12	98.70	107.00	100.90	101.03	0.63
Hoteo River mouth	12	96.40	101.50	98.10	98.47	0.49
Omokoiti Beacon	12	98.20	107.50	100.55	101.28	0.78
Makarau Estuary	12	94.50	103.40	99.85	99.32	0.74
Shelly Beach	12	95.30	105.50	99.10	99.51	0.87
Kaipara River	12	96.10	110.70	98.15	99.60	1.10

Table 4-17 Dissolved oxygen (ppm) for data collected from January 2012 to December 2012.

Site	Count	Min	Max	Median	Mean	Standard error
Goat Island	12	7.26	8.88	7.89	7.96	0.13
Ti Point	12	7.32	8.56	8.21	8.05	0.12
Dawsons Creek	12	6.65	8.86	7.40	7.51	0.19
Mahurangi Heads	12	7.01	8.50	7.67	7.78	0.16
Orewa	12	7.04	8.75	7.74	7.89	0.17
Browns Bay	12	7.09	9.12	7.69	7.95	0.19
Chelsea	12	6.88	8.98	7.88	7.77	0.19
Whau Creek	12	6.26	9.93	8.09	7.86	0.28
Henderson Creek	12	6.29	9.40	7.81	7.76	0.24
Hobsonville Jetty	12	6.64	9.40	7.84	7.83	0.22
Lucas Creek	12	5.59	9.88	7.53	7.57	0.35
Waimarie Road	12	6.17	9.64	7.56	7.64	0.28
Paremoremo Ski Club	12	5.78	9.86	7.71	7.52	0.32
Rawawaru Creek	12	5.53	9.72	7.48	7.54	0.34
Confluence	12	5.51	9.77	7.49	7.50	0.34
Brighams Creek	12	5.30	10.18	7.61	7.57	0.40
Rangitopuni Creek	12	5.29	10.62	8.16	7.86	0.43
Tamaki	12	6.28	8.83	7.54	7.61	0.24
Panmure	12	5.61	8.62	7.45	7.46	0.25
Turanga Estuary	12	7.01	9.03	7.70	7.89	0.20
Wairoa River	12	6.77	9.46	7.75	7.97	0.26
Mangere Bridge	12	6.83	10.69	7.77	8.06	0.31
Puketutu Point	12	7.55	9.56	8.46	8.35	0.19
Weymouth	12	6.89	8.92	7.89	7.96	0.19
Waiuku Town Basin	5	0.00	8.15	7.62	6.21	1.56
Clarks Beach	12	6.86	9.14	7.81	7.88	0.21
Grahams Beach	12	7.30	8.89	7.92	8.06	0.16
Shag Point	12	7.16	9.15	8.03	8.15	0.18
Manukau Heads	12	7.44	8.89	8.13	8.11	0.14
Kaipara Heads	12	7.64	9.09	8.22	8.27	0.13
Tauhoa Channel	12	7.39	9.04	8.02	8.14	0.17
Hoteo River mouth	12	7.22	8.89	7.77	8.06	0.19
Omokoiti Beacon	12	7.32	8.93	8.14	8.16	0.16
Makarau Estuary	12	7.47	8.96	7.91	8.14	0.17
Shelly Beach	12	7.22	8.96	7.93	8.08	0.20
Kaipara River	12	7.27	9.45	7.82	8.14	0.21

Table 4-18 Summary table of temperature (°C) for data collected from January 2012 to December 2012.

Site	Count	Min	Max	Median	Mean	Standard error
Goat Island	12	13.62	20.61	16.37	16.78	0.70
Ti Point	12	13.77	20.75	16.54	16.87	0.70
Dawsons Creek	12	11.16	22.38	17.36	17.16	0.99
Mahurangi Heads	12	12.71	21.59	17.05	16.90	0.86
Orewa	12	12.34	21.90	17.08	16.93	0.89
Browns Bay	12	12.09	21.63	16.90	16.81	0.90
Chelsea	12	11.79	21.41	16.39	16.70	0.89
Whau Creek	12	9.50	22.33	15.73	16.24	1.05
Henderson Creek	12	10.68	21.98	16.09	16.52	0.97
Hobsonville Jetty	12	11.36	21.75	16.30	16.69	0.93
Lucas Creek	12	10.36	22.44	16.35	16.74	1.02
Waimarie Road	12	10.95	22.26	16.39	16.85	0.98
Paremoremo Ski Club	12	10.66	22.39	16.56	16.89	1.02
Rawawaru Creek	12	10.69	22.65	17.02	17.05	1.03
Confluence	12	10.48	22.55	16.53	16.87	1.04
Brighams Creek	12	10.02	22.74	16.57	16.85	1.08
Rangitopuni Creek	12	9.24	22.84	16.70	16.51	1.15
Tamaki	12	12.20	22.58	16.01	16.68	0.99
Panmure	12	11.88	22.40	15.82	16.55	1.03
Turanga Estuary	12	10.88	21.85	17.28	16.74	0.94
Wairoa River	12	10.85	22.02	17.38	16.92	0.97
Mangere Bridge	12	11.42	21.24	16.85	16.48	1.06
Puketutu Point	12	11.71	21.47	17.01	16.46	1.05
Weymouth	12	11.83	21.31	16.64	16.42	1.00
Waiuku Town Basin	5	0.00	19.67	15.88	14.03	3.60
Clarks Beach	12	11.97	21.44	16.73	16.45	1.00
Grahams Beach	12	12.36	20.66	16.62	16.38	0.93
Shag Point	12	12.09	21.11	16.81	16.62	1.04
Manukau Heads	12	12.98	20.09	16.12	16.44	0.75
Kaipara Heads	12	13.49	19.13	15.91	16.37	0.58
Tauhoa Channel	12	12.59	20.06	16.94	16.48	0.81
Hoteo River mouth	12	12.12	20.43	17.37	16.41	0.95
Omokoiti Beacon	12	12.48	20.52	16.80	16.48	0.86
Makarau Estuary	12	12.06	20.80	16.99	16.38	0.95
Shelly Beach	12	12.09	20.80	17.20	16.45	0.94
Kaipara River	12	11.89	20.88	17.10	16.41	0.95

5.0 References

- APHA (2005). Standard methods for the examination of water and wastewater 21st edition. American Public Health Association, American Waterworks Association, Water Environment Federation.
- APHA (2012). Standard methods for the examination of water and wastewater 22nd edition. American Public Health Association, American Waterworks Association, Water Environment Federation.
- Auckland Council, (2012). The Auckland Plan. Auckland Council.
- Auckland Regional Council, (2009). State of the Auckland Region-2009. Auckland Regional Council, 21 Pitt Street, Auckland. 300 pages.
- Canadian Council of Ministers of the Environment (2001). Canadian water quality guidelines for the protection of aquatic life: CCME water quality index 1.0, Technical Report. In *Canadian Environmental Quality Guidelines*, 1999, Canadian Council of Ministers of the Environment, Winnipeg.
- Carbines, M.J., Walker, J.W., Cameron, M.J. and Vaughan, M (2013). Marine monitoring plan. Auckland Council technical report, TR2013/025
- Scarsbrook, M. (2008). Saline Water Quality State and Trends in the Auckland Region. Prepared for the Auckland Regional Council by the National Institute of Water and Atmospheric Research, Hamilton. ARC Technical Report (TR 2008/005), 21 Pitt Street, Auckland. 54 pages.
- Walker, J and Vaughan, M (2013a). Marine water quality annual report 2010. Auckland Council technical report, TR2013/030
- Walker, J and Vaughan, M (2013b). Marine water quality annual report 2011. Auckland Council technical report, TR2013/031
- Wilcock, R. J., Kemp, C.L.S. (2001). Water Quality Surveys of Mahurangi Harbour, Upper Waitemata Harbour and Tamaki Estuary 1992-2001. Prepared for the ARC by the National Institute of Water and Atmospheric Research, Hamilton. ARC technical publication, TP191.
- Vant, W.N., Lee, D.E. (1998). Review of Auckland Regional Council's saline long-term baseline programme. Prepared for the ARC by the National Institute of Water and Atmospheric Research, Hamilton. NIWA Client Report No. ARC80239

6.0 Acknowledgements

The Auckland Council saline water quality monitoring programme has benefitted from the efforts of numerous people since its inception in 1987.

During the 2012 sampling season, special thanks to Peter Williams for organising the sampling and we acknowledge the efforts of other members of the RIMU Environmental Science and Environmental Monitoring teams.

Laboratory analyses were carried out by Watercare Laboratory Services Ltd.

Appendix A Physico-chemical measures

Table A- 1 Summary of marine water quality parameters, detection limits, analytical methods and two sources of data collection.

Parameter	Unit	Detection Limit	Method	Source
Dissolved oxygen	ppm	0.1	Handheld meter (YSI-556)	Field
Dissolved oxygen saturation	% sat	0.01	Handheld meter (YSI-556)	Field
Temperature	°C	0.1	Handheld meter (YSI-556)	Field
Conductivity	(mS cm)	0.1	Handheld meter (YSI-556)	Field
Salinity	ppt	0.01	Handheld meter (YSI-556)	Field
pH	pH units	0.01	Handheld meter (YSI-556)	Field
Suspended sediment	mg/L	0.2	APHA (2012) 2540 D	Lab
Turbidity	NTU	0.1	APHA (2012) 2130 B (modified)	Lab
Chlorophyll a	mg/L	0.0006	APHA (2012) 10200 H (modified)	Lab
Nitrate nitrogen (NO ₃)	mg/L	0.002	Calculation (NNN - NO ₂)	Lab
Nitrite nitrogen (NO ₂)	mg/L	0.002	APHA (2012) 4500-NO ₂ B (modified)	Lab
Ammoniacal nitrogen (NH ₄ -N)	mg/L	0.005	APHA (2012) 4500-NH ₃ G (modified)	Lab
Total kjeldahl nitrogen (TKN)	mg N /L	0.02	APHA (2012) 4500-org A, D Modified	Lab
Total nitrogen (TN)	mg N /L	0.02	APHA (2012) 4500-P J, 4500-NO ₃ F (modified)	Lab
Soluble reactive phosphorus	mg/L	0.0006	APHA (2012) 4500-P B, F Mod	Lab
Total phosphorus	mg/L	0.005	APHA (2012) 4500-P B,J (modified)	Lab
Enterococci	MPN/100ml	10	APHA (2005) 9230A & 9230D	Lab

Appendix B Water Quality Indices

The communication of water quality data is often hampered by the volume of results and the complexity of the information. In this report, a water quality index developed by the Canadian Council of Ministers for the Environment (CCME) (2001) was applied to the marine water quality data collected by Auckland Council to enable improved understanding and communication of the work.

The CCME approach uses water quality results to produce four water quality indices, and these indices can be used to assign a water quality class to each monitoring site. The four indices are;

- Scope – This represents the percentage of parameters that failed to meet the objective at least once during the time period under consideration (the lower this index, the better).
- Frequency – This represents the percentage of all individual tests that failed to meet the objective during the time period under consideration (the lower this index, the better).
- Magnitude – This represents the amount by which failed tests exceeded the objective (the lower this index, the better). This is based on the collective amount by which individual tests are out of compliance with the objectives and is scaled to be between 1 and 100. This is the most complex part of the index derivation and the reader is referred to CCME (2001) for full details.
- WQI – This represents an overall water quality index based on a combination of the three indices described above. It is calculated thus;

$$WQI = 100 - \left[\frac{\sqrt{Scope^2 + Frequency^2 + Magnitude^2}}{1.732} \right]$$

The divisor 1.732 normalises the resultant values to a range between 0 and 100, where 0 represents the “worst” water quality and 100 represents the “best” water quality.

The WQI index is used by Auckland Council to assign a water quality class to each site using the following ranges;

- Greater than 90 = excellent water quality
- Between 75 and 90 = good water quality
- Between 60 and 75 = fair water quality
- Lower than 60 = poor water quality

The above indices are calculated for each site based on seven water quality parameters presented in Table B-1. The objectives against which the water quality data are tested (Table B-1) are derived from the ranges observed at six reference sites (Goat Island, Ti Point, Mahurangi Heads, Orewa, Browns Bay and Hobsonville) over the five years preceding this report (2008 to 2012). It was considered thresholds based on a fixed period, whilst providing consistency, would not capture longer term trends in water quality, nor account for improvements in the measurement of parameters (for example, improved meter performance or improvements in detection limits).

The ranges at these reference sites were used, as this represents the best achievable water quality in the Auckland region. Therefore, the index represents the deviation from “natural” conditions in the Auckland region, rather than indicating whether the water quality is suitable for a particular purpose.

Table B- 1 The seven water quality parameters, and their objectives, used to produce the water quality indices.

Dissolved oxygen (% saturation)	greater than 78%
pH	Between 7.6 and 8.3
Turbidity	Less than 7.7 NTU
Ammoniacal nitrogen	Less than 0.089 mg N l ⁻¹
Total suspended sediment	Less than 25 mg l ⁻¹
Total phosphorus	Less than 0.062 mg P l ⁻¹
Nitrate + nitrite nitrogen	Less than 0.105 mg N l ⁻¹