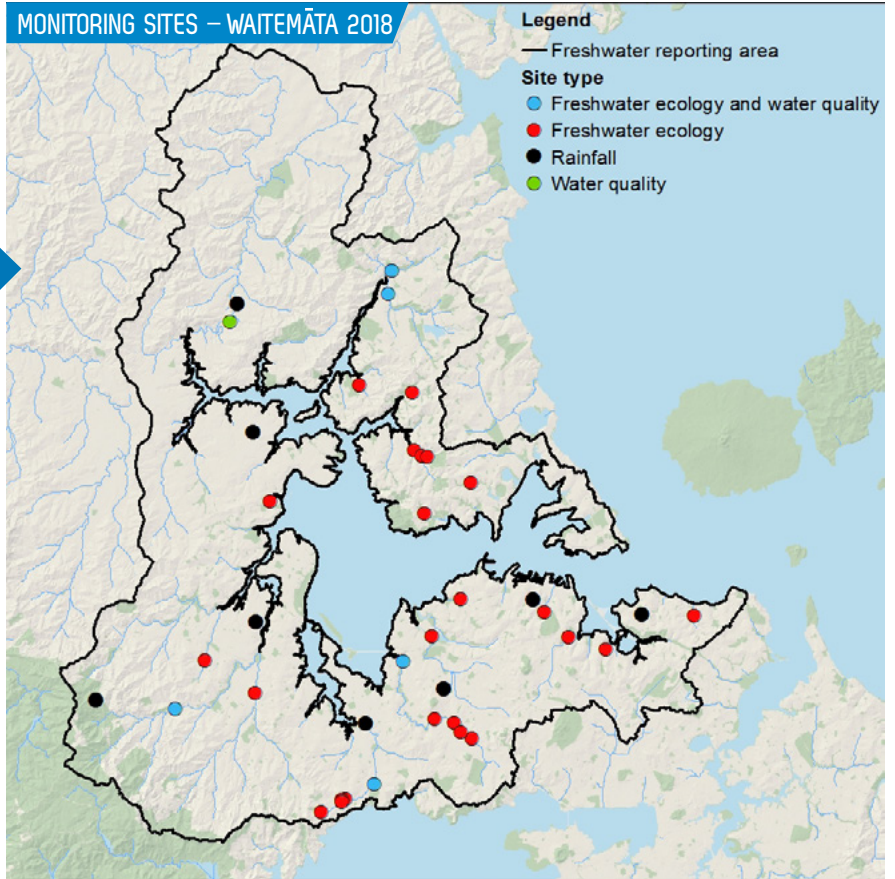


# WAITEMATĀ REPORTING AREA 2018

Includes Waitemātā, Waitākere Ranges, Whau, Albert-Eden, Kaipātiki, Upper Harbour, Puketāpapa, Henderson-Massey, Rodney and Devonport-Takapuna local boards



## STATE OF AUCKLAND FRESHWATER REPORT CARD

### WATER QUALITY



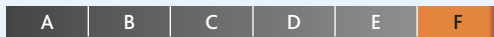
### HYDROLOGY



### HABITAT QUALITY



### BIODIVERSITY



The grades are made up of the following indicators:

**Water quality:** Water samples are tested for a range of parameters including temperature, pH, dissolved oxygen, nutrients and E. coli. The results for each site are compared against reference sites for Auckland to produce a water quality index.

**Hydrology:** Stream reaches are assessed for how well connected they are to upstream and downstream reaches, and the floodplain.

**Habitat quality:** The diversity and quality of habitats both in the streams and in the riparian margins is assessed.

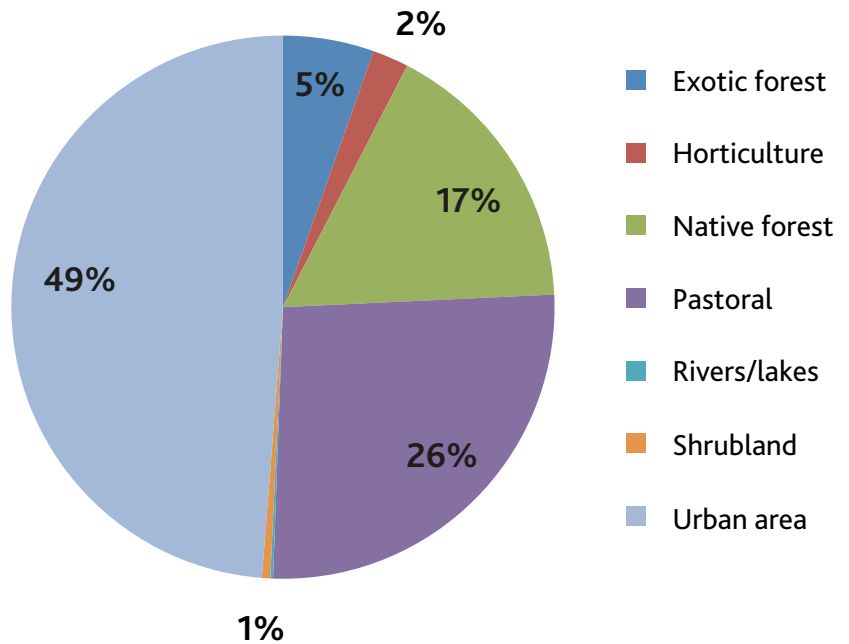
**Biodiversity:** Field assessments are made to determine the type and amount of native plants and animals. Stream macroinvertebrate samples are also collected to assess the diversity and tolerance levels of the macroinvertebrate community.

Each indicator is made up of several parameters. These grades represent a summary of indicator results from 2016 and 2017 from individual sites which are amalgamated for each reporting area to provide an indicator grade.

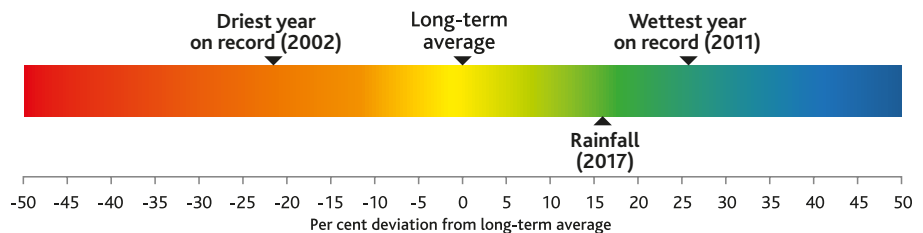
These report cards are not designed to track trends or report on National Policy Statement for Freshwater (NPS-FM) attributes which relate to specific parameters and bands. Note that grades given to amalgamated results or indicators here do not relate to the grades assigned to individual parameters in the NPS-FM.

More detailed analyses on sites and trends are presented in technical reports available on Knowledge Auckland.

### WAITEMATĀ LAND COVER



### WAITEMATĀ RAINFALL



Mean rainfall in 2017 (1602 mm) was 17 per cent greater than the long-term average (1372 mm). The longest rainfall record in the Waitematā reporting area is 39 years at the Rangitopuni station.

## MONITORING BACKGROUND AND INTERPRETATION

Auckland Council's State of the Environment (SOE) monitoring has been building a record of Auckland's environment for more than 25 years. This information is critical to the effective management of Auckland's natural environment.

The monitoring programme shows there is a strong relationship between the health of the rivers and the type of land cover in the surrounding catchment. Rivers that drain forested catchments (particularly native forests) typically have excellent water quality and ecological health.

The health of rivers in the Waitematā reporting area is considered to be impaired. Urban development has led to a high level of impervious surface in the area, which prevents rainfall from soaking into the ground.

This has follow-on effects for rivers in the area leading to high water temperatures, changes to the natural flow patterns and increased pollution from contaminated stormwater.

### SPOTLIGHT ON WAITEMATĀ

The Healthy Waters and Biosecurity teams at Auckland Council are leading a restoration project at the Waiparuru Stream (Symonds Street Cemetery). The Waitematā Local Board initiated this project with the purpose of making the space more accessible to Aucklanders. A restoration management plan is

currently being developed for the stream and this will allow for the community to contribute to some of the restoration activities. We are ensuring that we account for and minimise potential hazards and develop community activities that will ensure successful restoration in this area.



Waiparuru Stream before any restoration has taken place

### FIND OUT MORE

This report card is part of a series prepared by the Auckland Council's Research and Evaluation Unit, which undertakes monitoring and research to provide information and evidence to inform the council's activities and reporting. More report cards can be found at: [aucklandcouncil.govt.nz/environment](https://aucklandcouncil.govt.nz/environment). The report card series includes reporting on freshwater, terrestrial, marine, air, soil, capacity for growth, demographics and quality of life.

For more information: e-mail [rimu@aucklandcouncil.govt.nz](mailto:rimu@aucklandcouncil.govt.nz) or call us on 09 301 0101.

### GET INVOLVED

Auckland Council provides more than 20 environmental programmes across the region that you can get involved in. To find out more on how you can help visit: [aucklandcouncil.govt.nz](https://aucklandcouncil.govt.nz)