

The times, they are (structurally) ageing

A presentation to the RIMU Symposium

Alison Reid
Senior Researcher

4 July 2017



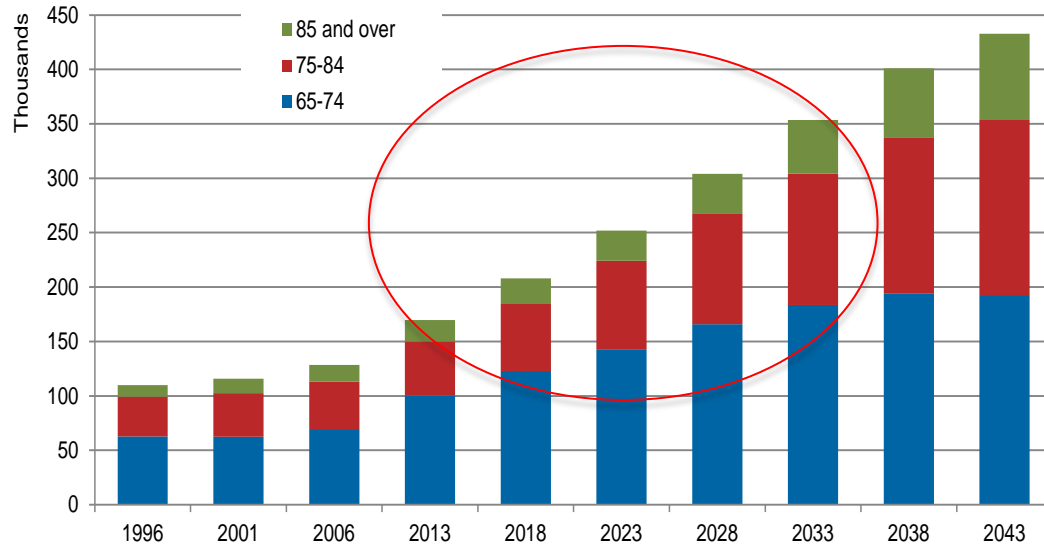


- What is population ageing?
- Why does it matter?
- RIMU report on Status of Older Aucklanders

- Population ageing is the dominant demographic trend in advanced economies across the globe
- There are two aspects to ageing - numerical and structural



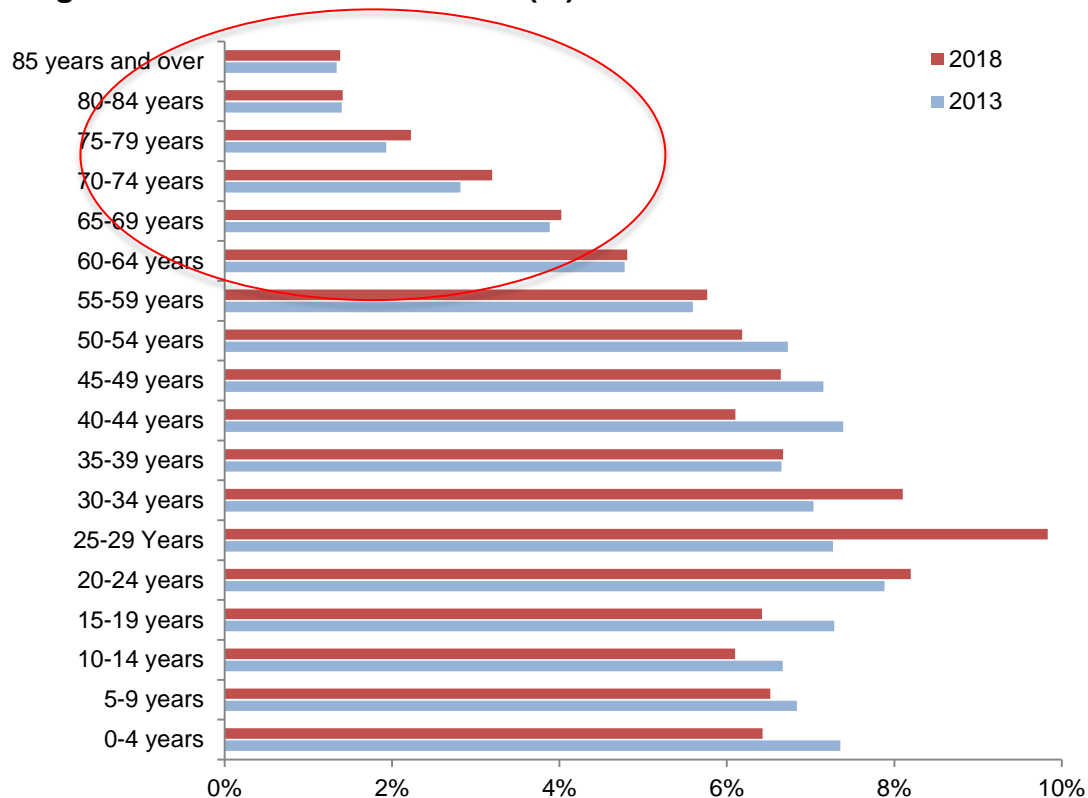
Number of Aucklanders aged 65 and over, 1996 to 2043



Data source: Statistics New Zealand, Census and Statistics New Zealand, subnational population projections 2013(base)-2043 (updated) (medium series projections)

- **Numeric** - anticipated doubling (108%) in number of those aged 65 and over 2013 – 2033
- More than half (55%) of this growth will be among those aged 75 and over

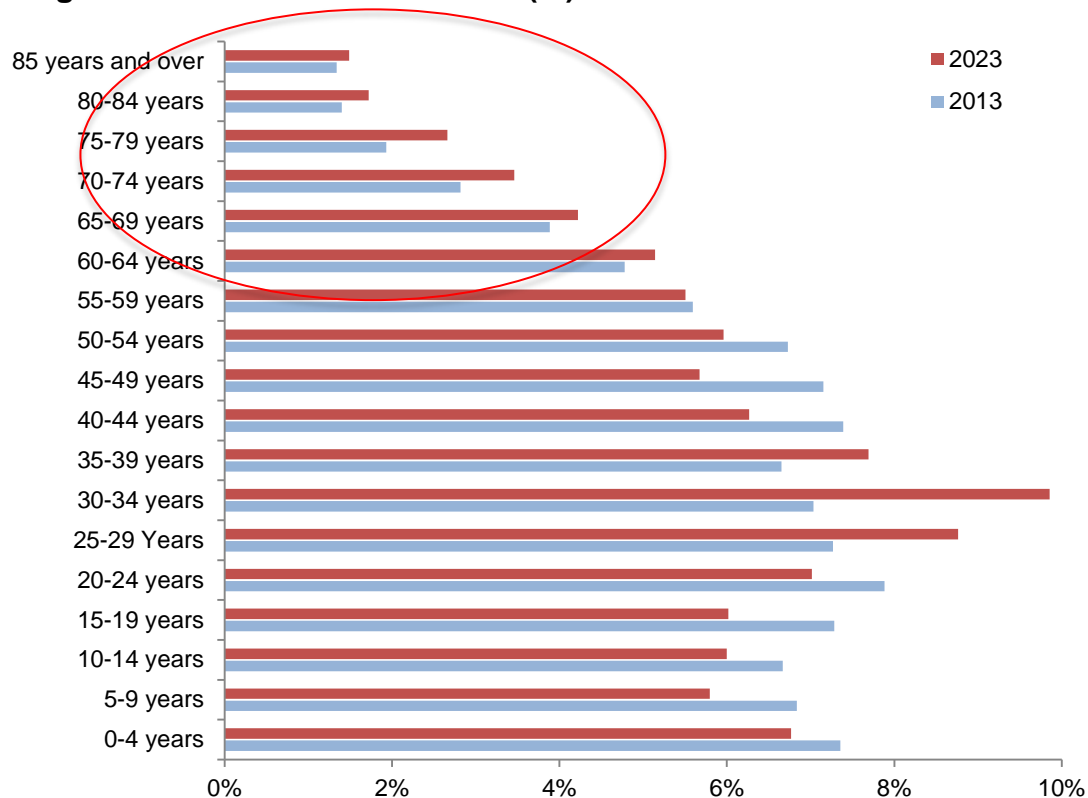
Age distribution of Aucklanders (%)



- **Structural** – 12% in 2013 up to 17% by 2033.

Data source: Statistics New Zealand, subnational population projections 2013(base)-2043 (updated) (medium series projections)

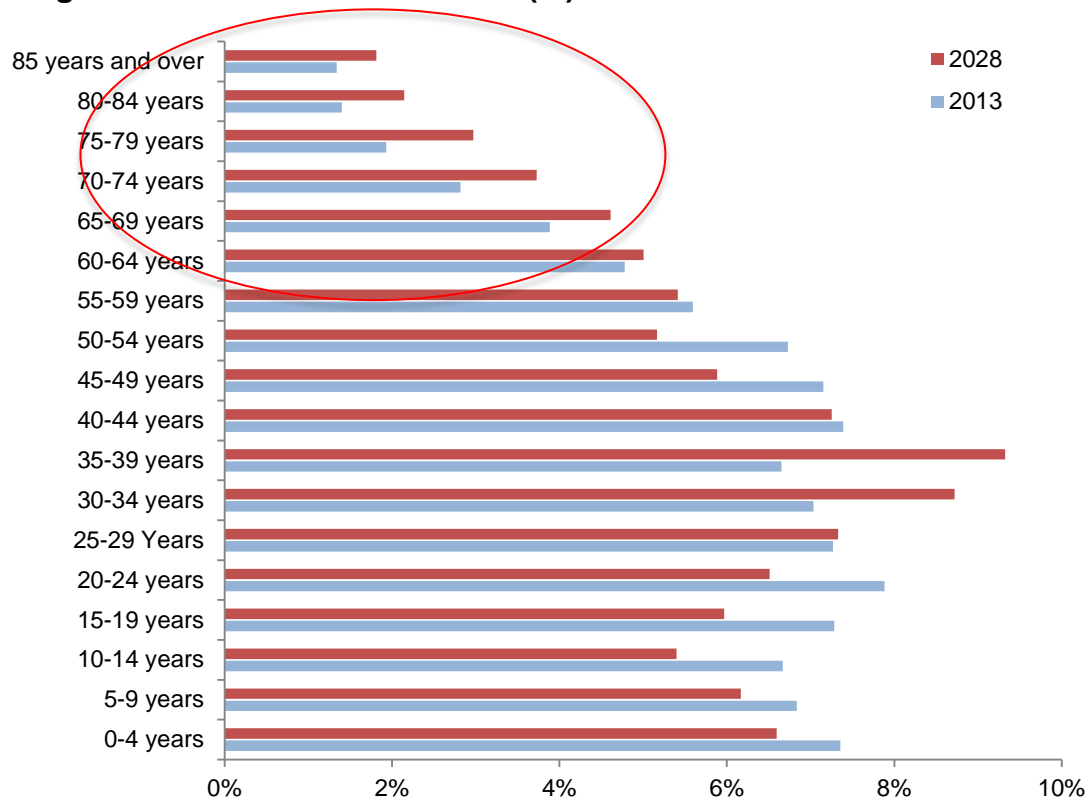
Age distribution of Aucklanders (%)



- **Structural** – 12% in 2013 up to 17% by 2033.

Data source: Statistics New Zealand, subnational population projections 2013(base)-2043 (updated) (medium series projections)

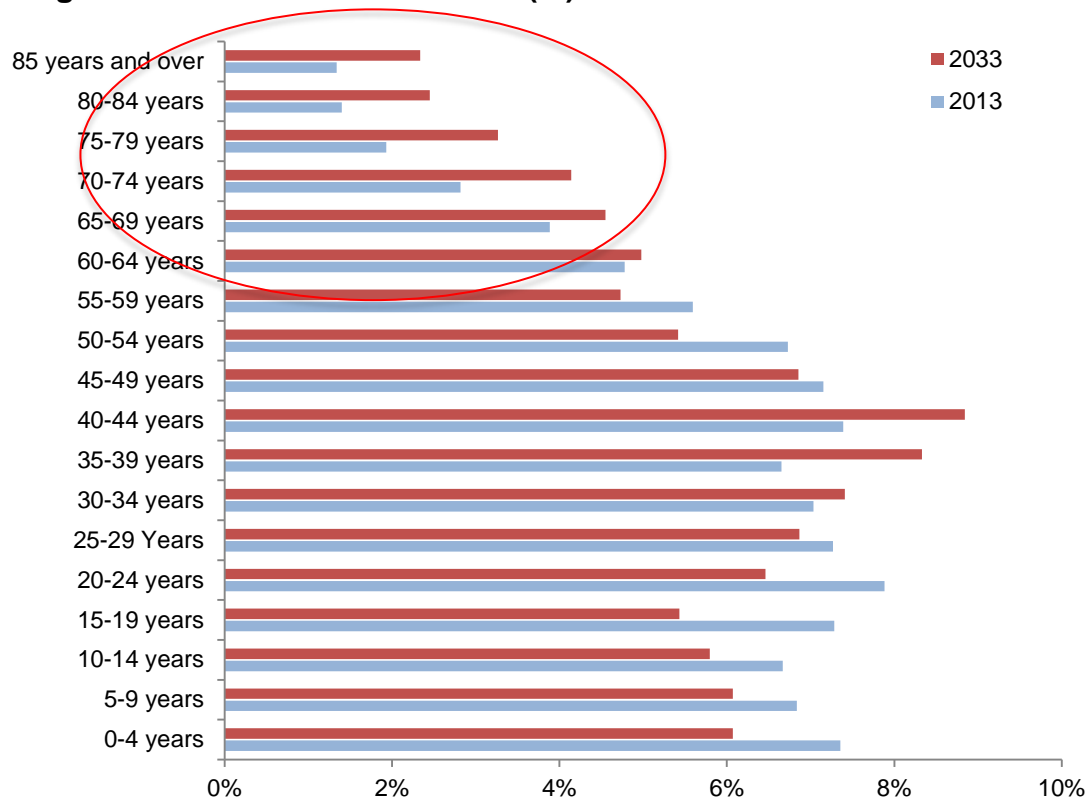
Age distribution of Aucklanders (%)



- **Structural** – 12% in 2013 up to 17% by 2033.

Data source: Statistics New Zealand, subnational population projections 2013(base)-2043 (updated) (medium series projections)

Age distribution of Aucklanders (%)



- **Structural** – 12% in 2013 up to 17% by 2033.

Data source: Statistics New Zealand, subnational population projections 2013(base)-2043 (updated) (medium series projections)

- Numerical ageing drives demand (eg pensions, healthcare)
- Structural ageing is the constraining factor (fiscally and physically)

From Jackson, N.O . (2011) *The demographic forces shaping New Zealand's future, What population ageing [really] means*, NIDEA Working Papers No 1, University of Waikato, National Institute of Demographic and Economic Analysis



- What are the challenges, and the opportunities, of increasing numbers and greater proportions of older citizens, voters, consumers, employers, employees, tenants, service users and of course, older tourists?
- How will an ageing population change and impact the social, cultural, economic, political and physical landscape?
- And what is local government's role in this?



Older Aucklanders: A quality of life status report

Auckland Council Technical Report 2017/014

Eight broad domains:

1. Housing
2. Neighbourhood
3. Transport
4. Social connectedness
5. Health and care
6. Status within society
7. Culture and identity
8. Economic standard of living.

- More than 40 indicators and associated measures.

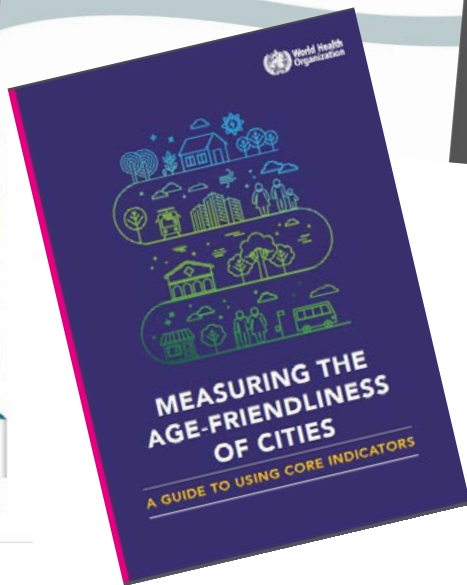
Determinants of Wellbeing for Older Aucklanders

December 2016

Technical Report 2016/047



POSITIVE AGEING INDICATORS 2007



Survey of Aucklanders Aged 65+



About this survey

Unique ID:

Thank you for taking part in this important survey. The survey measures what life is like for you in Auckland. Your answers are confidential and will not be tied back to you. The survey will take approximately 15 minutes. It is important that you complete the survey in full and be as honest as you can in your responses.

Completing the survey

Please answer each question by either placing a tick in the appropriate circle (e.g.) or writing your answer into the space provided.

If you have any questions about the survey OR if you would prefer to book a time to complete the survey over the phone, please contact Michael at Gravitas on (09) 917 0961 Mon-Fri between 8.30am and 5.00pm.

Once you have completed the survey

Fold up the questionnaire when finished and post back to Gravitas Research using the postage paid envelope included with the questionnaire.

Housing

The following questions ask about your current housing situation.

Q1 What type of home do you currently live in?

Please select one answer

- Standalone house on a section
- Town house, unit or terraced house (houses joined, side by side)
- Apartment
- Lifestyle block or farm homestead
- Rest home
- Retirement Village
- Other (please specify)

Q2 How many bedrooms are in your current home?

Please write in how many

-
- Not applicable – e.g. live in a retirement village or rest home

Q3 Currently, how many people live in your household, including yourself?

Household refers to anyone living in your house/sleep-out/granny flat on the same property. If you live in a retirement village/apartment/hostel, answer with how many people live in your unit

Please write in how many

-
- Not applicable – e.g. live in a retirement village or rest home



- Home ownership levels decreasing
- 17% did not agree that their housing costs were affordable
- 18% did not agree that they can heat their home properly in winter
- 12% agreed home has a problem with damp and mould

Thanks for listening

www.knowledgeauckland.org.nz