

Te Puni Kōkiri: Tāmaki Makaurau Regional Profile 2017

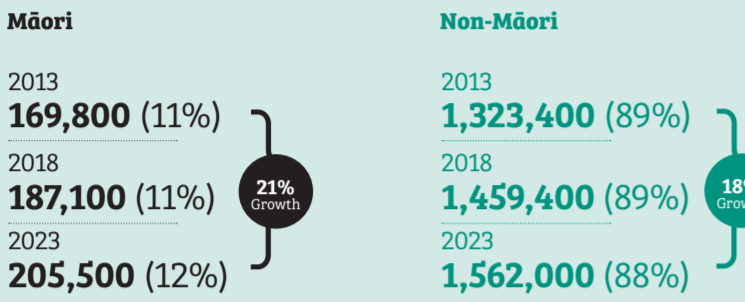
The Tāmaki Makaurau region stretches from the South Kaipara in the north to the southern reaches of the Mānukau Harbour, from Ngāti Whātua in the North to Ngāti Paoa in the South.

Demographics – Structure of Tāmaki Makaurau Population 2013-2023

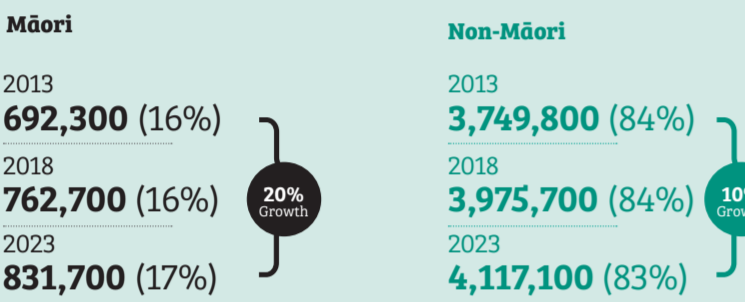
The Māori population will exceed 200,000 by 2023.



Tāmaki Makaurau Population

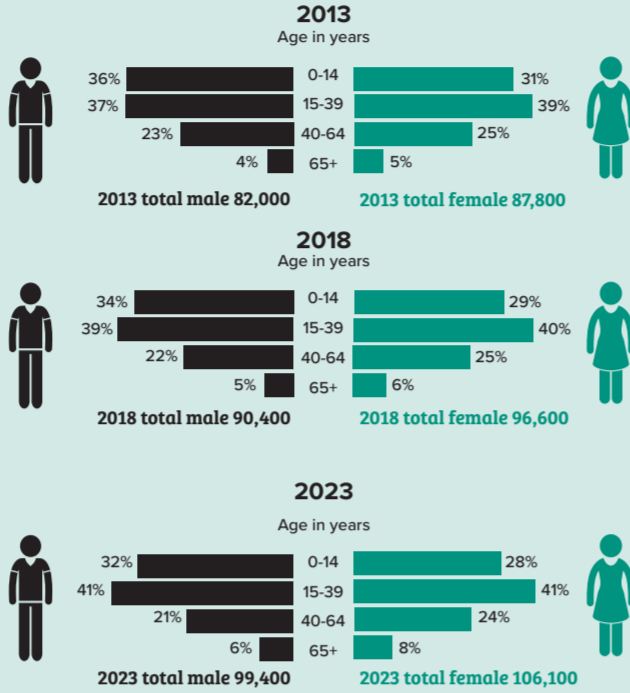


Total New Zealand Population

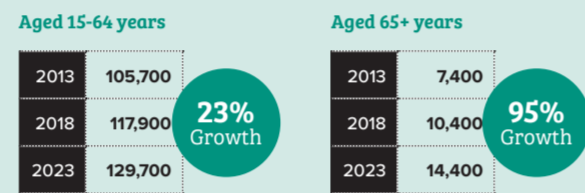


Source: Subnational Ethnic Population Projections: 2013-2038, Stats NZ.
Note: The numbers are calculated by Auckland local boards excluding area outside community and Onehunga-Takaka community.

By 2023, the number of Māori aged 15 to 64 years will grow by 23%.

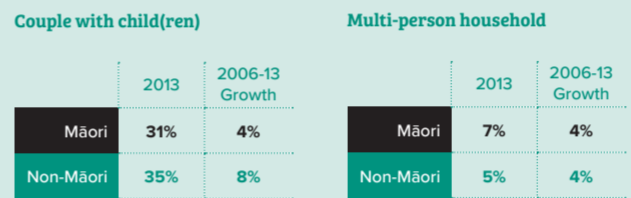
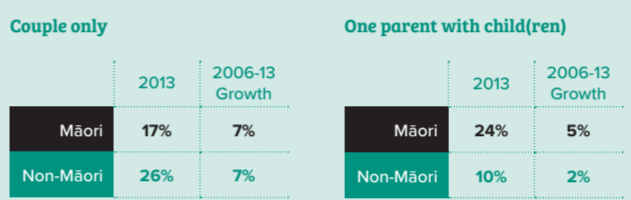
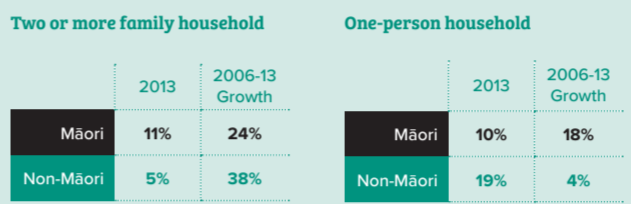


The number of Māori aged 65+ will nearly double.



Source: Subnational Ethnic Population Projections: 2013-2038, Stats NZ.
Note: The numbers are based on medium projections and are calculated by Auckland local boards excluding area outside community and Onehunga-Takaka community.

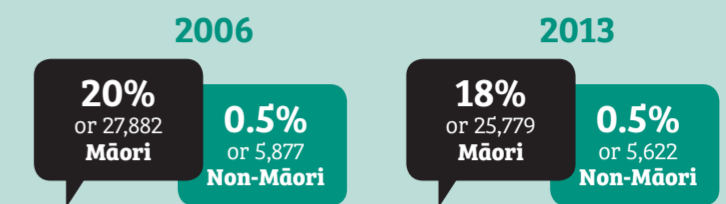
Māori households have increased since 2006. The highest rate of growth was for households with two or more families.



Source: Census, Stats NZ.
Note: 'Couple only', 'One parent with child(ren)' and 'Couple with child(ren)' may also have others in their households.

Whakapapa – te reo Māori and Connection to Iwi in Tāmaki Makaurau

Nearly one in five Māori can speak te reo Māori. This is a slight decline from 2006.



More Māori know their iwi affiliations.



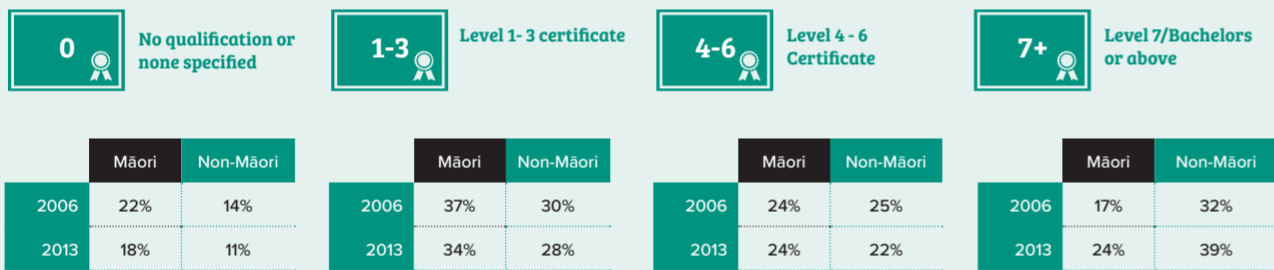
2006-2013 percentage change



Source: Census, Stats NZ.

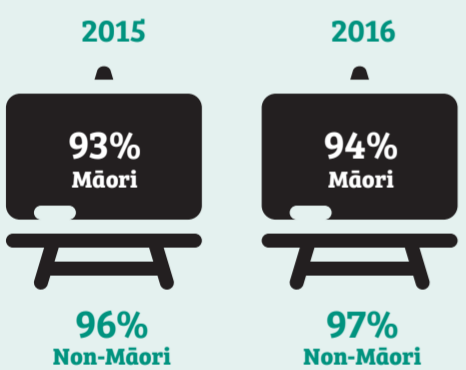
Oranga – Whānau Well-Being & Whānau Housing in Tāmaki Makaurau

More Māori households have higher qualifications at Level 7/Bachelors or above.



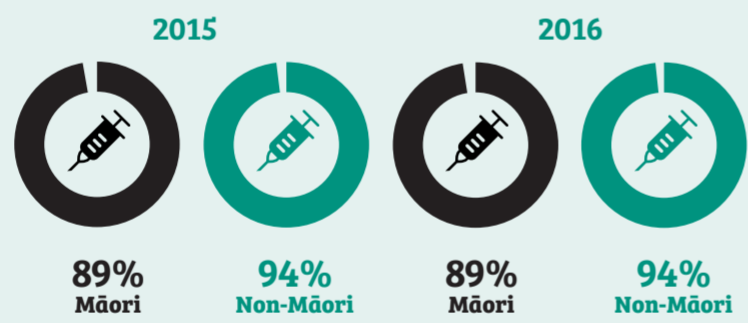
Source: Census, Stats NZ.

Most tamariki Māori have participated in early childhood education.



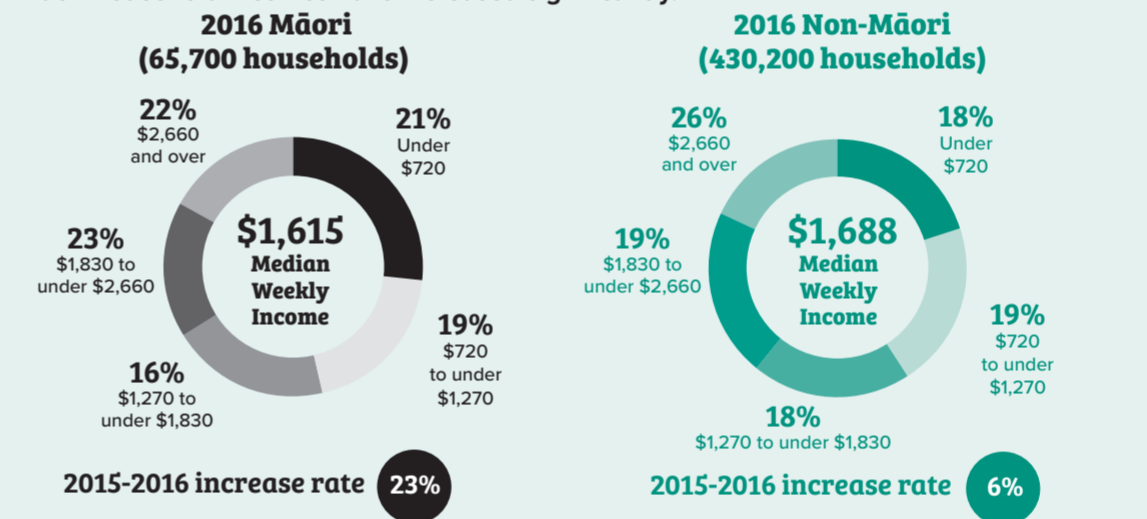
Source: Education Counts, Ministry of Education.
Notes: 1. Government's Better Public Service (BPS) target was to increase participation in early childhood education to 98% by December 2016. 2. Data is calculated by Auckland local boards as at December for each year.

Nearly nine in ten tamariki Māori are immunised.



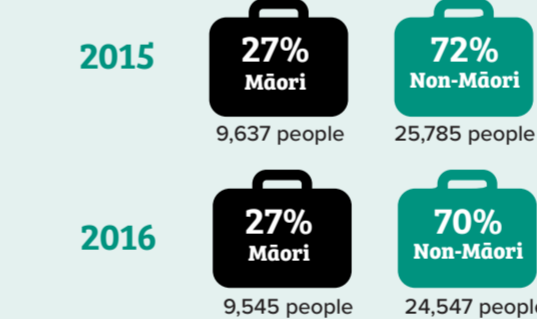
Source: National and DHB Immunisation Data, Ministry of Health.
Notes: 1. Data is calculated by DHB areas including Auckland, Counties Manukau and Waitemata. 2. Data as at December for each year. 3. Government's Better Public Service (BPS) target was to increase infant immunisation rates to 95% by December 2014 and maintain to June 2017.

Māori household incomes have increased significantly.



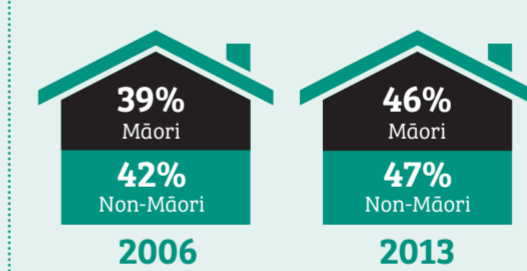
Source: New Zealand Income Survey, Stats NZ.
Note: Data as at June 2016.

The number of Māori receiving Jobseeker Support has decreased slightly.



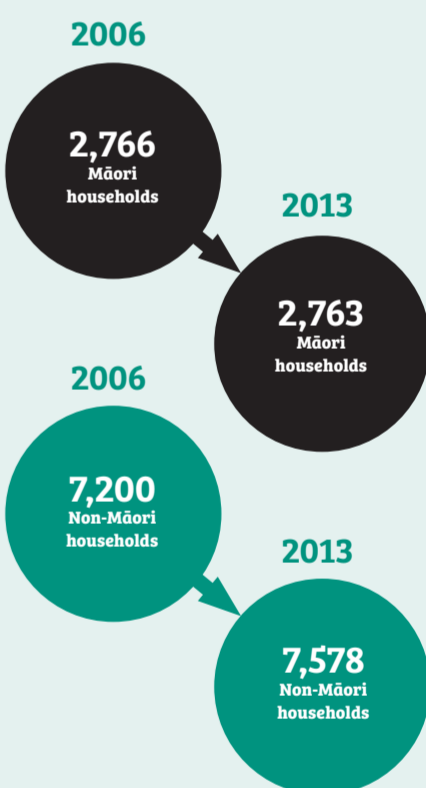
Source: Benefit fact sheets, Ministry of Social Development.
Note: Data is calculated by Auckland regional council as at December for each year.

Fewer than half of Māori rental households are under housing stress.



Source: Census, Stats NZ.
Note: Housing stress refers to a household paying more than 30% of their household income on rent.

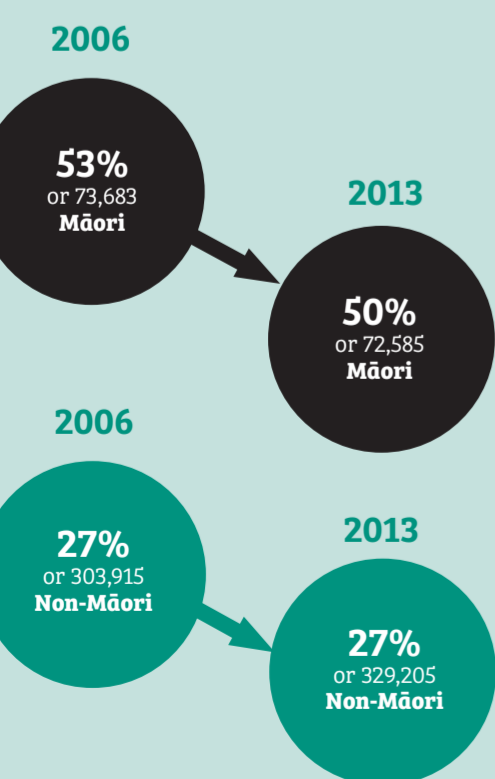
The number of Māori households needing two or more additional bedrooms remains constant.



Source: Census, Stats NZ.
Note: Based on specific criteria relevant to the number, age and sex of people per bedroom.

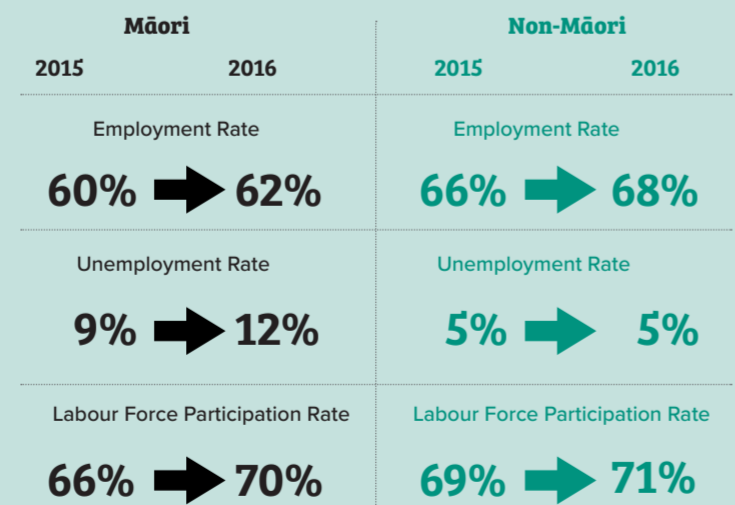
Whairawa – Whenua & Whanaketanga in Tāmaki Makaurau

Half of Māori live in highly deprived areas.



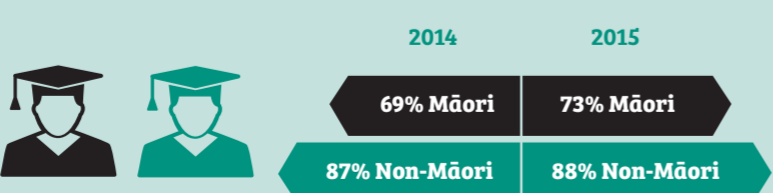
Source: Census, Stats NZ.
Note: The numbers are based on deprivation scales from 8 to 10.

Around three in five working age (15+) Māori are employed.



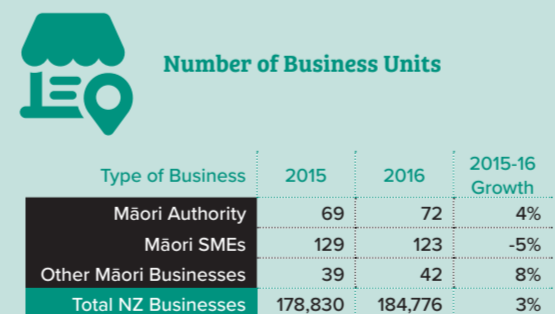
Source: Household Labour Force Survey, Stats NZ.
Note: Data as at December for each year.

Nearly three-quarters of 18-year-old Māori have a NCEA level 2 (or above) qualification.

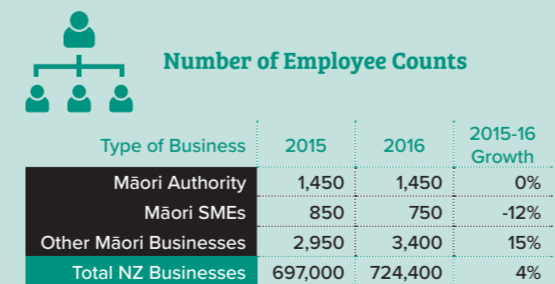


Source: Education Counts, Ministry of Education.
Note: Government's Better Public Service (BPS) target was to achieve 85% of 18-year-olds receiving NCEA Level 2 or an equivalent qualification by 30 June 2017.

More Māori authorities and other Māori business are operating in Tāmaki Makaurau, whereas Māori small and medium-sized businesses are decreasing.

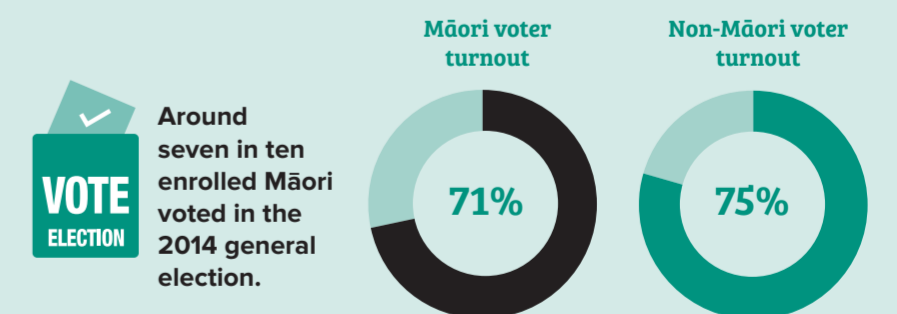


Māori businesses are employing more people.

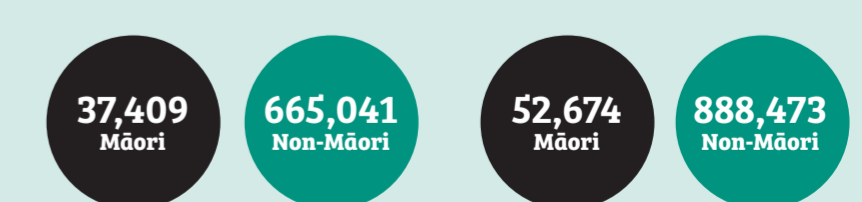


Source: New Zealand Business Demography Statistics, Stats NZ.
Notes: 1. These statistics are provisional and cover enterprises with greater than \$30,000 annual GST expenses or sales, or are GST exempt. 2. The type of Māori Business is defined in Taitauranga Umanga Māori 2016; Other Māori Businesses refer to the remainder.

Whanaungatanga – Crown-Māori Relationships in Tāmaki Makaurau



Total Number of Voters



Total Number of Voters Enrolled
Source: Electoral Commission.
Note: The numbers are calculated by Auckland electoral boundaries.