

Findings

Point in Time count, 17 September 2018

Overall numbers of people living without shelter and in temporary accommodation in the Auckland region



800 people estimated to be living without shelter based on a validation exercise¹



Based on the actual count of **336** people living without shelter

179 people living rough

157 people living in cars

335 adults

1 child



Of which, **59** met the screening criteria and gave consent to begin the survey

45 people living rough

13 people living in cars

1 person didn't confirm



A minimum of **2,874** people in temporary accommodation placements²



1027 people in MSD³ Emergency Housing Special Needs Grant funded accommodation

474 adults

553 children



1,768 people in transitional housing and other temporary settings⁴

1041
adults

746
children

60
age unknown



79 adults in mental health and addiction services⁵

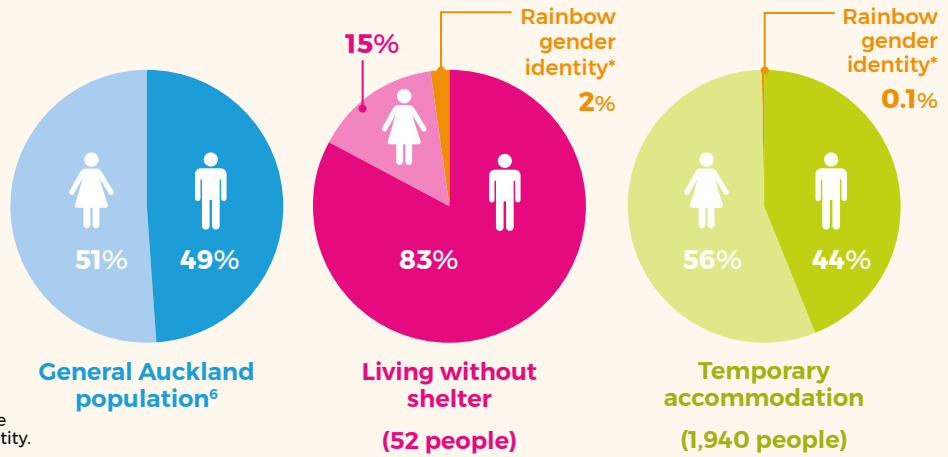
A minimum of **3,674** people living without shelter and in temporary accommodation across the Auckland region.

- 1 More information on the validation exercise is provided in the methodology section.
- 2 These 2,874 people are in 1,325 places. A placement may constitute one or more people.
- 3 Ministry of Social Development.
- 4 This includes data provided by 12 transitional and other temporary housing providers, and the Department of Corrections on their probation managed transitional housing.
- 5 This includes data from 12 mental health and addiction services from across Auckland's three district health boards. These 79 adults were homeless upon entering the service and the assumption is that they would have been homeless on night of the count.

www.aucklandhomelesscount.org.nz

Gender

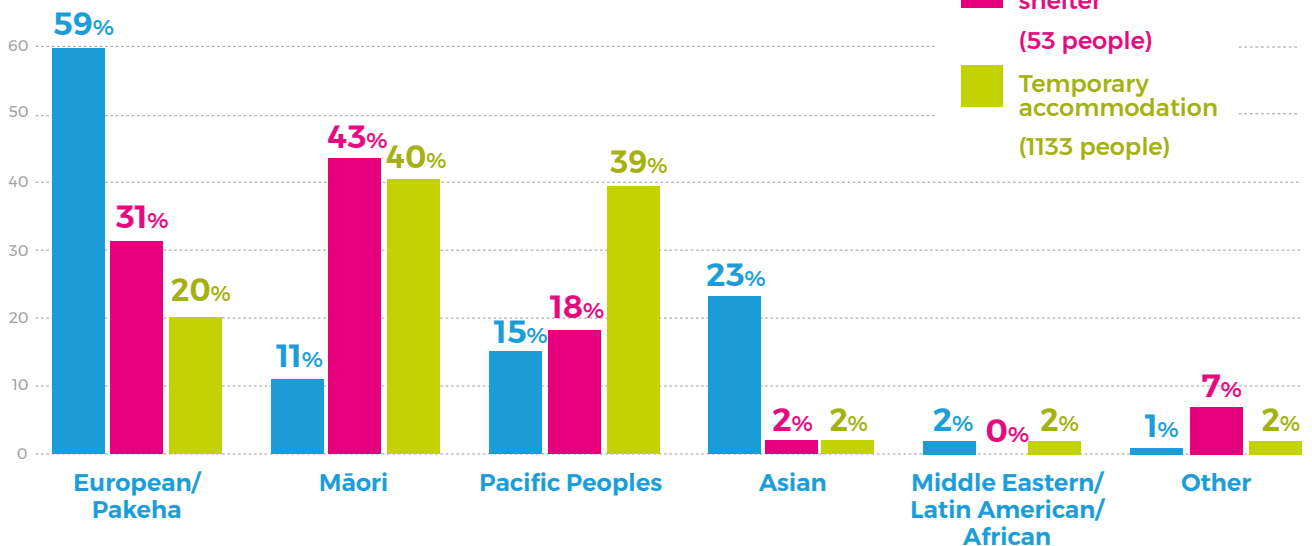
Approximately 4 in 5 people living without shelter were male. The gender of people in temporary accommodation largely reflected the general population.



* Rainbow is an inclusive term to identify people who have a diverse sex, gender identity or sexual identity.

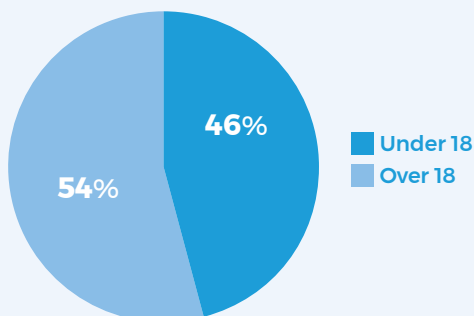
Ethnicity⁷

Māori were overrepresented among people living without shelter and in temporary accommodation. Pasifika people were overrepresented among people in temporary accommodation.



Age

Nearly half of the 2,814 people in temporary accommodation were under 18 years old.



⁶ Statistics New Zealand 2013 Census data.

⁷ Results presented are based on Statistics New Zealand's classification of ethnicity and approach to working with ethnicity data. This allows people to identify with more than one ethnic group. As a result percentages do not add up to 100%.

577 volunteers

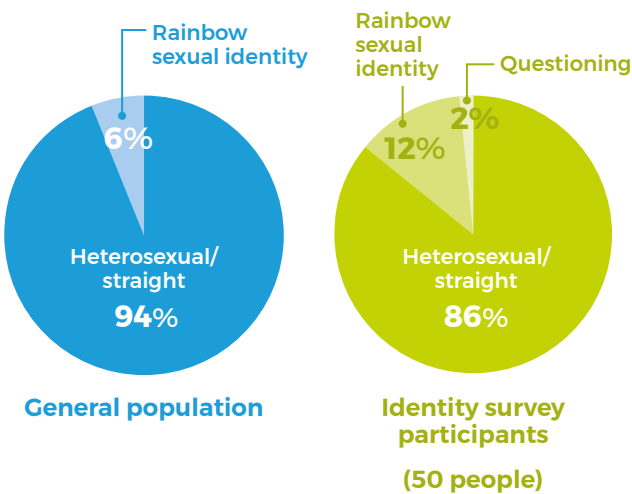
collected the living without shelter data on 17 September 2018.

Key findings

A total of **336 people** living without shelter counted through the street count. Of this, 59 people met the screening criteria and provided consent to talk about their living situation. Please note, because of the small sample size the results may not reflect the wider population of people living without shelter in Auckland.

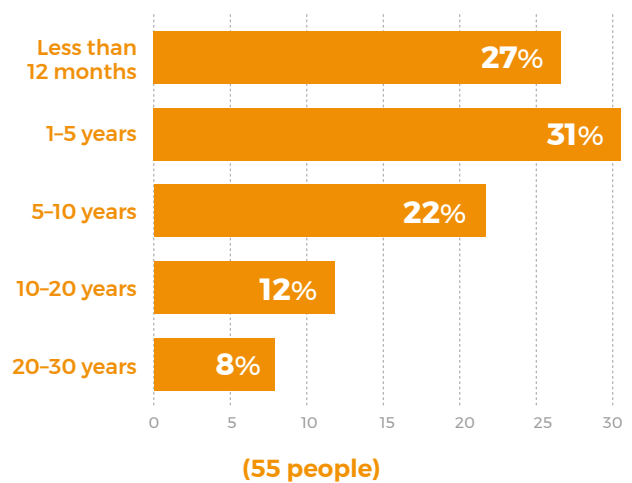
Sexual identity

People with a rainbow sexual identity were over-represented amongst those living without shelter.



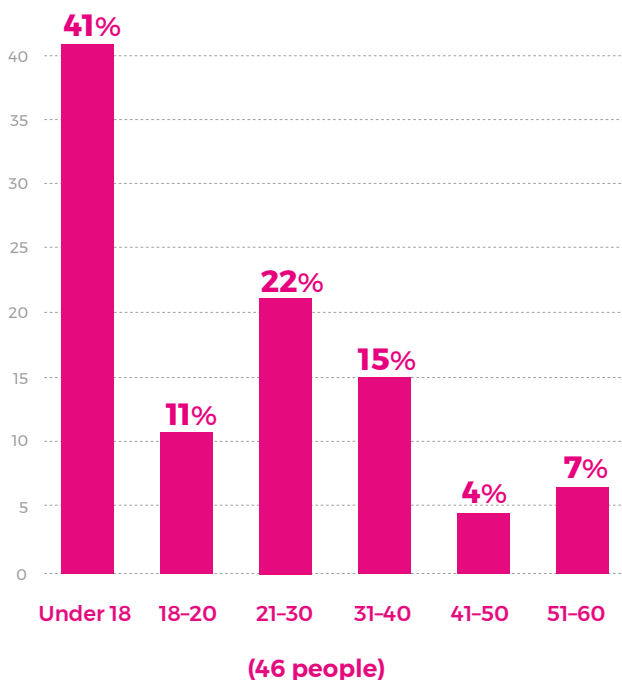
Length of time without shelter

About three-quarters of people had lived without shelter for more than 12 months over their lifetime.



Age first experienced homelessness

Just over 40% of people were under 18 years old when they first experienced unsheltered homelessness.



Experience of homelessness

Of the people surveyed living without shelter, approximately half:



considered themselves to have a disability.



had been in prison.



had spent time in foster care or a group or residential home.



had been to a hospital emergency department in the past 12 months.

Location of people living without shelter

A post-count validation exercise estimated **800** people were living without shelter across the Auckland region.

The validation exercise was based on the actual count of **336** people living without shelter. Of those 336 people, 53% were sleeping rough and 47% were sleeping in cars.

People living without shelter were most likely to be in the Waitemata and Ōtara-Papatoetoe Local Boards areas.

Local Board ⁸	Actual	% Age
A Waitemata	128	38.1%
B Ōtara-Papatoetoe	39	11.6%
C Maungakiekie-Tāmaki	18	5.3%
D Waiheke	17	5.1%
E Kaipātiki	15	4.5%
F Rodney	15	4.5%
G Māngere-Ōtāhuhu	13	3.9%
H Papakura	13	3.9%
I Upper Harbour	12	3.6%
J Whau	12	3.6%
K Albert-Eden	11	3.3%
L Hibiscus and Bays	8	2.4%
M Puketāpapa	6	1.8%
N Devonport-Takapuna	4	1.2%
O Henderson-Massey	4	1.2%
P Waitākere Ranges	3	0.9%
Q Franklin	3	0.9%
R Howick	2	0.6%
S Manurewa	2	0.6%
T Ōrākei	2	0.6%
Location unknown	9	2.7%
Total	336	100%



⁸ Great Barrier Local Board was not included in *Ira Mata, Ira Tangata*.

Find out more

To find out more about the results of *Ira Mata, Ira Tangata: Auckland's Homeless Count*, including to view the full report, go to

www.aucklandhomelesscount.org.nz/findings