

# Reflections on a revolution Auckland's population 2013-2033

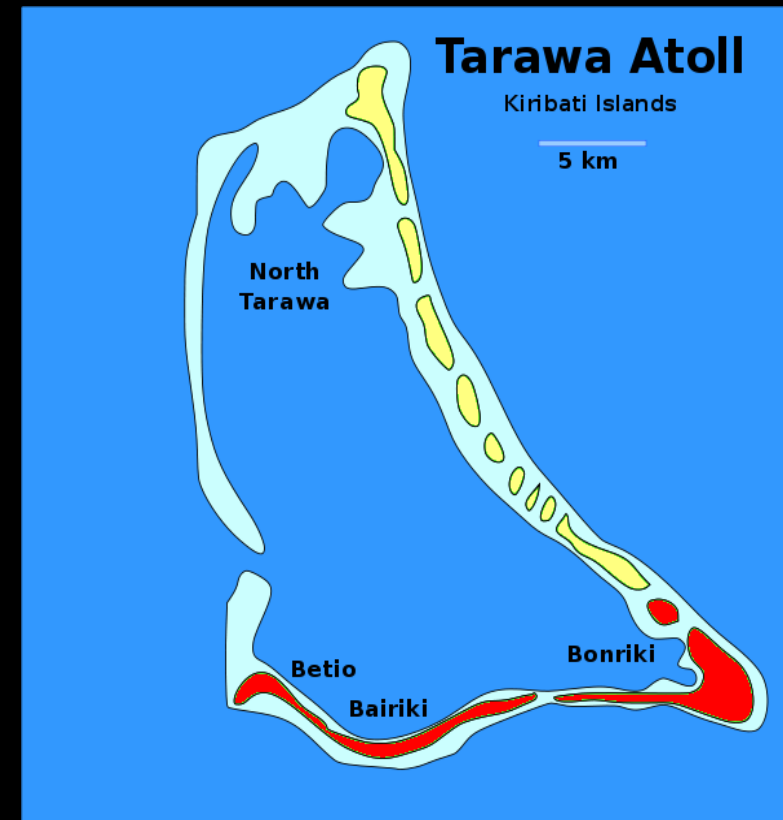
Richard Bedford  
AUT and University of Waikato

# Two constrained cities

## Singapore



## South Tarawa



# Two crowded cities

Singapore

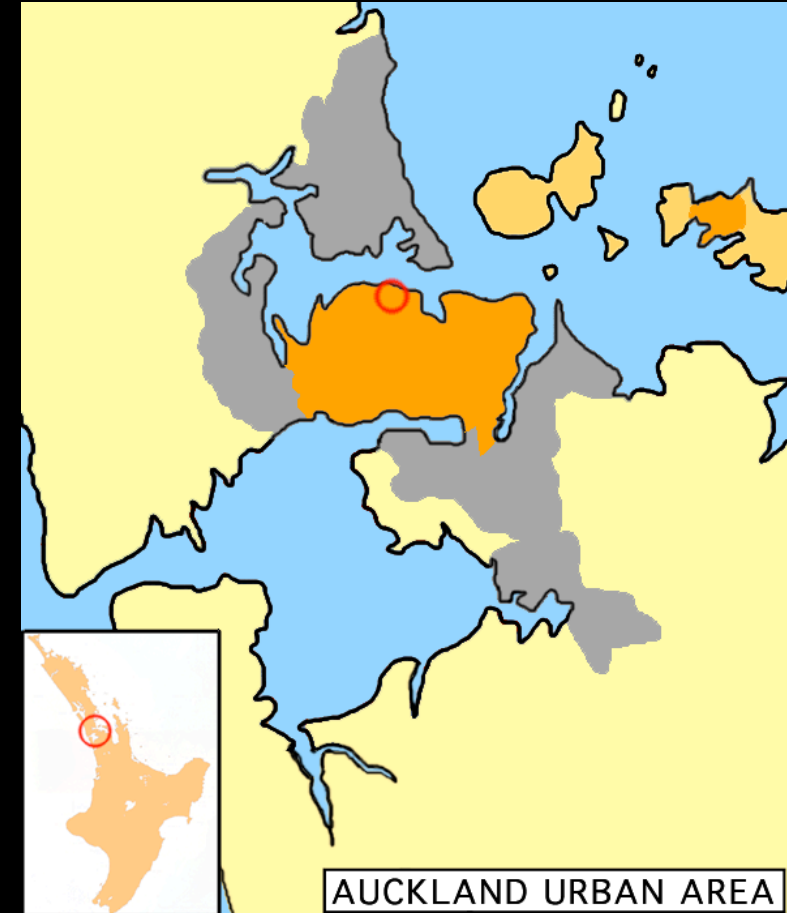
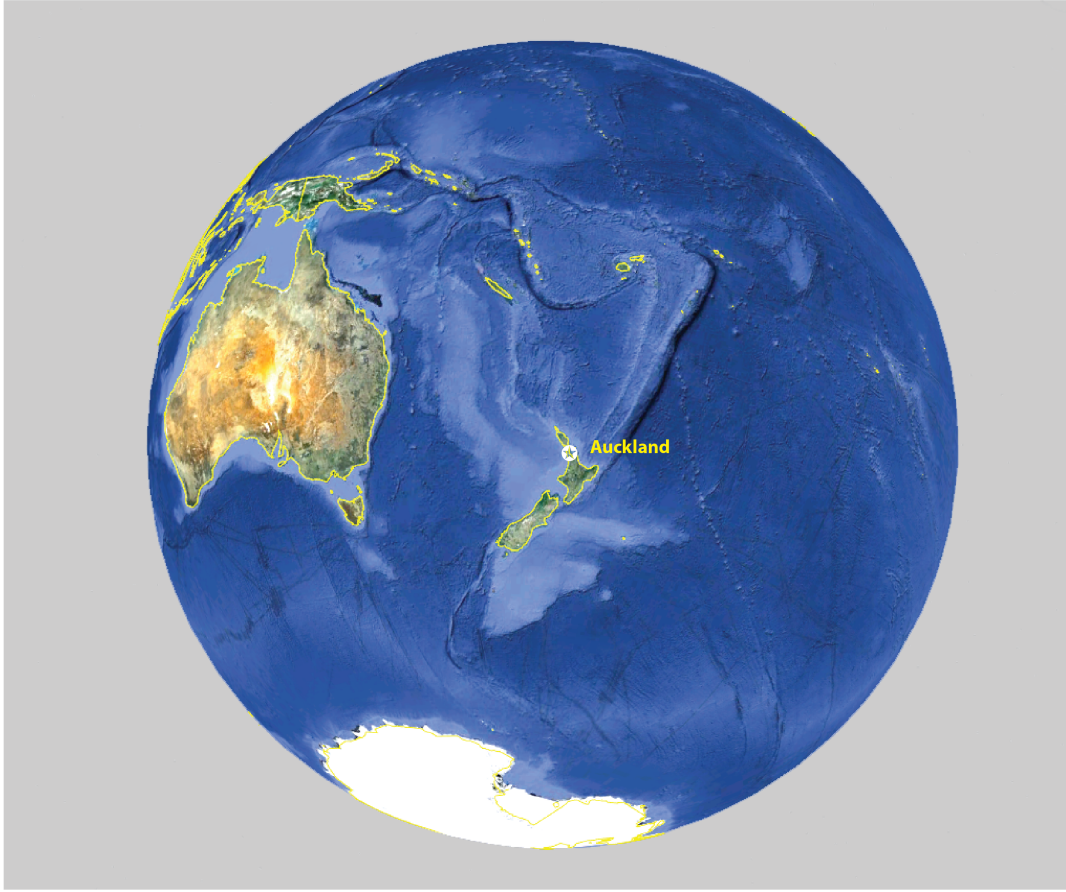


South Tarawa





# What about Auckland?





# Two “slippery” concepts

## Population

- ❖ Who is counted in a place’s population when planning services, facilities, accommodation etc?
- ❖ Who is counted in population projections?

## Migration

- ❖ Who is counted when we refer to “migrants”?
- ❖ Who is included in New Zealand’s current “permanent and long-term net migration gain”?
- ❖ Who is counted as “migrants” in population projections?

# Permanent and long-term (PLT) migration

PLT migration includes arrivals and departures who plan to have stays of 12 months or more or be away for 12 months or more

Most of the PLT arrivals are on temporary visas

The May 2017 PLT arrivals are shown by visa category in the table.

| Visa type | Number  | Percent |
|-----------|---------|---------|
| Residence | 16,738  | 12.8    |
| Student   | 23,740  | 18.2    |
| Work      | 44,459  | 34.1    |
| Visitor   | 6,446   | 4.9     |
| NZ/Aust   | 38,326  | 29.4    |
| Other     | 696     | 0.5     |
| Total     | 130,403 | 100.0   |

# Components of population growth

- ❖ **Natural increase**: the balance of births over deaths. In the year ended 31 December 2016 there were 59,430 births and 31,179 deaths. Natural increase (B-D) was 28,251.
- ❖ **Net migration**: the balance of arrivals for 12 months or more over departures for 12 months or more. In the year ended 31 December 2016 there were 127,305 PLT arrivals and 56,717 PLT departures. Net migration (A-D) was 70,588.

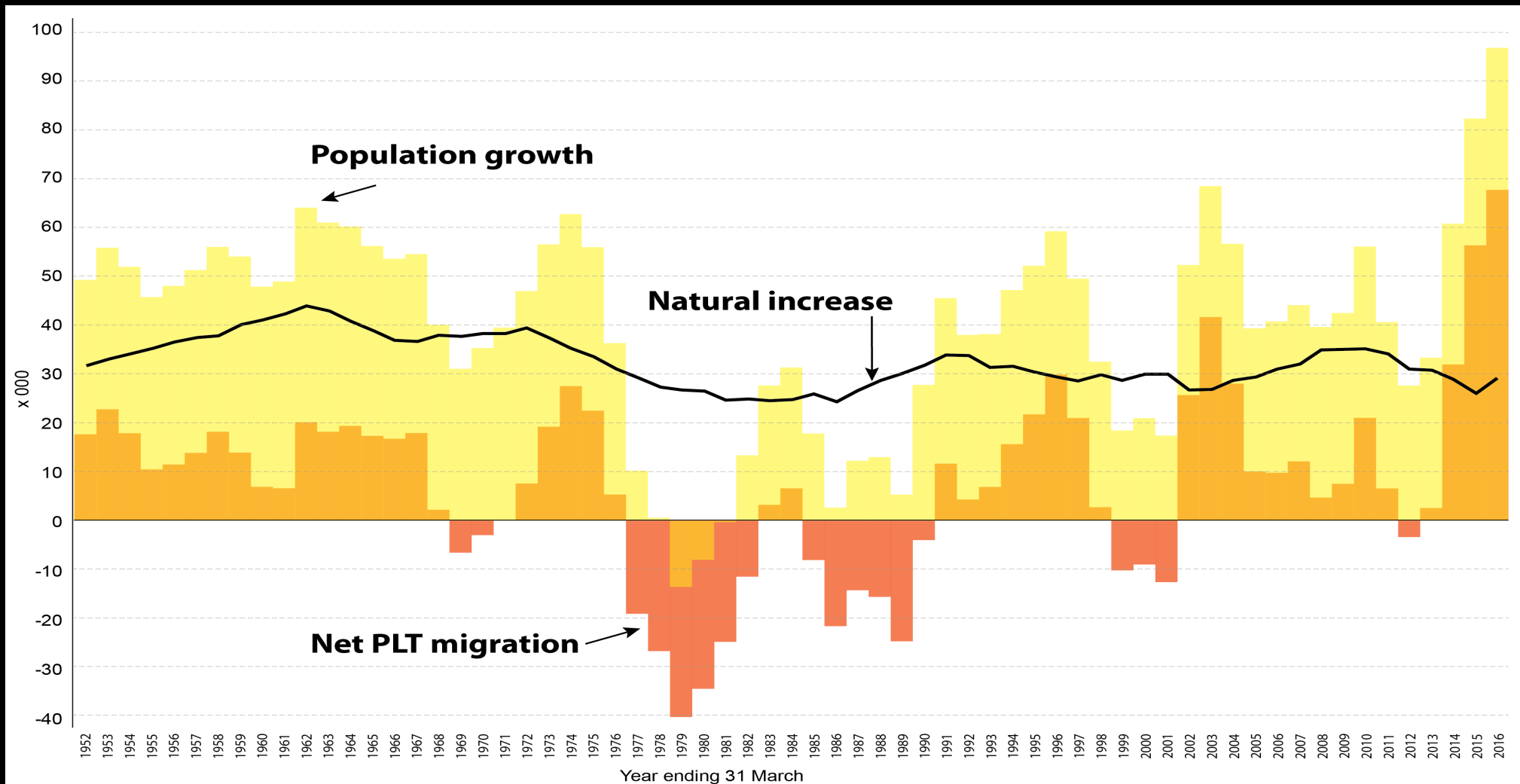


# Population growth – New Zealand

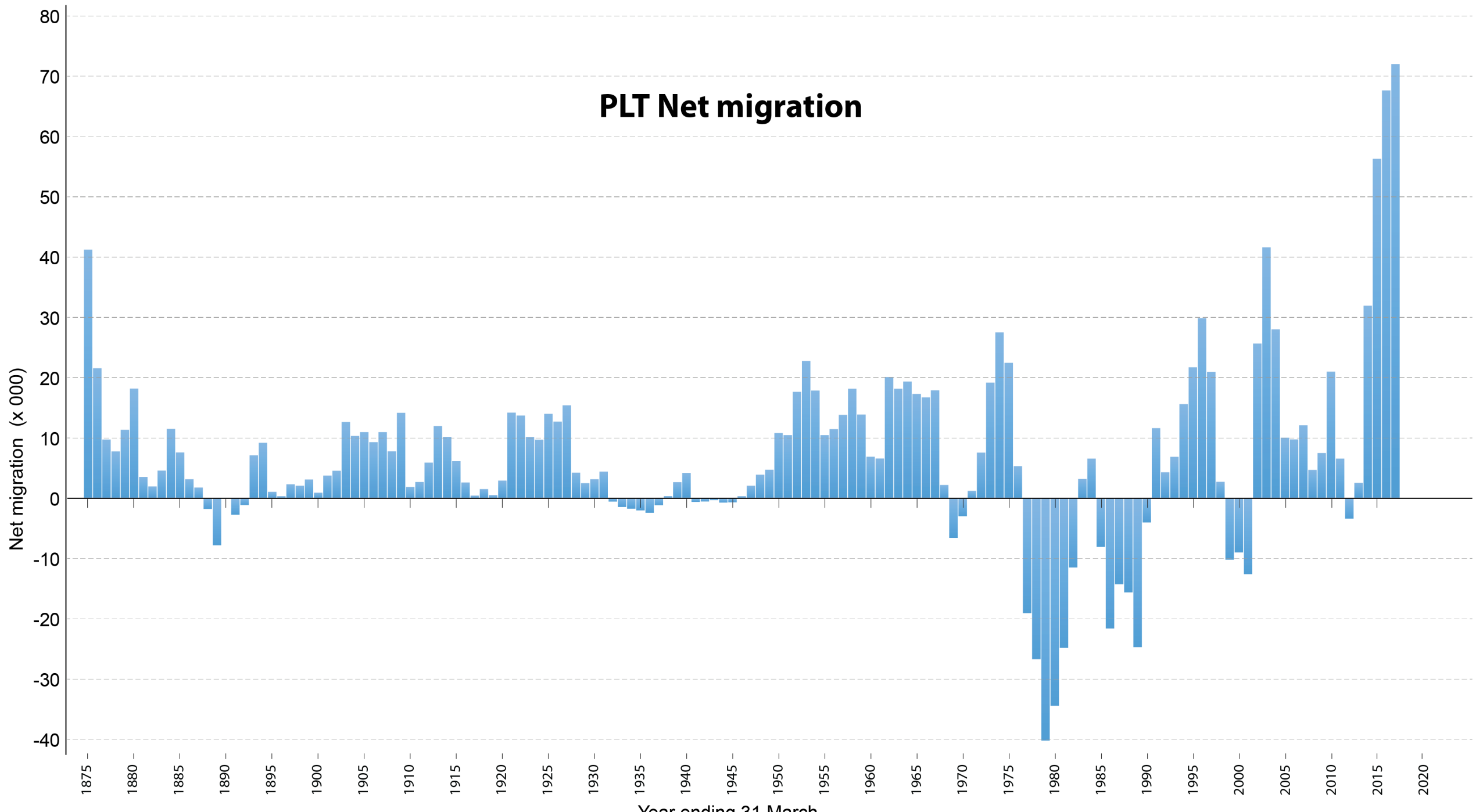
| YE 30 June | Population | Pop. change | % change | Nat. increase | Net migration |
|------------|------------|-------------|----------|---------------|---------------|
| 2012       | 4,408,100  | 24,100      | 0.55     | 31,900        | -3,200        |
| 2013       | 4,442,100  | 34,000      | 0.77     | 30,800        | 7,900         |
| 2014       | 4,509,700  | 67,600      | 1.52     | 29,300        | 38,300        |
| 2015       | 4,595,700  | 86,000      | 1.91     | 27,700        | 58,300        |
| 2016       | 4,693,000  | 97,300      | 2.12     | 28,200        | 69,100        |

# Components of population growth, NZ

## Years ending 31 March, 1952-2016



## PLT Net migration





# Components of population growth: Auckland, 2013-2033 (medium projection)

| Period     | Births  | Deaths | Nat increase | Net migration | Pop. growth |
|------------|---------|--------|--------------|---------------|-------------|
| 2008-13    | 113,700 | 37,500 | 76,200       | 11,500        | 87,700      |
| % total NZ | 36.6    | 25.5   | 46.6         | 61.5          | 48.1        |
| 2013-18    | 112,000 | 40,300 | 71,800       | 135,000       | 206,800     |
| 2018-23    | 130,400 | 43,500 | 86,900       | 72,500        | 159,400     |
| 2028-33    | 133,100 | 53,700 | 79,400       | 42,500        | 121,900     |
| % total NZ | 41.1    | 27.7   | 61.0         | 56.7          | 59.4        |

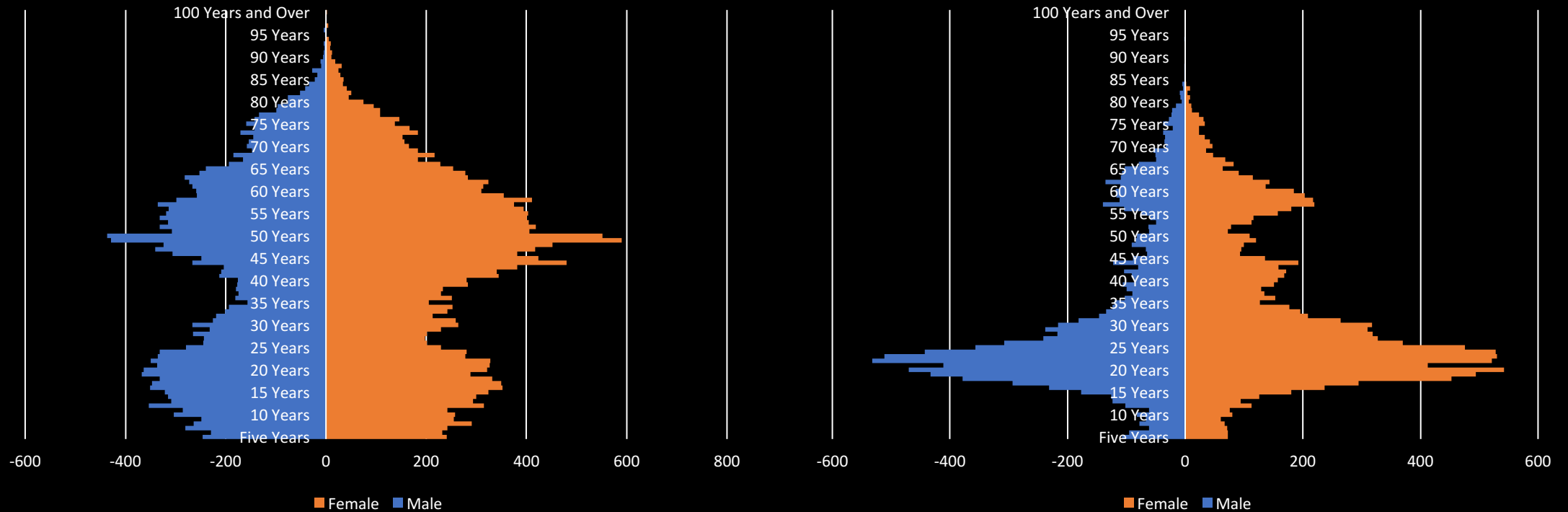
# What drives natural increase and net migration?

- ❖ **Natural increase** is driven by the structure of the population – the numbers of people, by sex, at different age groups. Auckland's diverse populations have many different structures.
- ❖ **Net migration** is driven by the movement of New Zealanders in and out of the country and the way immigration policy regulates the entry of people who are not New Zealand residents. Auckland is the main destination for the latter but not the New Zealanders coming home.

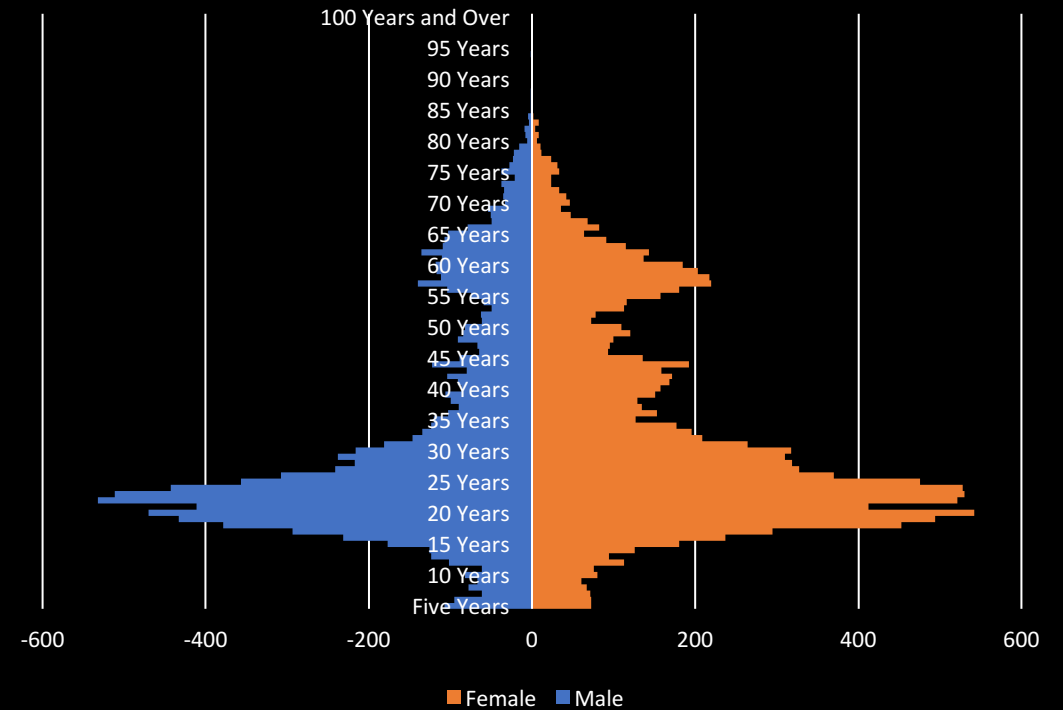
# Variable population structures

## 2013 census

### Chinese non-movers



### Chinese immigrants





# Ethnic populations 2013 and 2033

In 2013 Auckland had 27% of New Zealand's European/other population, 25% of the Maori, 66 % of the Pacific and 65% of the Asian populations.

The projected sizes and shares of these populations in 2033 are shown in the table.

| Ethnic grp | Population | % Auck pop | % NZ tot |
|------------|------------|------------|----------|
| Maori      | 247,700    | 11.7       | 25.1     |
| Pacific    | 340,800    | 16.1       | 63.0     |
| Asian      | 659,900    | 31.2       | 63.6     |
| Euro/other | 972,100    | 46.0       | 27.6     |
| Total      | 2,112,000  | 105.0      | 37.7     |

# Population growth Auckland, 2033

Statistics New Zealand has just produced some alternative projections for Auckland's population. They have added two further "high" migration variants.

The estimates for 2033 are summarised in the table.

| Projection  | Pop Auckland | Net mig (5 yr) |
|-------------|--------------|----------------|
| 2013 census | 1,493,200    | 11,500         |
| 2033        |              |                |
| "low"       | 1,938,800    | 12,500         |
| "medium"    | 2,112,000    | 42,500         |
| "high"      | 2,284,400    | 72,500         |
| "higher"    | 2,400,000    | 125,000        |
| "very high" | 2,600,000    | 175,000        |