



Auckland Regional Household Labour Force Survey: Quarterly overview – December 2016

This report

This report is prepared by the Research and Evaluation unit (RIMU) of Auckland Council. It provides an overview of aspects of labour force participation in Auckland, as indicated by results of the quarterly Household Labour Force Survey (HLFS) (administered by Statistics New Zealand). Particular focus is provided on trends across age and ethnic groups in the region, and the NEET rate.

Note: In order to ensure information is seasonally aligned, rolling annual averages are used throughout this report for reporting across time.

Definitions: A list of definitions is included at the back of this report.

Re-base: The survey and all back-data was re-based in March 2015 to match the 2013 census and incorporate regional population benchmarks. This overview uses the re-based data.

Revision: The survey and all back-data since 2009 was revised in June 2016 when “searching online ads only” was redefined from “official unemployed” to “looking at job ads only” (ie not actively seeking employment).

The Household Labour Force Survey (HLFS)

The HLFS is a national sample survey undertaken by Statistics New Zealand. It is primarily designed for national estimates. The national sample contains about 16,000 private households and about 30,000 individuals each quarter.

Households are sampled on a statistically representative basis from rural and urban areas throughout New Zealand, and information is obtained for each member of the household aged 15 or older. Each quarter, one-eighth of the households in the sample are rotated out and replaced by a new set of households.

Important note about the HLFS:

As the HLFS is a sample survey, all statistics are subject to sampling error.

Statistics presented here at the sub-sample (e.g. local board) and sub-variable (e.g. NEET) levels are also subject to additional sampling errors and should be treated as indicative only.

The information provided in this report supplements other freely available HLFS reporting:

National data released on Statistics NZ website: www.stats.govt.nz

Technical notes on the HLFS on Statistics NZ website:
<http://www.stats.govt.nz/survey-participants/a-z-of-our-surveys/household-labour-force-survey.aspx>

Further information on the HLFS and labour market data on Statistics NZ website:
http://www.stats.govt.nz/browse_for_stats/income-and-work/employment_and_unemployment.aspx

Further labour market analysis is available from MBIE:
<http://www.dol.govt.nz/publications/lmr/labour-market-analysis.asp>

Auckland Economic Quarterly provides an overview of key economic trends in Auckland:
<http://www.aucklandcouncil.govt.nz/EN/AboutCouncil/businessandconomy/Pages/home.aspx>

Additional Auckland HLFS data is available on request from Auckland Council's RIMU unit:
Contact: Ross Wilson – Analyst ✉ Ross.Wilson@aucklandcouncil.govt.nz ☎ 09 486 8561

Disclaimer - The information in this document is given in good faith and has been obtained from sources believed to be reliable and accurate at the date of preparation, but its accuracy, correctness and completeness cannot be guaranteed.

Highlights this quarter

[NOTE: The survey and all back-data were fully revised¹ in March 2015, and partially revised from March 2009 onwards in June 2016. This overview uses the revised data]

For the quarter ending December 2016:

- The overall unemployment rate was 5.1%.
- The NEET (not in employment, education or training) rate for youth aged 15-24 was 11.5%.

Over the year ending December 2016.

- The unemployment rate overall averaged 5.3 % in the year ending December 2016, a small but significant decrease* from 5.8% in the year ending December 2015.
- The unemployment rate among those aged 15 to 19 averaged 21.1%, similar* to 23.2% a year prior.
- The unemployment rate for females of all ages averaged 5.6%, a fall* from 6.5% a year prior, while the unemployment rate for males averaged 5.0%, similar to 5.2% a year prior. The gap between males and females has largely closed, and might no longer be significant*.
- Unemployment rates among Maori (11.0%) and Pacific people (9.4%) were respectively similar to and lower* than a year prior (10.1% and 11.2% respectively), and remained higher* than other ethnic groups.

Snapshot: Labour force status, comparison to preceding quarter and year

	Quarter end Sept. 2016 (snapshot)	Quarter end Dec. 2016 (snapshot)	Year end Dec. 2015 (annual average)	Year end Dec. 2016 (annual average)
Number employed	851.9	880.6	797.6	848.9
Number unemployed	47.4	47	48.9	47.3
Number not in the labour force	390.9	374	390.7	388.6
Number in the working age population	1290.3	1301.7	1237.2	1284.9
Labour force participation rate (%)	69.7	71.3	68.4	69.8
Unemployment rate (%)	5.3	5.1	5.8	5.3

Note: Numbers are '000s of people

*Definition of significant change is based on statistical sampling errors produced by Statistics NZ.

¹ See “Re-base” and “Revision” explanations on preceding page

Quick overview of unemployment rates among age, ethnicity and gender groups (%) (annual averages)

	Year end Dec. 2015	Year end Dec. 2016
Total	5.8	5.3
15-19 years	23.2	21.1
20-24 years	9.7	9.6
25-39 years	4.8	4.9
40-54 years	4.2	2.9
55 years +	3.4	3.2
Female	6.5	5.6
Male	5.2	5.0
European	4.1	3.8
Maori	10.1	11.0
Pacific	11.2	9.4
Asian	6.9	6.1
MELAA/Other	8.8	9.3

..S = data suppressed due to base numbers being too small or confidentialised.

Quick overview of labour force participation rates among age, ethnicity and gender groups (%) (annual averages)

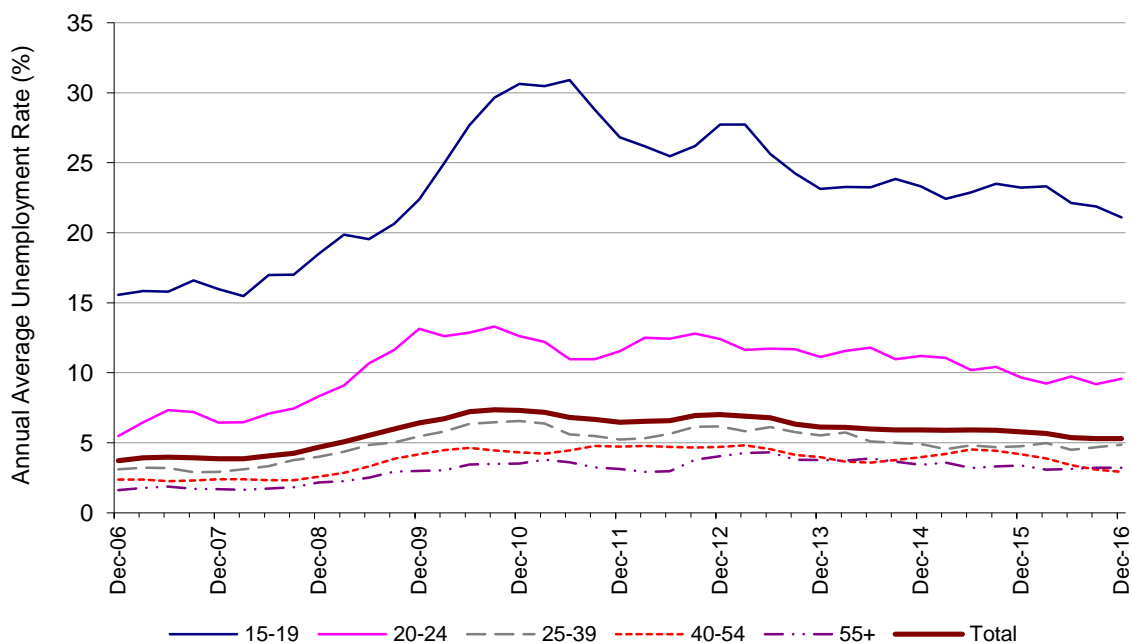
	Year end Dec. 2015	Year end Dec. 2016
Total	68.4	69.8
15-19 years	39.3	39.2
20-24 years	72.4	76.8
25-39 years	83.5	84.0
40-54 years	84.8	86.5
55 years +	47.8	48.9
Female	63.0	64.1
Male	74.3	75.8
European	71.2	71.7
Maori	64.0	66.2
Pacific	60.4	64.5
Asian	68.5	69.5
MELAA/Other	59.7	65.5

Labour force status by age, year ended December 2016 (annual averages)

	Total	15 to 19 years	20 to 24 years	25 to 39 years	40 to 54 years	55 years and over
Number employed	848.9	35.4	92.8	270.4	274.8	175.7
Number unemployed	47.3	9.5	9.8	13.8	8.3	5.9
Number not in the labour force	388.6	69.8	30.8	54.0	44.1	190.0
Number in the working age popn	1284.9	114.6	133.4	338.2	327.2	371.5
Labour force participation rate (%)	69.8	39.2	76.8	84.0	86.5	48.9
Unemployment rate (%)	5.3	21.1	9.6	4.9	2.9	3.2

Note: Numbers are '000s; totals may incorporate minor sampling discrepancies.

Unemployment rate by age group (rolling annual average) to year end December 2016

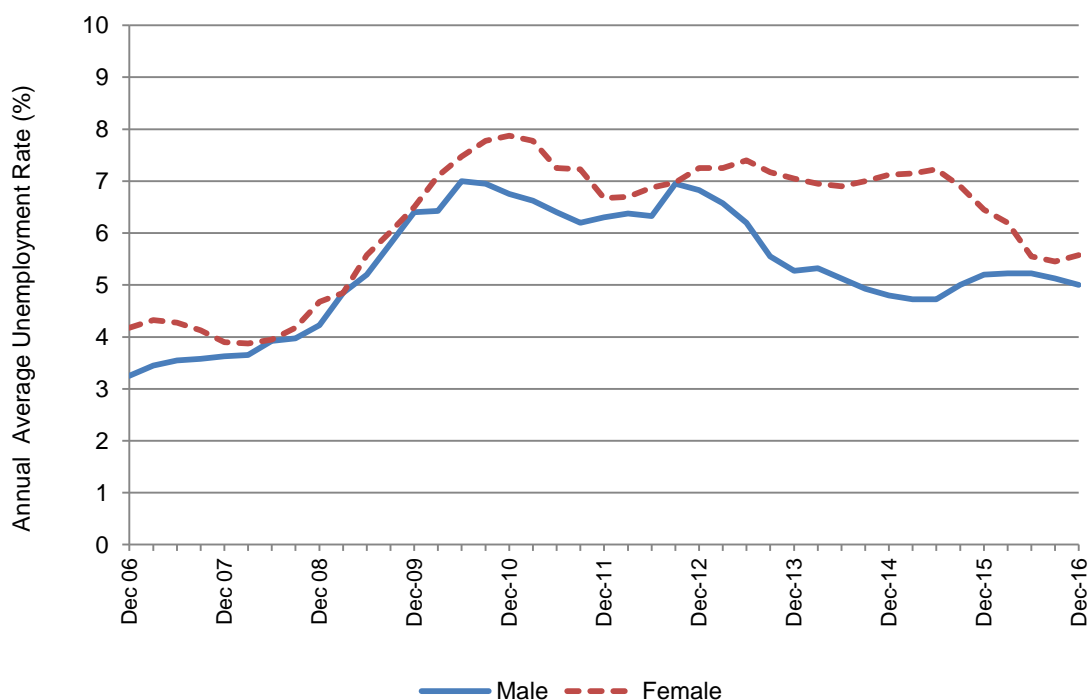


Labour force status by gender, year ended December 2016 (annual averages)

	Total	Male	Female
Number employed	848.9	448.3	400.7
Number unemployed	47.3	23.7	23.6
Number not in the labour force	388.6	150.9	237.8
Number in the working age popn	1284.9	622.8	662.0
Labour force participation rate (%)	69.8	75.8	64.1
Unemployment rate (%)	5.3	5.0	5.6

Note: Numbers are '000s

Unemployment rate by gender (rolling annual average) to year end December 2016

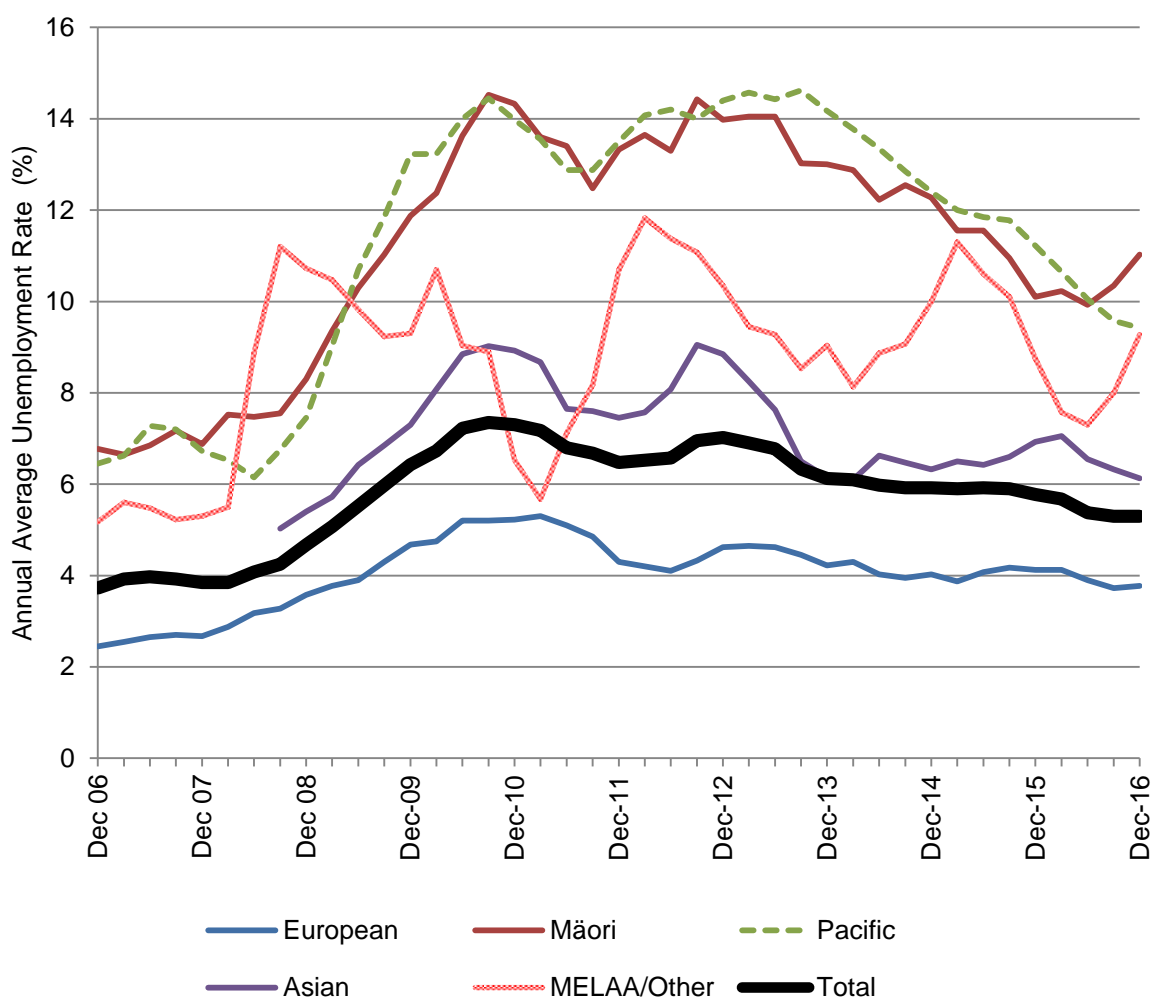


Labour force status by ethnic group, year ended December 2016 (annual averages)

	Total	European	Maori	Pacific	Asian	MELAA/Other
Number employed	848.9	535.8	66.4	91.1	198.5	17.0
Number unemployed	47.3	21.0	8.2	9.5	12.9	1.8
Number not in the labour force	388.6	219.4	38.3	55.4	92.9	9.9
Number in the working age popn	1,284.9	776.2	112.9	156.0	304.3	28.5
Labour force participation rate (%)	69.8	71.7	66.2	64.5	69.5	65.5
Unemployment rate (%)	5.3	3.8	11.0	9.4	6.1	9.3

Notes: Numbers are '000s; sums may exceed totals due to respondents selecting multiple ethnic groups
 MELAA = Middle Eastern/ Latin American/ African.
 These numbers are indicative only as sub-sample sizes are small.

Unemployment by ethnic group (rolling annual average) to year end December 2016



Note: Asian Ethnic Group was included in MELAA/Other until December Quarter 2007

Employment by occupation

In the December 2016 quarter, Auckland's largest occupational category was Professionals (26.1% of Auckland's total employment), followed by Managers (19.3%), Clerical and Administrative workers (12.5%) and Technicians and Trades workers (11.3%).

Between the September 2016 and December 2016 quarters, there were significant* increases in the number of people employed as:

- Managers
- Sales Workers
- Community and Personal Service Workers (reversing a similar decrease the previous quarter)

(Note however that occupational coding was improved from June 2016 onwards, which had the effect between March 2016 and June 2016 of shifting employees into Managers from other categories.)

In contrast, between the September 2016 and December 2016 quarters, there were significant* decreases in the number of people employed as:

- (no significant decreases)

Employment by occupation – comparison to preceding quarter

Occupation (ANZSCO 1-digit)	Sept 2016 quarter	Dec 2016 quarter	Sept 2016 quarter	Dec 2016 quarter
	Number		Share (%)	
Managers	162.3	170.2	19.1	19.3
Professionals	227.0	229.8	26.6	26.1
Technicians and Trades Workers	96.5	99.8	11.3	11.3
Community and Personal Service Workers	62.9	67.6	7.4	7.7
Clerical and Administrative Workers	113.5	110.4	13.3	12.5
Sales Workers	80.7	88.3	9.5	10.0
Machinery Operators and Drivers	43.2	46.0	5.1	5.2
Labourers	46.3	47.5	5.4	5.4
Total	851.9	880.6	100.0	100.0

Notes: Numbers are '000s. Total includes not elsewhere included.

*Significance is based on statistical sampling errors produced by Statistics NZ.

Employment by industry

In the December 2016 quarter, the largest sectors in terms of employment were Other Business Services (151,200 people; 17.2% of total employment) and Wholesale and Retail (135,000 people; 15.3% of total employment).

Between the September 2016 and December 2016 quarters, there were significant* increases in the number of people employed in the following sectors:

- Agriculture and Mining
- Utilities and Construction
- Wholesale and Retail
- Transport, Postal and Warehousing
- Health Care and Social Assistance

In contrast, between the September 2016 and December 2016 quarters there were significant* decreases in the number of people employed in the following sectors:

- Manufacturing (reversing a similar increase the previous quarter)

Employment by industry – comparison to preceding quarter

Industry (ANZSIC06)	Sept 2016 quarter	Dec 2016 quarter	Sept 2016 quarter	Dec 2016 quarter
	Number		Share (%)	
Agriculture and Mining	8.7	11.0	1.0	1.2
Manufacturing	88.6	82.5	10.4	9.4
Utilities and Construction	85.7	91.9	10.1	10.4
Wholesale and Retail	126.5	135.0	14.8	15.3
Accommodation and Food Services	43.6	46.8	5.1	5.3
Transport, Postal and Warehousing	39.4	45.1	4.6	5.1
Information Media and Telecommunications	20.9	23.2	2.5	2.6
Financial and Insurance Services	32.1	33.6	3.8	3.8
Other Business Services	145.4	151.2	17.1	17.2
Education and Training	78.9	81.2	9.3	9.2
Health Care and Social Assistance	76.1	81.8	8.9	9.3
Other Services	87.5	87.8	10.3	10.0
Total (including not specified)	851.9	880.6	100.0	100.0

Notes: Numbers are '000s, rounded to nearest hundred.

*Significance is based on statistical sampling errors produced by Statistics NZ.

Rates of Auckland youth not in employment, education or training (NEET)

In the December 2016 quarter, the overall percentage of young people (aged 15-24) in Auckland who were not in employment, education or training (NEET) was 11.5%; this was lower than* the New Zealand average of 13.6% over the same period.

Due to small sub-sample sizes this information is not always available for several local board areas (“..S”), and Great Barrier local board area is always excluded for the same reason. Other local board NEET levels and rates have an error margin of up to 56% (eg “10%” could actually be between 4.4% and 15.6%), so are indicative only.

NEET rates by local board area – December 2016 quarter

Local board area	15-24 Age Population (000)	NEET (000)	NEET rate (%)
Rodney	5.0	1.0	20.2
Hibiscus and Bays	14.3	..S	..S
Upper Harbour	10.9	..S	..S
Kaipatiki	19.6	2.9	14.9
Devonport-Takapuna	10.9	..S	..S
Henderson-Massey	17.9	2.2	12.1
Waitakere Ranges	7.9	1.1	14.5
Waiheke	..S	..S	..S
Waitemata	9.8	1.0	10.7
Whau	15.4	2.1	13.6
Albert-Eden	22.5	1.3	5.7
Puketapapa	9.5	1.8	18.5
Orakei	16.1	1.0	6.2
Maungakiekie-Tamaki	9.9	1.6	16.6
Howick	23.4	2.7	11.3
Mangere-Otahuhu	11.1	..S	..S
Otara-Papatoetoe	15.9	3.3	20.6
Manurewa	14.8	2.5	16.8
Papakura	5.4	1.0	19.1
Franklin	10.2	..S	..S
Auckland total	251.1	28.8	11.5
Southern Initiative	47.2	7.6	16.1
Rest of Auckland	203.9	21.3	10.4
Rest of New Zealand	417.7	61.9	14.8
Total New Zealand	668.8	90.7	13.6

..S = data suppressed due to base numbers being too small.

Any finer geography than “published Region” level (e.g. Auckland total) is below the design level of the survey. Estimates should be treated as indicative only and used with caution.

The Southern Initiative is made up of the Mangere-Otahuhu, Otara-Papatoetoe, Manurewa and Papakura Local Boards

*Significance is based on statistical sampling errors produced by Statistics NZ.

Definitions used in the HLFS

Labour force: Members of the working-age population who during their survey reference week were classified as 'employed' or 'unemployed'.

Labour force participation rate: The total labour force expressed as a percentage of the working-age population.

NEET rate: Calculated as the total number of youth (aged 15–24 years) who are not in employment, education or training (NEET), as a proportion of the total youth working-age population.

Unemployed: Unemployed persons are those in the working-age population who were without a paid job, available for work and had either actively sought work in the past four weeks ending with the reference week, or had a new job to start within the next four weeks.

Unemployment rate: The number of unemployed expressed as a percentage of the labour force.

Persons not in the labour force: Any person who is neither employed nor unemployed. This category includes, for example:

- retired persons
- persons with personal or family responsibilities such as child care, unpaid house work
- persons attending educational institutions
- persons permanently unable to work due to physical or mental handicaps
- persons who were not actively seeking work.