



Auckland Regional Household Labour Force Survey: Quarterly overview – December 2015

This report

This report is prepared by the Research and Evaluation unit (RIMU) of Auckland Council. It provides an overview of aspects of labour force participation in Auckland, as indicated by results of the quarterly Household Labour Force Survey (HLFS) (administered by Statistics New Zealand). Particular focus is provided on trends across age and ethnic groups in the region, and the NEET rate.

Note: In order to ensure information is seasonally aligned, rolling annual averages are used throughout this report for reporting across time.

Definitions: A list of definitions is included at the back of this report.

Re-base: The survey and all back-data was re-based in March 2015 to match the 2013 census and incorporate regional population benchmarks. This overview uses the re-based data.

The Household Labour Force Survey (HLFS)

The HLFS is a national sample survey undertaken by Statistics New Zealand. It is primarily designed for national estimates. The national sample contains about 16,000 private households and about 30,000 individuals each quarter.

Households are sampled on a statistically representative basis from rural and urban areas throughout New Zealand, and information is obtained for each member of the household aged 15 or older. Each quarter, one-eighth of the households in the sample are rotated out and replaced by a new set of households.

Important note about the HLFS:

As the HLFS is a sample survey, all statistics are subject to sampling error.

Statistics presented here at the sub-sample (e.g. local board) and sub-variable (e.g. NEET) levels are also subject to additional sampling errors and should be treated as indicative only.

The information provided in this report supplements other freely available HLFS reporting:

National data released on Statistics NZ website: www.stats.govt.nz

Technical notes on the HLFS on Statistics NZ website:

<http://www.stats.govt.nz/survey-participants/a-z-of-our-surveys/household-labour-force-survey.aspx>

Further information on the HLFS and labour market data on Statistics NZ website:

http://www.stats.govt.nz/browse_for_stats/income-and-work/employment_and_unemployment.aspx

National data released on Statistics NZ website: www.stats.govt.nz

Further labour market analysis is available from MBIE:

<http://www.dol.govt.nz/publications/lmr/labour-market-analysis.asp>

Auckland Economic Quarterly provides an overview of key economic trends in Auckland:

<http://www.aucklandcouncil.govt.nz/EN/AboutCouncil/businessandconomy/Pages/home.aspx>

Additional Auckland HLFS data is available on request from Auckland Council's RIMU unit:

Contact: Ross Wilson – Analyst ✉ Ross.Wilson@aucklandcouncil.govt.nz ☎ 09 486 8561

Disclaimer - The information in this document is given in good faith and has been obtained from sources believed to be reliable and accurate at the date of preparation, but its accuracy, correctness and completeness cannot be guaranteed.

Highlights this quarter

[NOTE: The survey and all back-data were revised¹ in March 2015. This overview uses the revised data]

At the end of the December 2015 quarter:

- The overall unemployment rate was 5.4%.
- The NEET (not in employment, education or training) rate for youth aged 15-24 was 9.7%.

Over the year ending December 2015:

- The unemployment rate overall averaged 6.2 % in the year ending December 2015, similar* to 6.4% in the year ending December 2014.
- The unemployment rate among those aged 15 to 19 averaged 24.5%, similar* to 25.0% a year prior.
- Unemployment rates among Maori (10.4%) and Pacific people (11.9%) were significantly* lower than a year prior (12.8% for both), but remained higher than most other ethnic groups.

Snapshot: Labour force status Auckland, comparison to preceding quarter

	Quarter end Sept. 2015 (snapshot)	Quarter end Dec. 2015 (snapshot)	Year end Sept. 2015 (annual average)	Year end Dec. 2015 (annual average)
Number employed	783.5	818.6	791.8	797.6
Number unemployed	51.6	47.0	53.3	52.8
Number not in the labour force	405.2	389.5	381.7	386.8
Number in the working age population	1240.3	1255.0	1226.8	1237.2
Labour force participation rate (%)	67.3	69.0	68.9	68.7
Unemployment rate (%)	6.2	5.4	6.3	6.2

Note: Numbers are '000s of people

*Definition of significant change is based on statistical sampling errors produced by Statistics NZ.

¹ See "Re-base" explanation on preceding page

Quick overview of unemployment rates among age, ethnicity and gender groups (%) (annual averages)

	Year end December 2014	Year end December 2015
Total	6.4	6.2
15-19 years	25.0	24.5
20-24 years	12.5	10.8
25-39 years	5.2	5.0
40-54 years	4.2	4.4
55 years +	3.7	3.8
Female	7.7	6.9
Male	5.2	5.6
European	4.3	4.4
Maori	12.8	10.4
Pacific	12.8	11.9
Asian	7.3	7.5
MELAA/Other	10.9	10.1

..S = data suppressed due to base numbers being too small or confidentialised.

Quick overview of labour force participation rates among age, ethnicity and gender groups (%) (annual averages)

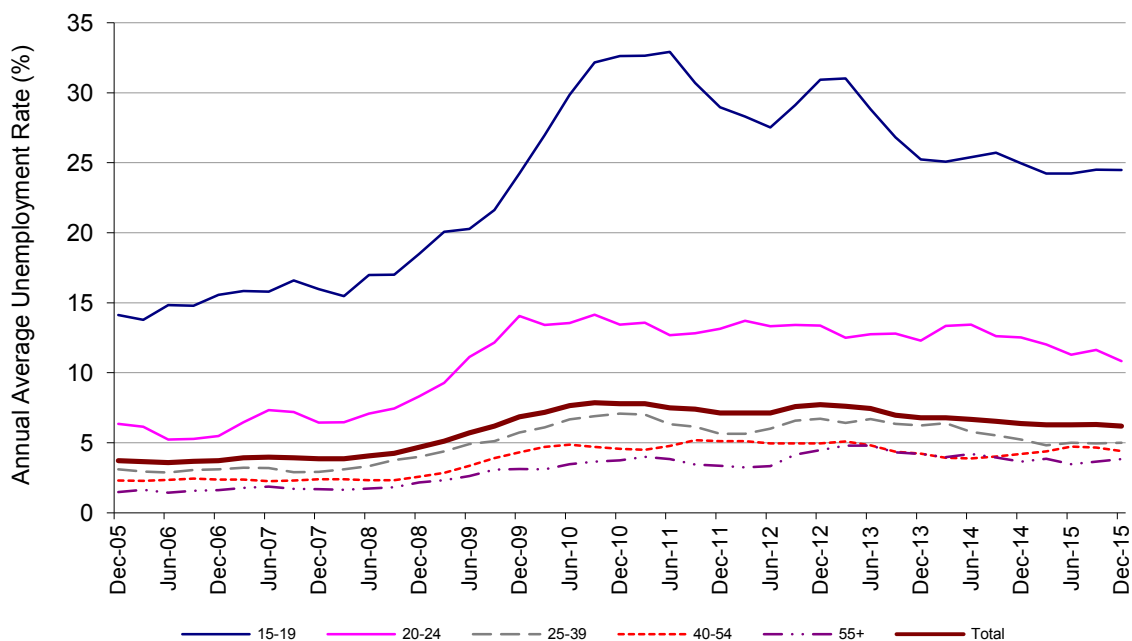
	Year end December 2014	Year end December 2015
Total	68.7	68.7
15-19 years	36.8	40.0
20-24 years	71.7	73.3
25-39 years	82.9	83.7
40-54 years	84.7	84.9
55 years +	48.3	48.0
Female	63.0	63.3
Male	75.0	74.5
European	72.2	71.4
Maori	66.2	64.1
Pacific	60.0	60.8
Asian	67.2	68.9
MELAA/Other	58.0	60.6

Labour force status by age, year ended December 2015 (annual averages)

	Total	15 to 19 years	20 to 24 years	25 to 39 years	40 to 54 years	55 years and over
Number employed	797.6	33.7	81.9	259.1	258.7	164.3
Number unemployed	52.8	10.9	10.0	13.7	11.8	6.5
Number not in the labour force	386.9	67.1	33.4	53.2	48.1	185.2
Number in the working age popn	1237.2	111.7	125.2	325.8	318.6	355.9
Labour force participation rate (%)	68.8	40.0	73.3	83.7	84.9	48.0
Unemployment rate (%)	6.2	24.5	10.8	5.0	4.4	3.8

Note: Numbers are '000s; totals may incorporate minor sampling discrepancies.

Unemployment rate by age group (rolling annual average) to year end December 2015

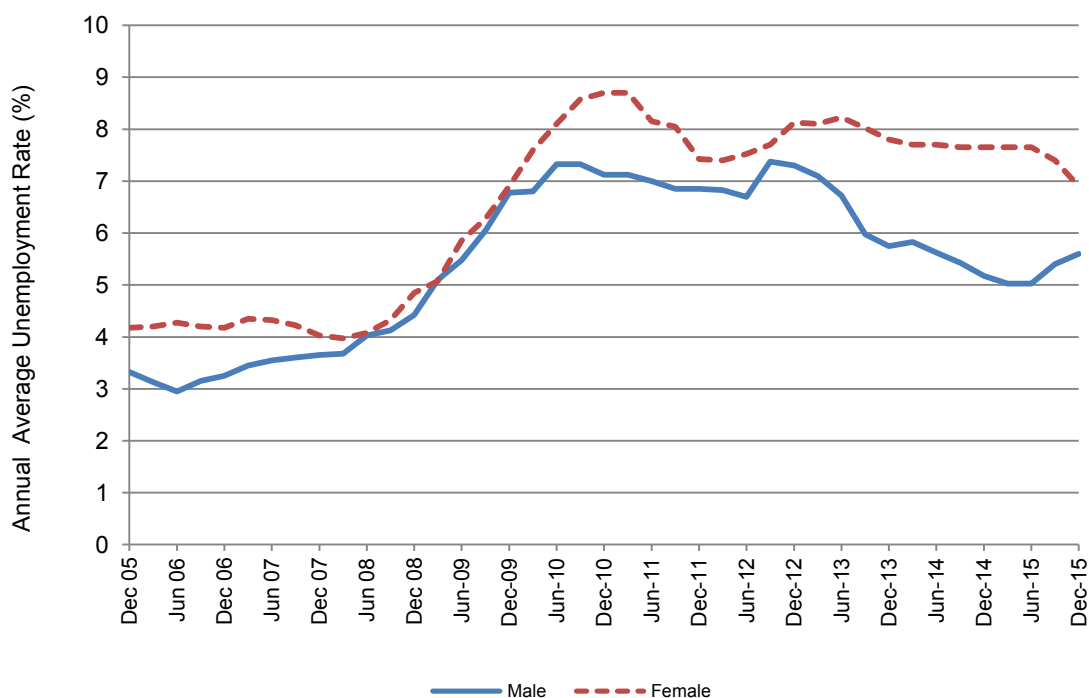


Labour force status by gender, year ended December 2015 (annual averages)

	Total	Male	Female
Number employed	797.6	423.1	374.5
Number unemployed	52.8	24.9	27.8
Number not in the labour force	386.8	153.2	233.6
Number in the working age popn	1237.2	601.3	635.9
Labour force participation rate (%)	68.7	74.5	63.3
Unemployment rate (%)	6.2	5.6	6.9

Note: Numbers are '000s

Unemployment rate by gender (rolling annual average) to year end December 2015

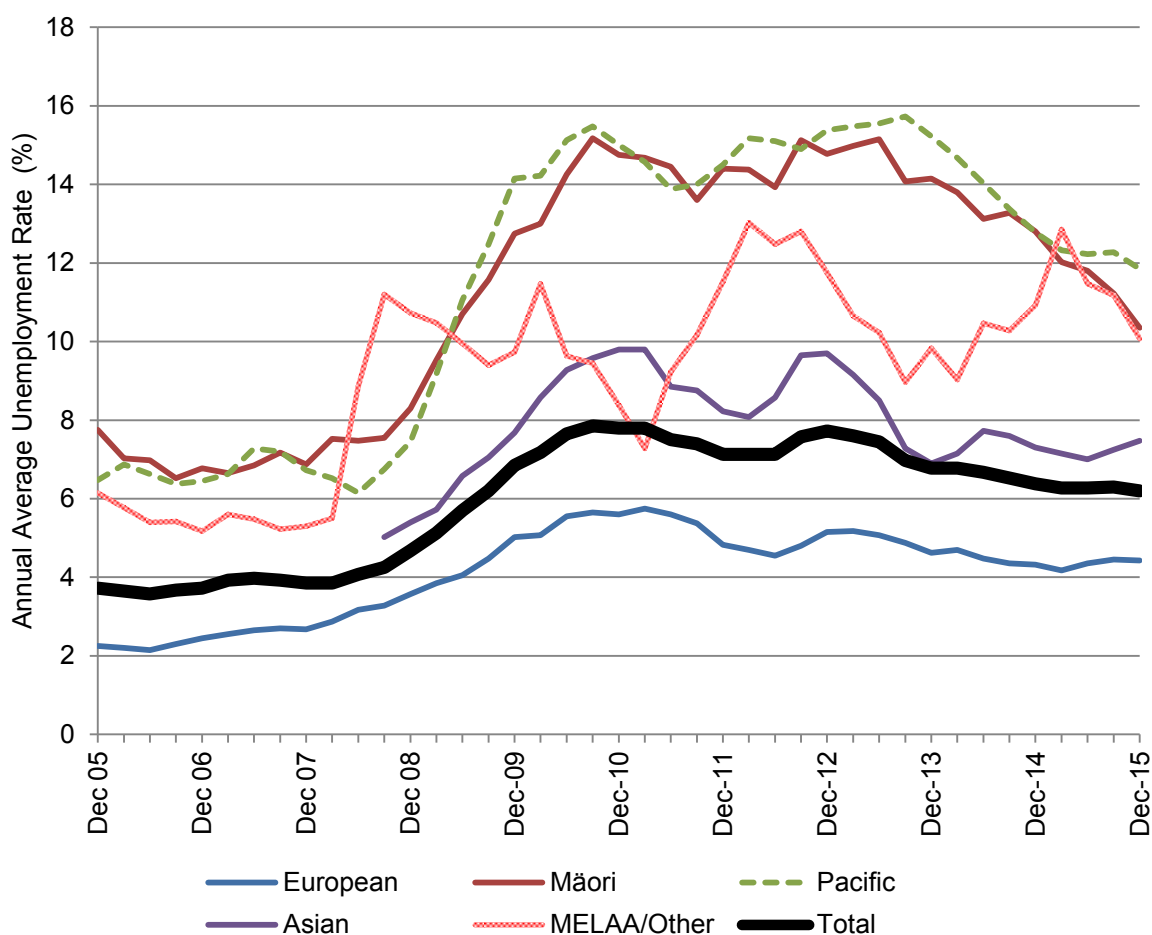


Labour force status by ethnic group, year ended December 2015 (annual averages)

	Total	European	Maori	Pacific	Asian	MELAA/ Other
Number employed	797.6	510.0	63.6	80.1	183.5	17.9
Number unemployed	52.8	23.6	7.4	10.7	14.9	2.0
Number not in the labour force	386.9	213.6	39.8	58.7	89.3	13.0
Number in the working age popn	1,237.2	747.1	110.7	149.4	287.7	32.9
Labour force participation rate (%)	68.8	71.4	64.1	60.8	68.9	60.6
Unemployment rate (%)	6.2	4.4	10.4	11.9	7.5	10.1

Notes: Numbers are '000s; sums may exceed totals due to respondents selecting multiple ethnic groups
 MELAA = Middle Eastern/ Latin American/ African.
 These numbers are indicative only as sub-sample sizes are small.

Unemployment by ethnic group (rolling annual average) to year end December 2015



Note: Asian Ethnic Group was included in MELAA/Other until December Quarter 2007

Employment by occupation

In the December 2015 quarter, Auckland's largest occupational category was Professionals (26.8% of Auckland's total employment), followed by Managers (16.3%), Clerical and Administrative workers (13.2%) and Technicians and Trades workers (12.9%).

Between the September 2015 and December 2015 quarters, there were significant* increases in the number of people employed as:

- Labourers
- Sales Workers
- Technicians and Trades Workers

In contrast, between the September 2015 and December 2015 quarters, there were significant* decreases in the number of people employed as:

- Community and Personal Service Workers

Occupation (ANZSCO 1-digit)	Sept. 2015 quarter	Dec. 2015 quarter	Sept. 2015 quarter	Dec. 2015 quarter
	Number		%	
Managers	127.3	133.5	16.2	16.3
Professionals	212.5	219.3	27.1	26.8
Technicians and Trades Workers	97.1	105.2	12.4	12.9
Community and Personal Service Workers	71.5	66.2	9.1	8.1
Clerical and Administrative Workers	103.6	108.1	13.2	13.2
Sales Workers	76.5	85.6	9.8	10.5
Machinery Operators and Drivers	40.6	39.4	5.2	4.8
Labourers	50.1	57.9	6.4	7.1
Total	783.5	818.6	100.0	100.0

Notes: Numbers are '000s. Total includes not elsewhere included.

*Significance is based on statistical sampling errors produced by Statistics NZ.

Employment by industry

In the December 2015 quarter, the largest sectors in terms of employment were other business services (131,900 people; 16.1% of total employment) and wholesale and retail (120,500 people; 14.7% of total employment). Several other sectors were close behind.

Between the September 2015 and December 2015 quarters, there were significant* increases in the number of people employed in the following sectors:

- Agriculture and Mining
- Other Business Services

In contrast, between the September 2015 and December 2015 quarters there were significant* decreases in the number of people employed in the following sectors:

- [No significant decreases]

Industry (ANZSIC06)	Sept. 2015 quarter	Dec. 2015 quarter	Sept. 2015 quarter	Dec. 2015 quarter
	Number		%	
Agriculture and Mining	6.3	8.5	0.8	1.0
Manufacturing	81.3	83.5	10.4	10.2
Utilities and Construction	81.2	85.5	10.4	10.4
Wholesale and Retail	120.0	120.5	15.3	14.7
Accommodation and Food Services	40.7	42.7	5.2	5.2
Transport, Postal and Warehousing	35.5	37.8	4.5	4.6
Information Media and Telecommunications	22.4	24.8	2.9	3.0
Financial and Insurance Services	31.2	32.6	4.0	4.0
Other Business Services	122.8	131.9	15.7	16.1
Education and Training	72.1	74.6	9.2	9.1
Health Care and Social Assistance	86.1	86.2	11.0	10.5
Other Services	79.9	83.0	10.2	10.1
Total (including not specified)	783.5	818.6	100.0	100.0

Notes: Numbers are '000s, rounded to nearest hundred.

*Significance is based on statistical sampling errors produced by Statistics NZ.

Rates of Auckland youth not in employment, education or training (NEET)

In the December 2015 quarter, the overall percentage of young people (aged 15-24) in Auckland who were not in employment, education or training (NEET) was 9.7%; this was significantly* lower than the New Zealand average of 10.9% over the same period.

Due to small sub-sample sizes this information is not available for several local board areas (“..S”)

NEET rates by local board area	15-24 Age Population (000)	NEET (000)	NEET rate (%)
Rodney	3.1	..S	..S
Hibiscus and Bays	18.5	1.1	6.0
Upper Harbour	11.3	..S	..S
Kaipatiki	11.6	..S	..S
Devonport-Takapuna	9.0	..S	..S
Henderson-Massey	16.6	1.7	10.3
Waitakere Ranges	13.1	..S	..S
Waiheke			
Waitemata	10.1	..S	..S
Whau	12.4	1.7	14.0
Albert-Eden	22.9	1.2	5.4
Puketapapa	12.4	1.6	13.2
Orakei	13.0	..S	..S
Maungakiekie-Tamaki	11.5	1.7	14.5
Howick	17.3	1.9	11.0
Mangere-Otahuhu	11.1	2.7	24.0
Otara-Papatoetoe	10.8	1.5	13.8
Manurewa	16.8	1.7	10.3
Papakura	7.7	1.5	19.1
Franklin	9.3	..S	..S
Auckland total	239.2	23.2	9.7
Southern Initiative	46.5	7.4	15.8
Rest of Auckland	192.7	15.9	8.2
Rest of New Zealand	416.8	48.1	11.5
Total New Zealand	656.0	71.4	10.9

..S = data suppressed due to base numbers being too small.

Any finer geography than "published Region" level (e.g. Auckland total) is below the design level of the survey. Estimates should be treated as indicative only and used with caution.

The Southern Initiative is made up of the Mangere-Otahuhu, Otara-Papatoetoe, Manurewa and Papakura Local Boards

*Significance is based on statistical sampling errors produced by Statistics NZ.

Definitions used in the HLFS

Labour force: Members of the working-age population who during their survey reference week were classified as 'employed' or 'unemployed'.

Labour force participation rate: The total labour force expressed as a percentage of the working-age population.

NEET rate: Calculated as the total number of youth (aged 15–24 years) who are not in employment, education or training (NEET), as a proportion of the total youth working-age population.

Unemployed: Unemployed persons are those in the working-age population who were without a paid job, available for work and had either actively sought work in the past four weeks ending with the reference week, or had a new job to start within the next four weeks.

Unemployment rate: The number of unemployed expressed as a percentage of the labour force.

Persons not in the labour force: Any person who is neither employed nor unemployed. This category includes, for example:

- retired persons
- persons with personal or family responsibilities such as child care, unpaid house work
- persons attending educational institutions
- persons permanently unable to work due to physical or mental handicaps
- persons who were not actively seeking work.