



Auckland Regional Household Labour Force Survey: Quarterly overview – March 2017

This report

This report is prepared by the Research and Evaluation unit (RIMU) of Auckland Council. It provides an overview of aspects of labour force participation in Auckland, as indicated by results of the quarterly Household Labour Force Survey (HLFS) (administered by Statistics New Zealand). Particular focus is provided on trends across age and ethnic groups in the region, and the NEET rate.

Seasonality: Data in this report is not “seasonally adjusted”. In order to ensure information is seasonally aligned, rolling annual averages are used throughout this report for reporting across time.

Definitions: A list of definitions is included at the back of this report.

Revisions: The survey and all back-data was re-based in March 2015 to match the 2013 census and incorporate regional population benchmarks. Also, the survey and all back-data since 2009 was revised in June 2016 when “searching online ads only” was redefined from “official unemployed” to “looking at job ads only” (ie not actively seeking employment, therefore Not In Labour Force). This overview uses the revised data.

The Household Labour Force Survey (HLFS)

The HLFS is a national sample survey undertaken by Statistics New Zealand. It is primarily designed for national estimates. The national sample contains about 16,000 private households and about 30,000 individuals each quarter. Households are sampled on a statistically representative basis from rural and urban areas throughout New Zealand, and information is obtained for each member of the household aged 15 or older. Each quarter, one-eighth of the households in the sample are rotated out and replaced by a new set of households.

Sampling errors: As the HLFS is a sample survey, all statistics are subject to survey sampling error. Statistics presented here at the sub-sample (e.g. local board) and sub-variable (e.g. NEET) levels are also subject to additional sampling errors and should be treated as indicative only.

Survey questionnaire changes: In June 2016, the HLFS questionnaire was changed to identify more self-employed people (who would previously have been Not In Labour Force and/or NEET), and to include members of the armed forces living in private dwellings (previously not part of “Working Age Population”). Consequently, employment and unemployment rates and other affected data from June 2016 onwards are not fully compatible with earlier periods.

The information provided in this report supplements other freely available HLFS reporting:

National and some regional data released on Statistics NZ website: www.stats.govt.nz

Technical notes on the HLFS on Statistics NZ website:

<http://www.stats.govt.nz/survey-participants/a-z-of-our-surveys/household-labour-force-survey.aspx>

and for explanation of June 2016 questionnaire changes:

http://www.stats.govt.nz/browse_for_stats/income-and-work/employment_and_unemployment/LabourMarketStatistics_HOTPJun16qtr-incl-HLFS/Commentary.aspx

Further labour market analysis is available from MBIE:

<http://www.dol.govt.nz/publications/lmr/labour-maket-analysis.asp>

Auckland Economic Quarterly provides an overview of key economic trends in Auckland:

<http://www.aucklandcouncil.govt.nz/EN/AboutCouncil/businessandecconomy/Pages/home.aspx>

Additional Auckland HLFS data is available on request from Auckland Council’s “RIMU” unit:
Contact: Ross Wilson – Analyst ✉ Ross.Wilson@aucklandcouncil.govt.nz ☎ 09 486 8561

Disclaimer - The information in this document is given in good faith and has been obtained from sources believed to be reliable and accurate at the date of preparation, but its accuracy, correctness and completeness cannot be guaranteed.

Highlights this quarter

[NOTE: The survey and all back-data were fully revised¹ in March 2015, and partially revised from March 2009 onwards in June 2016. This overview uses the revised data]

For the quarter ending March 2017:

- The overall unemployment rate was 5.0%.
- The NEET (not in employment, education or training) rate for youth aged 15-24 was 13.2%.

Over the year ending March 2017:

- The unemployment rate overall averaged 5.0 % in the year ending March 2017, a significant decrease* from 5.7% in the year ending March 2016.
- The unemployment rate among those aged 15 to 19 averaged 21.6%, similar* to 23.3% a year prior.
- The unemployment rate for females of all ages averaged 5.5%, a fall* from 6.2% a year prior, while the unemployment rate for males averaged 4.5%, a similar fall* from 5.2% a year prior. The gap between males and females (1.0%) has narrowed compared to its peak in June 2015 (2.5%), but is still statistically significant*.
- Unemployment rates among Māori (9.8%) and Pacific people (9.6%) were both similar to a year prior (10.2% and 10.7% respectively), and remained higher* than European and Asian ethnic groups.

Snapshot: Labour force status, comparison to preceding quarter and year

	Quarter end Dec. 2016 (snapshot)	Quarter end Mar. 2017 (snapshot)	Year end Mar. 2016 (annual average)	Year end Mar. 2017 (annual average)
Number employed	880.6	880.3	803.5	863.9
Number unemployed	47.0	46.6	48.4	45.6
Number not in the labour force	374.0	384.3	396.6	386.4
Number in the working age population	1301.7	1311.2	1248.5	1295.9
Labour force participation rate (%)	71.3	70.7	68.2	70.2
Unemployment rate (%)	5.1	5.0	5.7	5.0

Note: Numbers are '000s of people

*Definition of significant change is based on statistical sampling errors produced by Statistics NZ.

¹ See “Re-base” and “Revision” explanations on preceding page

Quick overview of unemployment rates among age, ethnicity and gender groups (%) (annual averages)

	Year end Mar. 2016	Year end Mar. 2017
Total	5.7	5.0
15-19 years	23.3	21.6
20-24 years	9.2	9.5
25-39 years	5.0	4.4
40-54 years	3.9	2.8
55 years +	3.1	3.0
Female	6.2	5.5
Male	5.2	4.5
European	4.1	3.6
Māori	10.2	9.8
Pacific	10.7	9.6
Asian	7.1	5.6
MELAA/Other	7.6	9.8

..S = data suppressed due to base numbers being too small or confidentialised.

Quick overview of labour force participation rates among age, ethnicity and gender groups (%) (annual averages)

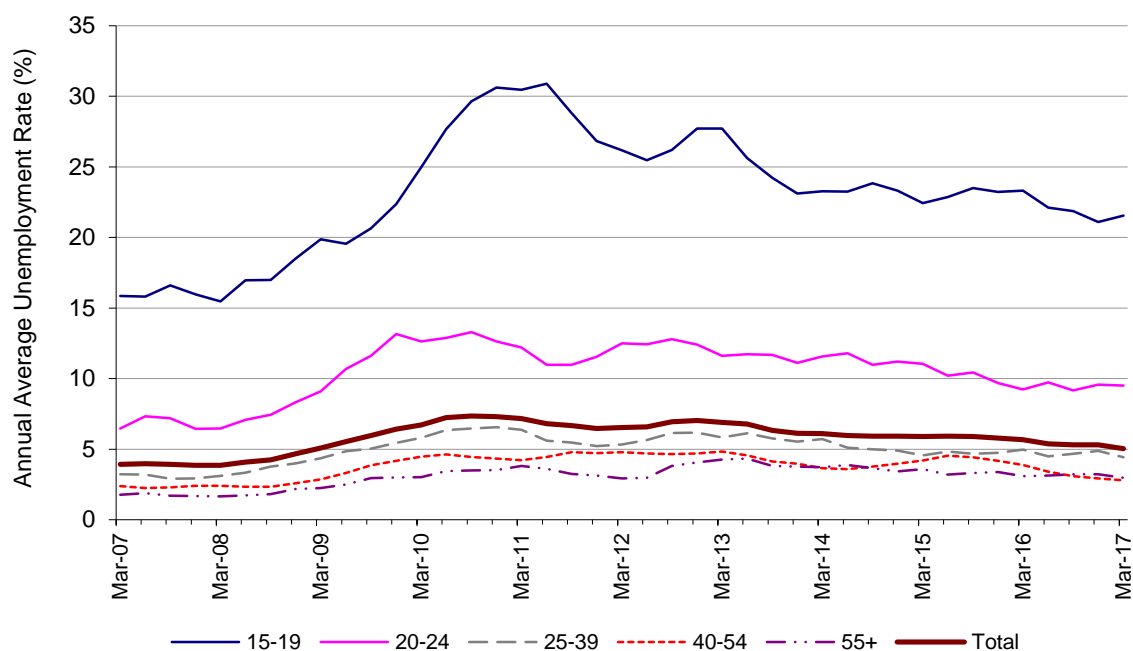
	Year end Mar. 2016	Year end Mar. 2017
Total	68.2	70.2
15-19 years	40.1	38.4
20-24 years	72.8	77.2
25-39 years	83.2	84.4
40-54 years	84.8	87.2
55 years +	47.4	49.1
Female	62.8	64.5
Male	74.0	76.2
European	71.0	72.0
Māori	63.5	67.1
Pacific	60.6	65.4
Asian	68.4	69.9
MELAA/Other	60.5	65.2

Labour force status by age, year ended March 2017 (annual averages)

	Total	15 to 19 years	20 to 24 years	25 to 39 years	40 to 54 years	55 years and over
Number employed	863.9	33.9	95.0	276.6	280.6	177.9
Number unemployed	45.6	9.3	9.9	12.8	8.1	5.5
Number not in the labour force	386.4	69.6	30.9	53.4	42.6	189.9
Number in the working age popn	1295.9	112.8	135.8	342.8	331.3	373.2
Labour force participation rate (%)	70.2	38.4	77.2	84.4	87.2	49.1
Unemployment rate (%)	5.0	21.6	9.5	4.4	2.8	3.0

Note: Numbers are '000s; totals and rates may incorporate minor sampling discrepancies.

Unemployment rate by age group (rolling annual average) to year end March 2017

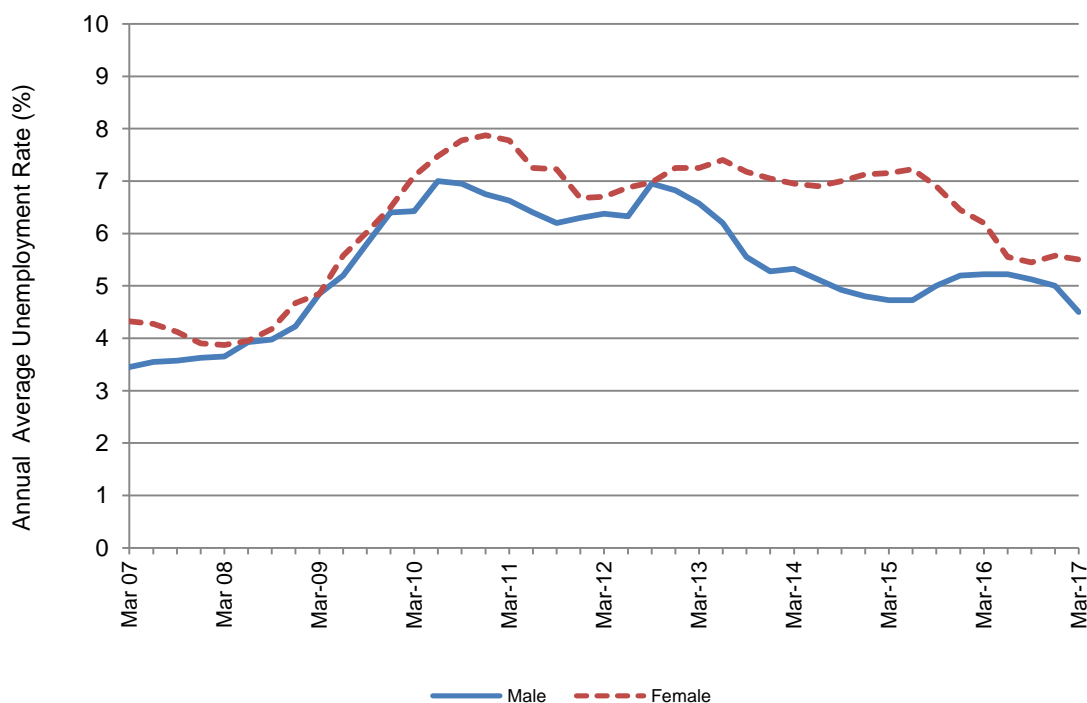


Labour force status by gender, year ended March 2017 (annual averages)

	Total	Male	Female
Number employed	863.9	457.7	406.2
Number unemployed	45.6	21.8	23.9
Number not in the labour force	386.4	149.7	236.7
Number in the working age popn	1295.9	629.2	666.7
Labour force participation rate (%)	70.2	76.2	64.5
Unemployment rate (%)	5.0	4.5	5.6

Note: Numbers are '000s; totals and rates may incorporate minor sampling discrepancies

Unemployment rate by gender (rolling annual average) to year end March 2017

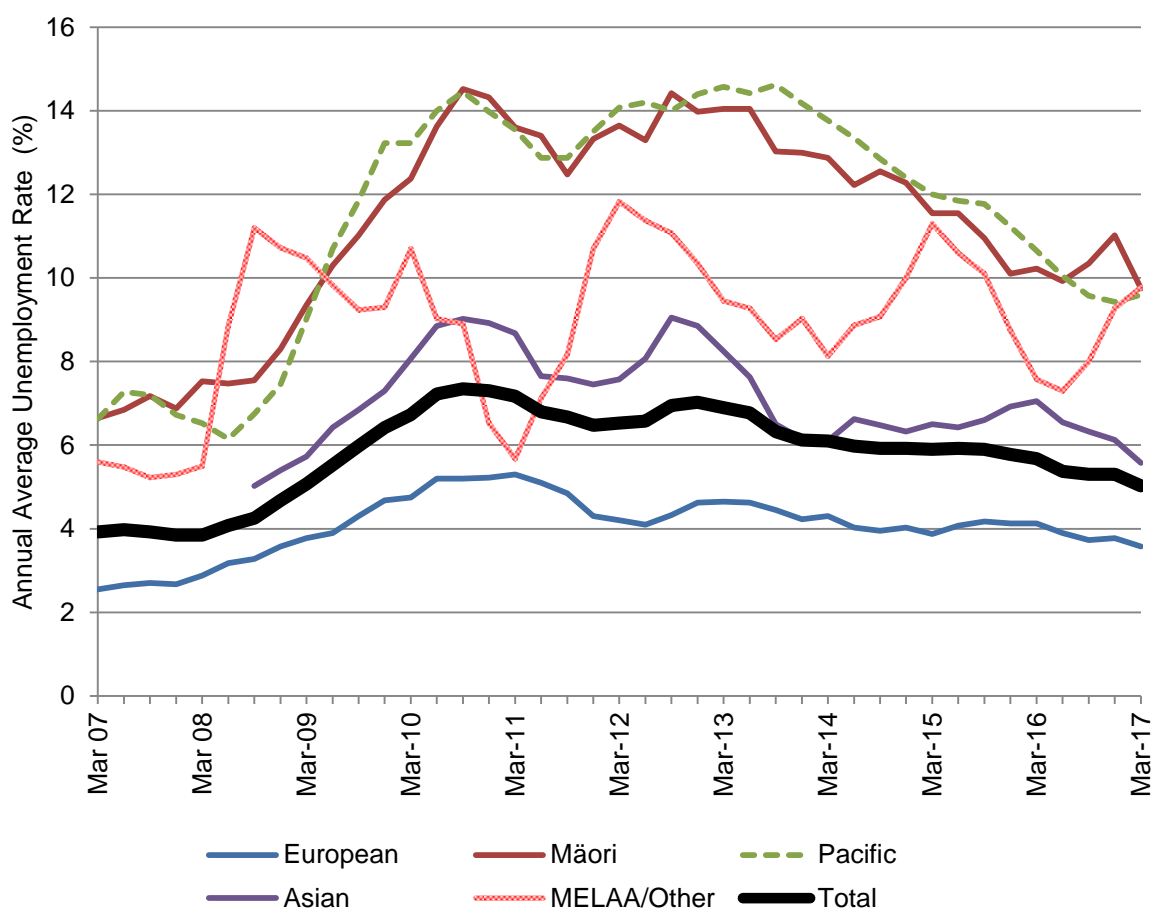


Labour force status by ethnic group, year ended March 2017 (annual averages)

	Total	European	Māori	Pacific	Asian	MELAA/Other
Number employed	863.9	539.1	67.8	92.6	207.9	16.7
Number unemployed	45.6	20.2	7.3	9.9	12.3	1.8
Number not in the labour force	386.4	217.4	36.8	54.3	94.6	9.9
Number in the working age popn	1,295.9	776.6	111.9	156.6	314.8	28.4
Labour force participation rate (%)	70.2	72.0	67.1	65.4	69.9	65.2
Unemployment rate (%)	5.0	3.6	9.8	9.6	5.6	9.8

Notes: Numbers are '000s; sums may exceed totals due to respondents selecting multiple ethnic groups
 MELAA = Middle Eastern/ Latin American/ African.
 These numbers are indicative only as sub-sample sizes are small.

Unemployment rate by ethnic group (rolling annual average) to year end March 2017



Note: Asian Ethnic Group was included in MELAA/Other until December Quarter 2007

Employment by occupation

In the March 2017 quarter, Auckland's largest occupational category was Professionals (25.7% of Auckland's total employment), followed by Managers (19.4%), Clerical and Administrative workers (12.5%) and Technicians and Trades workers (11.8%).

Between the December 2016 and March 2017 quarters, there were significant* increases in the number of people employed as:

- Labourers

In contrast, between the December 2016 and March 2017 quarters, there were significant* decreases in the number of people employed as:

- (no significant decreases)

Employment by occupation – comparison to preceding quarter (quarterly data)

Occupation (ANZSCO 1-digit)	Dec 2016 quarter	Mar 2017 quarter	Dec 2016 quarter	Mar 2017 quarter
	Number		Share (%)	
Managers	170.2	170.8	19.3	19.4
Professionals	229.8	226.0	26.1	25.7
Technicians and Trades Workers	99.8	103.6	11.3	11.8
Community and Personal Service Workers	67.6	67.7	7.7	7.7
Clerical and Administrative Workers	110.4	110.1	12.5	12.5
Sales Workers	88.3	84.7	10.0	9.6
Machinery Operators and Drivers	46.0	47.7	5.2	5.4
Labourers	47.5	61.7	5.4	7.0
Total	880.6	880.3	100.0	100.0

Notes: Numbers are '000s. Total includes not elsewhere included.

*Significance is based on statistical sampling errors produced by Statistics NZ.

Employment by industry

In the March 2017 quarter, the largest sectors in terms of employment were Other Business Services (154,200 people; 17.5% of total employment) and Wholesale and Retail (134,200 people; 15.2% of total employment).

Between the December 2016 and March 2017 quarters, there were significant* increases in the number of people employed in the following sectors:

- Manufacturing (reversing a similar decrease the previous quarter)

In contrast, between the December 2016 and March 2017 quarters there were significant* decreases in the number of people employed in the following sectors:

- Agriculture and Mining (reversing a similar increase the previous quarter)
- Education and Training

Employment by industry – comparison to preceding quarter (quarterly data)

Industry (ANZSIC06)	Dec 2016 quarter	Mar 2017 quarter	Dec 2016 quarter	Mar 2017 quarter
	Number		Share (%)	
Agriculture and Mining	11.0	8.9	1.2	1.0
Manufacturing	82.5	87.6	9.4	10.0
Utilities and Construction	91.9	93.5	10.4	10.6
Wholesale and Retail	135.0	134.2	15.3	15.2
Accommodation and Food Services	46.8	44.3	5.3	5.0
Transport, Postal and Warehousing	45.1	46.8	5.1	5.3
Information Media and Telecommunications	23.2	26.0	2.6	3.0
Financial and Insurance Services	33.6	32.8	3.8	3.7
Other Business Services	151.2	154.2	17.2	17.5
Education and Training	81.2	76.0	9.2	8.6
Health Care and Social Assistance	81.8	79.1	9.3	9.0
Other Services	87.8	87.5	10.0	9.9
Total (including not specified)	880.6	880.3	100.0	100.0

Notes: Numbers are '000s, rounded to nearest hundred.

*Significance is based on statistical sampling errors produced by Statistics NZ.

Rates of Auckland youth not in employment, education or training (NEET)

In the March 2017 quarter, the overall percentage of young people (aged 15-24) in Auckland who were not in employment, education or training (NEET) was 13.2%; this was similar to* the New Zealand average of 13.5% over the same period.

Due to small sub-sample sizes this information is not always available for several local board areas (“..S”), and Great Barrier local board area is always excluded for the same reason. Other local board NEET levels and rates have an error margin of up to 56% (eg “10%” could actually be between 4.4% and 15.6%), so are indicative only.

NEET rates by local board area – March 2017 quarter (quarterly data)

Local board area	15-24 Age Population (000)	NEET (000)	NEET rate (%)
Rodney	5.2	1.5	29.6
Hibiscus and Bays	10.9	..S	..S
Upper Harbour	10.2	..S	..S
Kaipatiki	16.0	1.2	7.4
Devonport-Takapuna	8.2	1.2	14.9
Henderson-Massey	16.0	3.4	21.3
Waitakere Ranges	7.3	..S	..S
Waiheke	..S	..S	..S
Waitemata	14.6	1.4	9.7
Whau	16.1	2.9	18.3
Albert-Eden	21.6	1.2	5.7
Puketapapa	13.1	1.3	10.0
Orakei	11.7	..S	..S
Maungakiekie-Tamaki	12.0	2.2	18.4
Howick	26.8	4.7	17.5
Mangere-Otahuhu	13.2	2.6	19.6
Otara-Papatoetoe	20.1	3.3	16.6
Manurewa	12.5	1.6	13.0
Papakura	5.2	..S	..S
Franklin	8.2	1.1	13.5
Auckland total	249.9	32.9	13.2
Southern Initiative	51.0	8.3	16.3
Rest of Auckland	198.9	24.6	12.4
Rest of New Zealand	420.9	58.0	13.8
Total New Zealand	670.8	90.8	13.5

..S = data suppressed due to base numbers being too small.

Any finer geography than “published Region” level (e.g. Auckland total) is below the design level of the survey. Estimates should be treated as indicative only and used with caution.

The Southern Initiative is made up of the Mangere-Otahuhu, Otara-Papatoetoe, Manurewa and Papakura Local Boards

*Significance is based on statistical sampling errors produced by Statistics NZ.

Definitions used in the HLFS

Labour force: Members of the working-age population who during their survey reference week were classified as 'employed' or 'unemployed'.

Labour force participation rate: The total labour force expressed as a percentage of the working-age population.

NEET rate: Calculated as the total number of youth (aged 15–24 years) who are not in employment, education or training (NEET), as a proportion of the total youth working-age population.

Unemployed: Unemployed persons are those in the working-age population who were without a paid job, available for work and had either actively sought work in the past four weeks ending with the reference week, or had a new job to start within the next four weeks.

Unemployment rate: The number of unemployed expressed as a percentage of the labour force.

Persons not in the labour force: Any person who is neither employed nor unemployed. This category includes, for example:

- retired persons
- persons with personal or family responsibilities such as child care, unpaid house work
- persons attending educational institutions
- persons permanently unable to work due to physical or mental handicaps
- persons who were not actively seeking work.