



# Auckland Regional Household Labour Force Survey: Quarterly overview - March 2015

## This report

This report is prepared by the Research and Evaluation unit (RIMU) of Auckland Council. It provides an overview of aspects of labour force participation in Auckland, as indicated by results of the quarterly Household Labour Force Survey (HLFS) (administered by Statistics New Zealand). Particular focus is provided on trends across age and ethnic groups in the region, and the NEET rate.

**Note:** In order to ensure information is seasonally aligned, rolling annual averages are used throughout this report for reporting across time.

**Definitions:** A list of definitions is included at the back of this report.

**Re-base:** The survey and all back-data was re-based in March 2015 to match the 2013 census and incorporate regional population benchmarks. This overview uses the re-based data.

## The Household Labour Force Survey (HLFS)

The HLFS is a national sample survey undertaken by Statistics New Zealand. It is primarily designed for national estimates. The national sample contains about 16,000 private households and about 30,000 individuals each quarter.

Households are sampled on a statistically representative basis from rural and urban areas throughout New Zealand, and information is obtained for each member of the household aged 15 or older. Each quarter, one-eighth of the households in the sample are rotated out and replaced by a new set of households.

### Important note about the HLFS:

As the HLFS is a sample survey, all statistics are subject to sampling error. Statistics presented here at the sub-sample and sub-variable levels should be treated as indicative only

The information provided in this report supplements other freely available HLFS reporting:

**National data** released on Statistics NZ website: [www.stats.govt.nz](http://www.stats.govt.nz)

**Technical notes** on the HLFS on Statistics NZ website:

<http://www.stats.govt.nz/survey-participants/a-z-of-our-surveys/household-labour-force-survey.aspx>

**Further information on the HLFS and labour market data** on Statistics NZ website:

[http://www.stats.govt.nz/browse\\_for\\_stats/income-and-work/employment\\_and\\_unemployment.aspx](http://www.stats.govt.nz/browse_for_stats/income-and-work/employment_and_unemployment.aspx)

**National data** released on Statistics NZ website: [www.stats.govt.nz](http://www.stats.govt.nz)

**Further labour market analysis** is available from MBIE:

<http://www.dol.govt.nz/publications/lmr/labour-market-analysis.asp>

**Auckland Economic Quarterly** provides an overview of key economic trends in Auckland:

<http://www.aucklandcouncil.govt.nz/EN/AboutCouncil/businessandecconomy/Pages/home.aspx>

**Additional Auckland HLFS data** is available on request from Auckland Council's RIMU unit:

Contact: Ross Wilson – Analyst ✉ [Ross.Wilson@aucklandcouncil.govt.nz](mailto:Ross.Wilson@aucklandcouncil.govt.nz) ☎ 09 486 8561

**Disclaimer** - The information in this document is given in good faith and has been obtained from sources believed to be reliable and accurate at the date of preparation, but its accuracy, correctness and completeness cannot be guaranteed.

## Highlights this quarter

**[NOTE: The survey and all back-data was re-based in March 2015. This overview uses the re-based data]**

At the end of the March 2015 quarter:

- The overall unemployment rate was 6.9%.
- The NEET (Not employed, in education or training) rate for youth aged 15-24 was 11.1%.

Over the year ending March 2015:

- The unemployment rate fell from an annual average of 6.8% in the year ending March 2014 to 6.3% in the year ending March 2015.
- The unemployment rate among those aged 15 to 19 was 24.2%, similar\* to 25.1% a year prior.
- Unemployment rates among Maori and Pacific people remained higher than other ethnic groups (12.0% and 12.3% respectively).

## Snapshot: Labour force status Auckland

	Quarter end December 2014 (snapshot)	Quarter end March 2015 (snapshot)	Year end December 2014 (annual average)	Year end March 2015 (annual average)
Number employed	795.4	796.9	770.1	780.0
Number unemployed	49	59.4	52.5	52.4
Number not in the labour force	368.8	365.7	374.8	374.4
Number in the working age population	1213.2	1222	1197.3	1206.7
Labour force participation rate (%)	69.6	70.1	68.7	69.0
Unemployment rate (%)	5.8	6.9	6.4	6.3

Note: Numbers are '000s of people

\*Definition of significant change is based on statistical sampling errors produced by Statistics NZ.

**Quick overview of unemployment rates among age, ethnicity and gender groups (%) (annual averages)**

	<b>Year end March 2014</b>	<b>Year end March 2015</b>
<b>Total</b>	6.8	6.3
15-19 years	25.1	24.2
20-24 years	13.4	12.0
25-39 years	6.4	4.8
40-54 years	3.9	4.4
55 years +	4.0	3.9
Female	5.9	5.0
Male	7.8	7.7
European	4.7	4.2
Maori	13.8	12.0
Pacific	14.7	12.3
Asian	7.2	7.2
MELAA/Other	9.0	12.9

..S = data suppressed due to base numbers being too small or confidentialised.

**Quick overview of labour force participation rates among age, ethnicity and gender groups (%) (annual averages)**

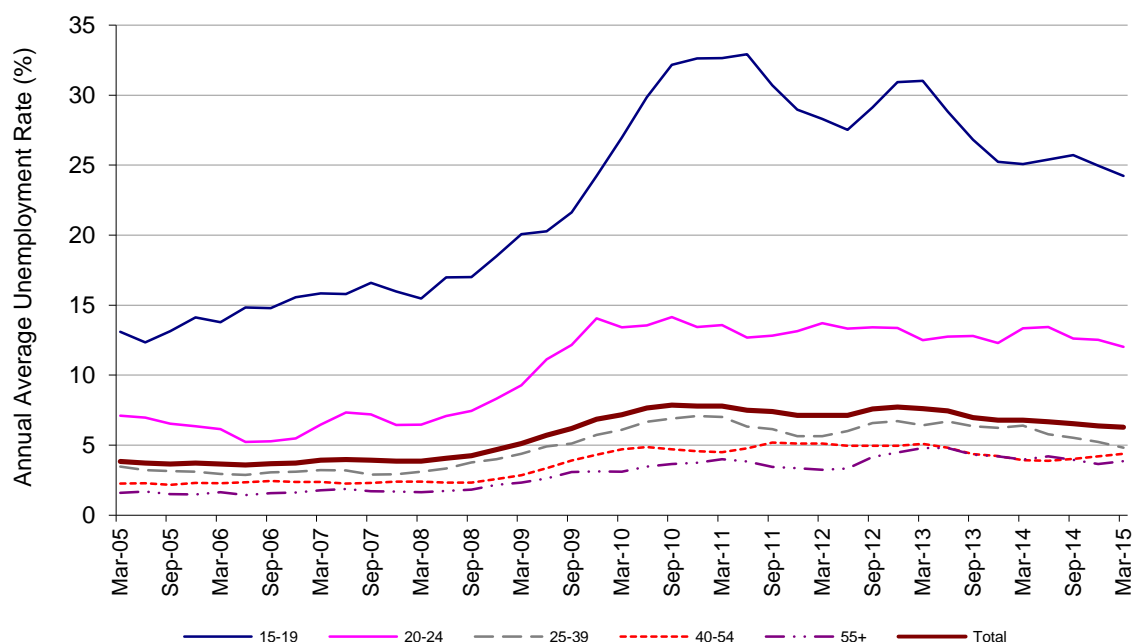
	<b>Year end March 2014</b>	<b>Year end March 2015</b>
<b>Total</b>	68.0	69.0
15-19 years	34.2	38.5
20-24 years	69.8	71.7
25-39 years	82.2	83.3
40-54 years	84.4	84.8
55 years +	48.2	48.4
Female	62.0	63.3
Male	74.6	75.1
European	71.6	72.3
Maori	64.5	66.3
Pacific	59.7	60.7
Asian	65.3	67.8
MELAA/Other	65.7	56.0

### Labour force status by age, year ended March 2015 (annual averages)

	Total	15 to 19 years	20 to 24 years	25 to 39 years	40 to 54 years	55 years and over
Number employed	780.0	31.7	83.1	259.9	253.7	151.7
Number unemployed	52.4	10.1	11.4	13.2	11.6	6.1
Number not in the labour force	374.4	66.8	37.3	54.8	47.4	168.2
Number in the working age popn	1206.7	108.6	131.8	327.8	312.7	325.9
Labour force participation rate (%)	69.0	38.5	71.7	83.3	84.8	48.4
Unemployment rate (%)	6.3	24.2	12.0	4.8	4.4	3.9

Note: Numbers are '000s

### Unemployment rate by age group (rolling annual average) to year end March 2015

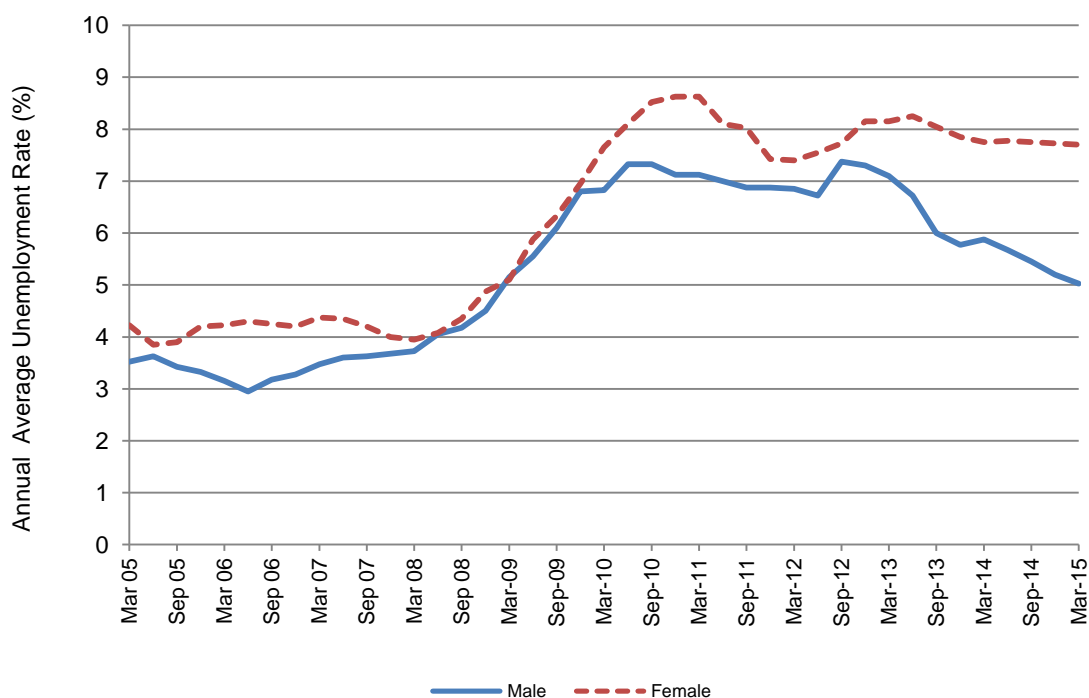


### Labour force status by gender, year ended March 2015 (annual averages)

	Total	Male	Female
Number employed	780.0	415.0	364.9
Number unemployed	52.4	22.0	30.3
Number not in the labour force	374.4	145.2	229.3
Number in the working age popn	1206.7	582.2	624.5
Labour force participation rate (%)	69.0	75.1	63.3
Unemployment rate (%)	6.3	5.0	7.7

Note: Numbers are '000s

### Unemployment rate by gender (rolling annual average) to year end March 2015

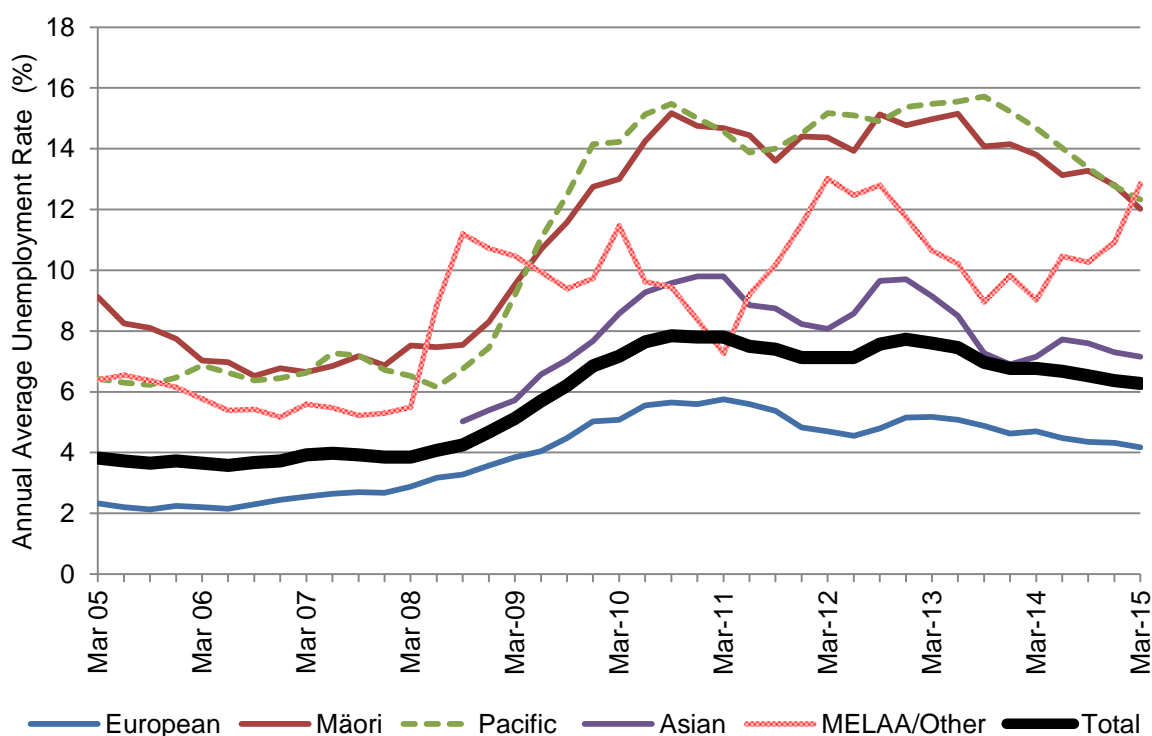


### Labour force status by ethnic group, year ended March 2015 (annual averages)

	Total	European	Maori	Pacific	Asian	MELAA/Other
Number employed	780.0	489.4	61.8	76.0	186.7	18.0
Number unemployed	52.4	21.3	8.5	10.7	14.4	2.7
Number not in the labour force	374.4	195.1	35.8	56.0	95.9	16.3
Number in the working age popn	1206.7	705.8	106.0	142.6	296.9	37.0
Labour force participation rate (%)	69.0	72.3	66.3	60.7	67.8	56.0
Unemployment rate (%)	6.3	4.2	12.0	12.3	7.2	12.9

Notes: Numbers are '000s  
 MELAA = Middle Eastern/ Latin American/ African.  
 These numbers are indicative only as sub-sample sizes are small.

### Unemployment by ethnic group (rolling annual average) to year end March 2015



Note: Asian Ethnic Group was included in MELAA/Other until December Quarter 2007

## Occupations

In the March 2015 quarter, 27.2% of those employed in Auckland were in the Professional occupational category, followed by Managers (15.4%), Clerical and Administrative workers (14.8%) and Technicians and Trades workers (11.1%).

Between the December 2014 and March 2015 quarters, there were significant\* increases in the number of people employed as:

- Clerical and Administrative Workers
- Labourers

In contrast, between the December 2014 and March 2015 quarters, there were significant\* decreases in the number of people employed as:

- [No significant decreases]

Occupation (ANZSCO 1-digit)	December 2014 quarter	March 2015 quarter	December 2014 quarter	March 2015 quarter
	Number		%	
Managers	126.5	122.6	15.9	15.4
Professionals	223.1	217.1	28.0	27.2
Technicians and Trades Workers	91.2	88.7	11.5	11.1
Community and Personal Service Workers	68.5	70.1	8.6	8.8
Clerical and Administrative Workers	111.7	118.0	14.0	14.8
Sales Workers	77.3	79.2	9.7	9.9
Machinery Operators and Drivers	43.1	43.0	5.4	5.4
Labourers	52	55.5	6.5	7.0
<b>Total</b>	<b>795.4</b>	<b>796.9</b>	<b>100.0</b>	<b>100.0</b>

Notes: Numbers are '000s. Total includes not elsewhere included.

\*Significance is based on statistical sampling errors produced by Statistics NZ.



## Industry

In the March 2015 quarter, the largest sectors in terms of employment were other business services (121,500 people; 16.1% of total employment) and wholesale and retail (119,900 people; 15.0% of total employment), followed by other services (83,800 people; 10.5% of total employment) and manufacturing (83,100 people; 10.4% of total employment). Several other sectors were close behind.

Between the December 2014 and March 2015 quarters, there were significant\* increases in the number of people employed in the following sectors:

- Other business services.

In contrast, between the December 2014 and March 2015 quarters there were significant\* decreases in the number of people employed in the following sectors:

- Other Services
- Transport, Postal and Warehousing

Industry (ANZSIC06)	December 2014 quarter	March 2015 quarter	December 2014 quarter	March 2015 quarter
	Number		%	
Agriculture and Mining	10.1	8.8	1.3	1.1
Manufacturing	87.3	83.1	11.0	10.4
Utilities and Construction	68.1	71.1	8.6	8.9
Wholesale and Retail	119.0	119.9	15.0	15.0
Accommodation and Food Services	41.9	43.0	5.3	5.4
Transport, Postal and Warehousing	40.3	37.5	5.1	4.7
Information Media and Telecommunications	24.0	24.7	3.0	3.1
Financial and Insurance Services	36.3	36.8	4.6	4.6
Other Business Services	121.5	128.4	15.3	16.1
Education and Training	73.5	74.7	9.2	9.4
Health Care and Social Assistance	82.4	81.5	10.4	10.2
Other Services	88.4	83.8	11.1	10.5
<b>Total (including not specified)</b>	<b>795.4</b>	<b>796.9</b>	<b>100.0</b>	<b>100.0</b>

Notes: Numbers are '000s, rounded to nearest hundred

\*Significance is based on statistical sampling errors produced by Statistics NZ.

## Rates of Auckland Youth Not in Employment, Education or Training (NEET)

In March 2015, the overall percentage of young people (aged 15-24) in Auckland who were not in employment, education or training (NEET) was 11.1%; this was significantly\* lower than the New Zealand average of 12.6% over the same period.

Due to small sub-sample sizes this information is not available for several local board areas.

NEET rates by local board area	15-24 Age Population (000)	NEET (000)	NEET rate (%)
Rodney	2.1	..S	..S
Hibiscus and Bays	16.0	..S	..S
Upper Harbour	10.1	..S	..S
Kaipatiki	10.4	1.2	11.9
Devonport-Takapuna	5.7	..S	..S
Henderson-Massey	18.5	2.7	14.6
Waitakere Ranges	13.2	1.1	8.3
Waiheke	..S	..S	..S
Waitemata	21.6	..S	..S
Whau	11.2	2.0	18.1
Albert-Eden	20.3	1.7	8.6
Puketapapa	10.3	2.1	20.1
Orakei	6.1	..S	..S
Maungakiekie-Tamaki	15.4	2.2	14.5
Howick	15.0	1.7	11.1
Mangere-Otahuhu	10.6	2.6	24.3
Otara-Papatoetoe	13.5	1.2	8.9
Manurewa	14.5	1.8	12.4
Papakura	6.8	1.2	17.0
Franklin	16.6	1.6	9.4
<b>Auckland total</b>	<b>238.2</b>	<b>26.4</b>	<b>11.1</b>
Southern Initiative	45.4	6.7	14.8
Rest of Auckland	192.8	19.7	10.2
Rest of New Zealand	406.7	54.7	13.4
<b>Total New Zealand</b>	<b>644.9</b>	<b>81.1</b>	<b>12.6</b>

..S = data suppressed due to base numbers being too small.

Any finer geography than "published Region" level (e.g. Auckland total) is below the design level of the survey. Estimates should be treated as indicative only and used with caution.

The Southern Initiative is made up of the Mangere-Otahuhu, Otara-Papatoetoe, Manurewa and Papakura Local Boards

\*Significance is based on statistical sampling errors produced by Statistics NZ.

## Definitions used in the HLFS

**Labour force:** Members of the working-age population who during their survey reference week were classified as 'employed' or 'unemployed'.

**Labour force participation rate:** The total labour force expressed as a percentage of the working-age population.

**NEET rate:** Calculated as the total number of youth (aged 15–24 years) who are not in education, employment, or training (NEET), as a proportion of the total youth working-age population.

**Unemployed:** Unemployed persons are those in the working-age population who were without a paid job, available for work and had either actively sought work in the past four weeks ending with the reference week, or had a new job to start within the next four weeks.

**Unemployment rate:** The number of unemployed expressed as a percentage of the labour force.

**Persons not in the labour force:** Any person who is neither employed nor unemployed. This category includes, for example:

- retired persons
- persons with personal or family responsibilities such as child care, unpaid house work
- persons attending educational institutions
- persons permanently unable to work due to physical or mental handicaps
- persons who were not actively seeking work.